

Code: MICRA

ALARM MODULE **MICRA** GSM/GPRS SATEL

Net: 91.09 EUR Gross: 112.04 EUR

The MICRA alarm module with GSM/GPRS communicator is the versatility alarm device with capability to support both traditional hardwired detectors, as well as dedicated wireless ones. The optional use of wireless motion detectors and reed switch detectors provides optimal protection against burglary, while the wireless smoke detectors can provide additional safety. Operating the system by means of remote control keyfobs, wireless keypad or mobile phone is simple and intuitive. Owing to its analog inputs, the MICRA can be also used for supervision over technical devices, providing information on exceeding the critical parameters - such as temperature or pressure. To configure a module, simply connect it to the computer with a suitable cable and run the appropriate application.



SPECIFICATION

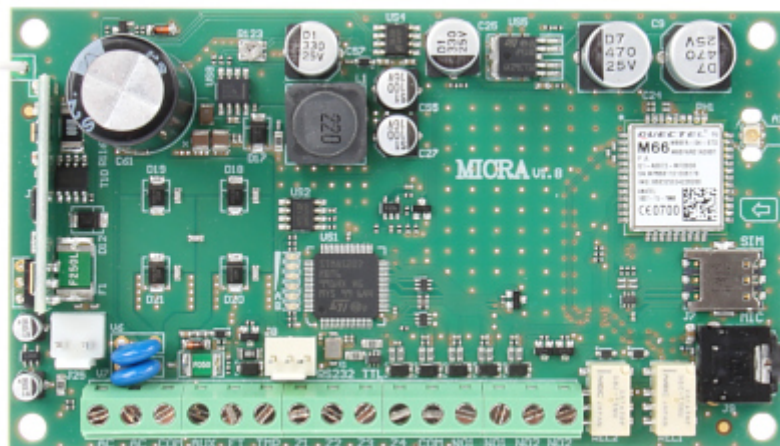
Number of hardwired inputs:	4 + 1
Number of relay outputs:	2
Number of low-current OC type outputs:	1
Number of power outputs:	1
Power supply:	18 V \pm 10%
Recommended transformer type:	TR40VA (40VA / 18VAC)
Module power supply type:	A
Total current consumption of the built-in power adapter:	2 A
Current consumption from 230V mains (standby):	50 mA
Maximal current consumption from 230V mains:	150 mA
Current consumption from battery (standby):	120 mA
Maximal current consumption from battery:	420 mA
Battery failure voltage threshold:	11 V \pm 10 %
Battery cut-off voltage:	10.5 V \pm 10 %
Battery charging current:	250 mA \pm 20 %
Output voltage range of the power adapter:	10.5 ... 13.8 V DC
Current-carrying capacity, AUX output:	500 mA

DELTA-OPTI Monika Matysiak; <https://www.delta.poznan.pl>
POL; 60-713 Poznań; Graniczna 10
e-mail: delta-opti@delta.poznan.pl; tel: +(48) 61 864 69 60

Current-carrying capacity, FT output:	50 mA
Relay contacts rating (resistive load):	1 A / 30 V DC
Number of supported remote control keyfobs:	8
Supported keyfobs types:	<ul style="list-style-type: none"> • P-2 • P-4 • T-1 • T-2 • T-4
Operating range in open area:	max. 100 m
Number of supported wireless detectors:	8
Supported wireless detectors types:	<ul style="list-style-type: none"> • MSD-300 • MPD-300 • MMD-300
Operating frequency range of the keyfobs and detectors:	433.05 ... 434.79 MHz
Type of microphone socket:	JACK 3.5 mm
Environment class:	II
Operation temp:	-10 °C ... 55 °C
Main features:	<ul style="list-style-type: none"> • inputs mode selection: digital (NO/NC) or analog (voltage measurement) • dedicate tamper loop input • GPRS/SMS monitoring • SMS/CLIP test transmission function • non-volatile memory of events • possibility of local programming via RS-232 port or remote programming via GPRS/SMS
Board dimensions:	120 x 68.5 mm
Dimensions:	266 x 286 x 100 mm
Manufacturer / Brand:	SATEL
Guarantee:	2 years

PRESENTATION

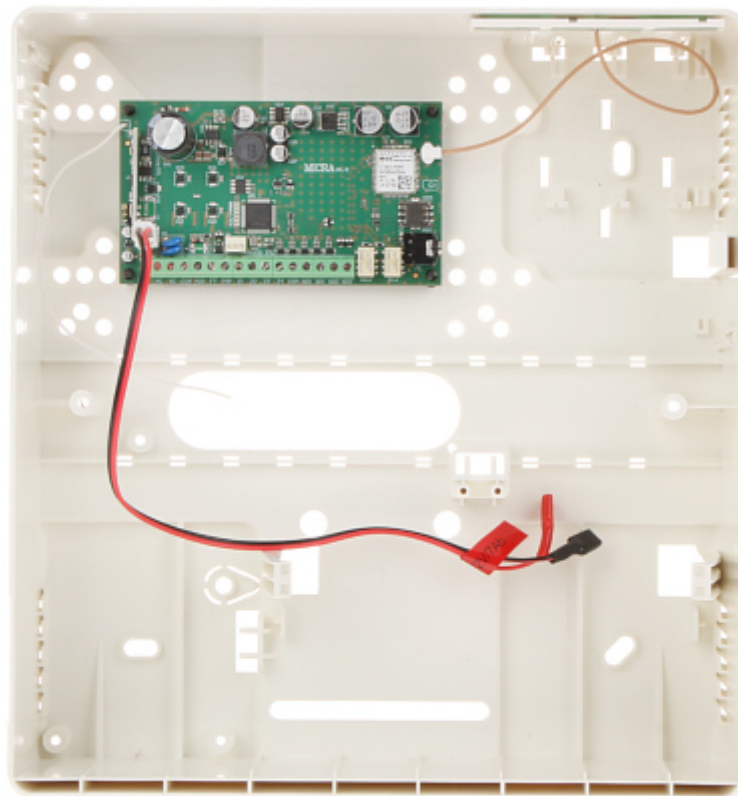
PCB:

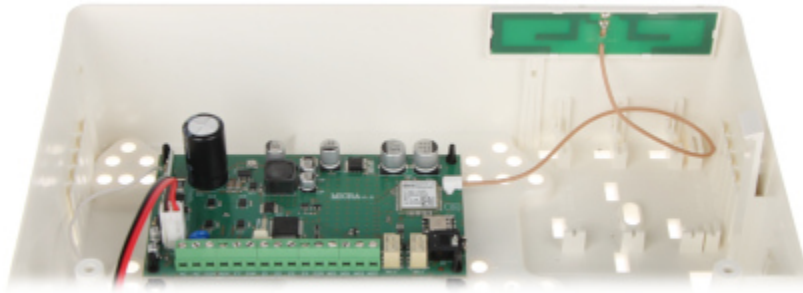


The kit includes an enclosure designed for mounting the panel module, as well as separately available battery (7Ah - 12V/7.2AH-MW) and transformer:



The module placed inside enclosure:





In the kit:

