

Code: INT-SF-B

## PARTITION KEYPAD INT-SF-B SATEL

Net: 42.87 EUR Gross: 52.73 EUR

The keypad basing on microprocessor technology is designed to alarm control panel support. The status indication is showed by LEDs and acoustic signals.



### SPECIFICATION

Support:	INTEGRA
Maximum current switched over by relay at DC 24V:	max. 2 A
Main features:	<ul style="list-style-type: none"><li>• LEDs indicating device operation state</li><li>• Backlight color - White</li><li>• Alarms: keypad hold-down PANIC, FIRE and AUX</li><li>• controls single partition in the system</li><li>• Buzzer for acoustic signaling of some system events</li><li>• access control features</li><li>• relay for electromagnetic lock/electric strike</li><li>• door control input</li><li>• Microswitch as tamper contact</li></ul>
Power supply:	12 V DC
Current consumption:	max. 40 mA
Color:	Black
Operation temp:	-10 °C ... 55 °C
Permissible relative humidity:	< 93 %
Weight:	0.18 kg
Dimensions:	143 x 80 x 25 mm
Manufacturer / Brand:	SATEL
Guarantee:	2 years

### PRESENTATION

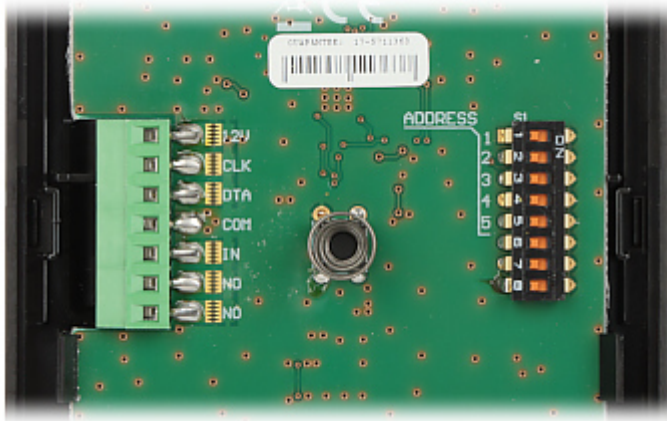
DELTA-OPTI Monika Matysiak; <https://www.delta.poznan.pl>  
POL; 60-713 Poznań; Graniczna 10  
e-mail: delta-opti@delta.poznan.pl; tel: +(48) 61 864 69 60



View with closed cover:



Internal view:



Mounting side view:



In the kit:



## PACKAGE

Dimensions (L x W x H): 0x0x0 mm	Gross Weight: 0 kg
----------------------------------	--------------------

