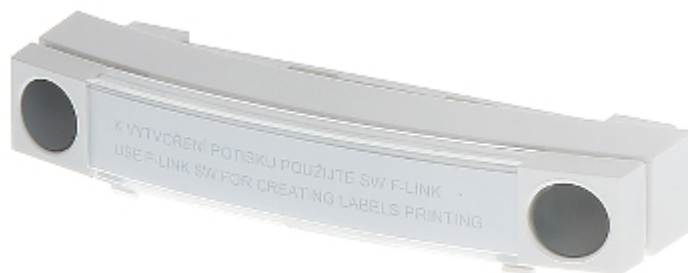


Code: JA-192E

## CONTROL MODULE **JA-192E** JABLOTRON

Price visible after login

The JA-192E is designed to sections and automation system devices control.



### SPECIFICATION

Support:	JABLOTRON 100
Application:	JA-112E, JA-113E, JA-114E, JA-152E, JA-153E, JA-154E
Power supply:	directly from the keyboard or reader
Current consumption:	0.5 mA - Standby
Operation temp:	-10 °C ... 40 °C
Weight:	0.025 kg
Dimensions:	102 x 32 x 22 mm
Manufacturer / Brand:	JABLOTRON
Guarantee:	2 years

### PRESENTATION

Rear view:



Top view:



Bottom view:

