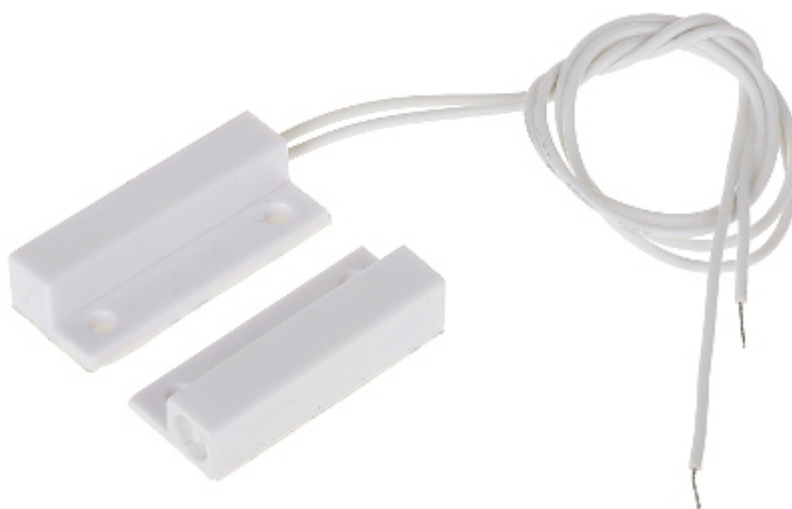


Code: KN-CA37

SIDE MAGNETIC CONTACT **KN-CA37**

Net: **0.98 USD** Gross: **1.21 USD**

The magnetic contacts can be used wherever required for controlling the status of doors, windows and/or other movable elements, e.g. for protection or monitoring of access to particular sites, spaces, facilities, in automatic control systems, etc.
The contact is designed for surface mounting.

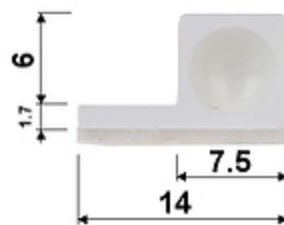


SPECIFICATION

Detection:	Opening the door or window
Maximum switching voltage of the magnetic contact:	20 V
Maximum switching current:	20 mA
Make distance:	18 mm
Break distance:	28 mm
Main features:	<ul style="list-style-type: none">• Plastic (ABS)• NC output• Length of the cable : 25 cm• Leads out the cables : On the short edge
Color:	White
Weight:	0.01 kg
Dimensions:	34.3 x 14 x 7.7 mm
Guarantee:	2 years

PRESENTATION

Dimensions:



In the kit:

