

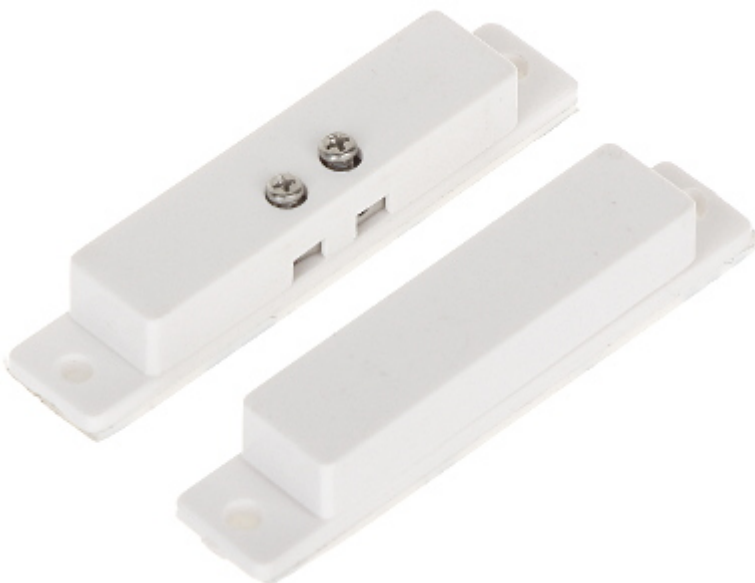
Code: KN-CA40

## SIDE MAGNETIC CONTACT **KN-CA40**

Net: **1.40 EUR** Gross: **1.72 EUR**

The magnetic contacts can be used wherever required for controlling the status of doors, windows and/or other movable elements, e.g. for protection or monitoring of access to particular sites, spaces, facilities, in automatic control systems, etc.

The contact is designed for surface mounting.



### SPECIFICATION

Detection:	Opening the door or window
Maximum switching voltage of the magnetic contact:	20 V
Maximum switching current:	20 mA
Make distance:	18 mm
Break distance:	28 mm
Main features:	<ul style="list-style-type: none"><li>• Plastic (ABS)</li><li>• NC output</li><li>• Connectors : screw terminals</li><li>• Leads out the cables : On the long edge</li></ul>
Color:	White
Weight:	0.01 kg
Dimensions:	50.7 x 9.9 x 7.4 mm - Reed switch 50.5 x 9.9 x 8.3 mm - magnet
Guarantee:	2 years

### PRESENTATION

Connectors:



Dimensions:



In the kit:

