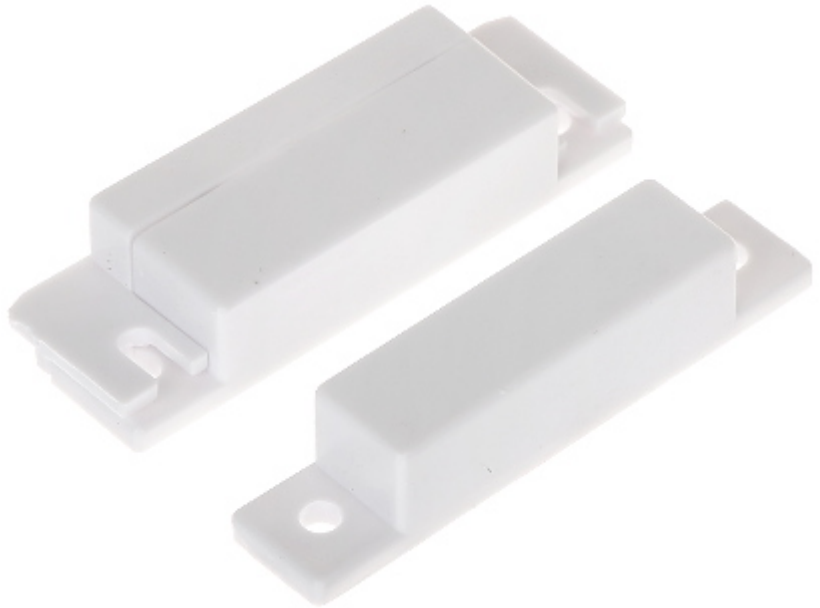


Code: KN-CA31

SIDE MAGNETIC CONTACT **KN-CA31**

Net: **1.10 EUR** Gross: **1.35 EUR**

The magnetic contacts can be used wherever required for controlling the status of doors, windows and/or other movable elements, e.g. for protection or monitoring of access to particular sites, spaces, facilities, in automatic control systems, etc.
The contact is designed for surface mounting.



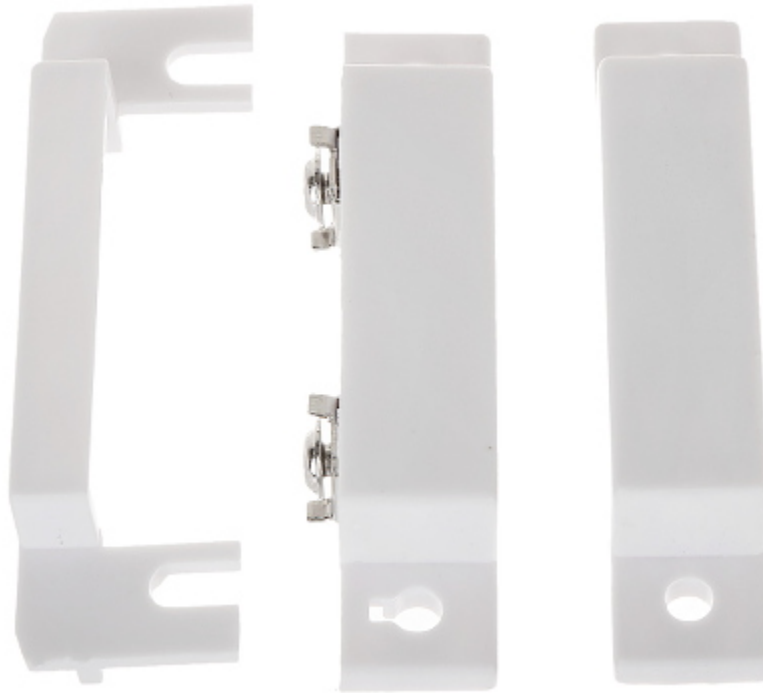
SPECIFICATION

Detection:	Opening the door or window
Maximum reed switched voltage:	20 V
Maximum switched current:	20 mA
Make distance:	18 mm
Break distance:	28 mm
Main features:	<ul style="list-style-type: none">• Plastic (ABS)• NC output - a magnet close to a reed switch - does not trigger an alarm, the contacts are closed• Connectors : screw terminals• Leads out the cables : On the long edge
Color:	White
Weight:	0.02 kg
Dimensions:	63.9 x 19.7 x 12.9 mm - Reed switch 64.2 x 13.0 x 12.9 mm - magnet
Guarantee:	2 years

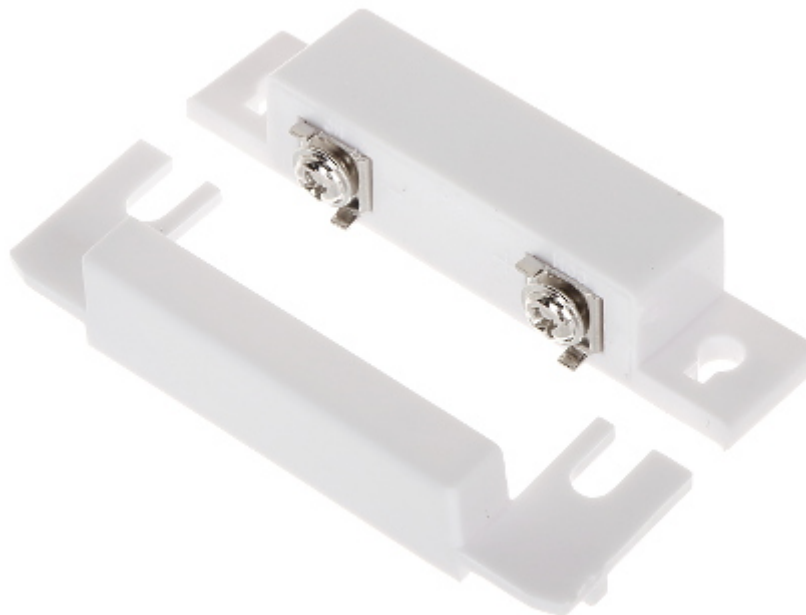
PRESENTATION

DELTA-OPTI Monika Matysiak; <https://www.delta.poznan.pl>
POL; 60-713 Poznań; Graniczna 10
e-mail: delta-opti@delta.poznan.pl; tel: +(48) 61 864 69 60

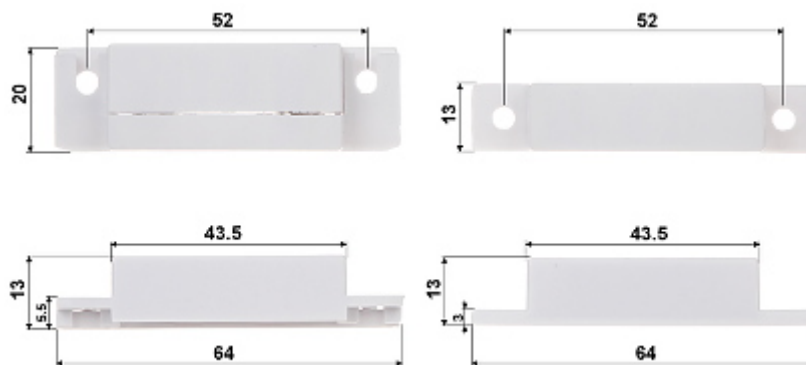
Internal view:



Connectors:



Dimensions:



In the kit:

