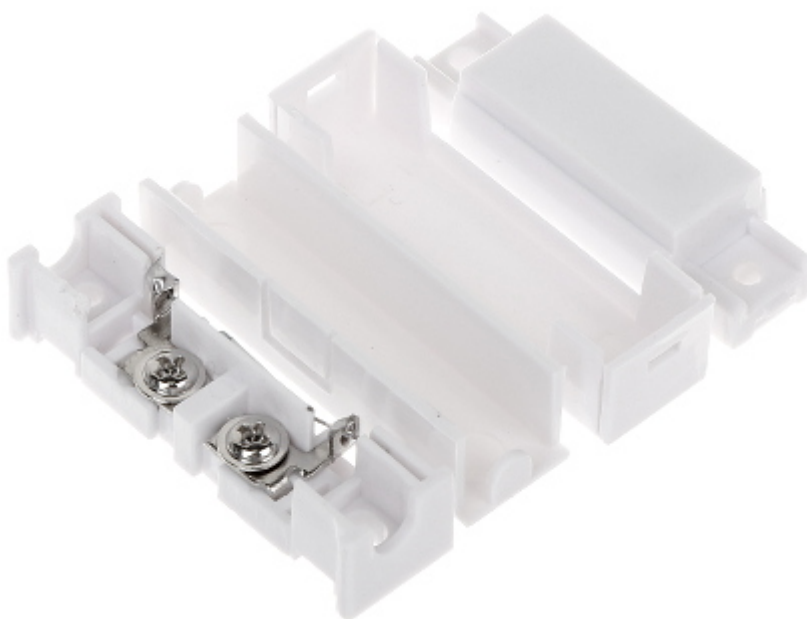


Code: KN-CA44A

SIDE MAGNETIC CONTACT **KN-CA44A**

Net: **1.06 EUR** Gross: **1.30 EUR**

The magnetic contacts can be used wherever required for controlling the status of doors, windows and/or other movable elements, e.g. for protection or monitoring of access to particular sites, spaces, facilities, in automatic control systems, etc.
The contact is designed for surface mounting.



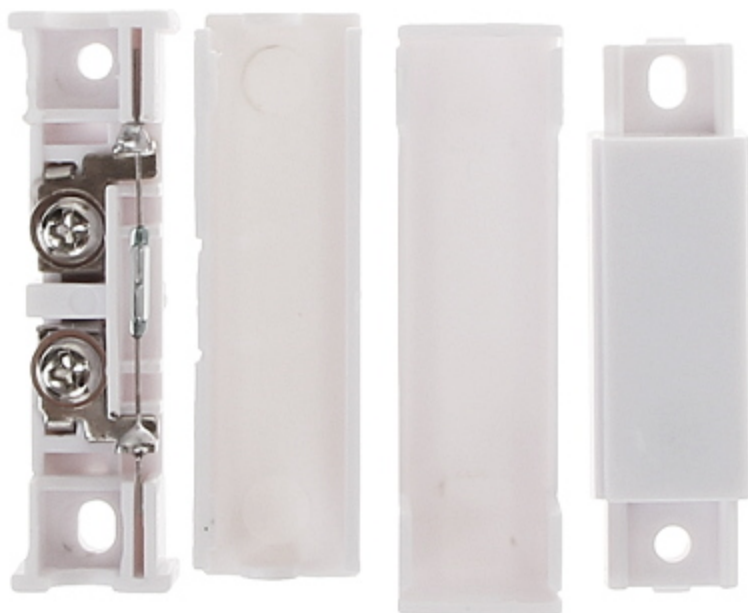
SPECIFICATION

Detection:	Opening the door or window
Maximum switching voltage of the magnetic contact:	20 V
Maximum switching current:	20 mA
Make distance:	18 mm
Break distance:	28 mm
Main features:	<ul style="list-style-type: none">• Plastic (ABS)• NC output - a magnet close to a reed switch - does not trigger an alarm, the contacts are closed• Connectors : screw terminals• Leads out the cables : On the long edge
Color:	White
Weight:	0.02 kg
Dimensions:	50.5 x 14.3 x 12.4 mm
Guarantee:	2 years

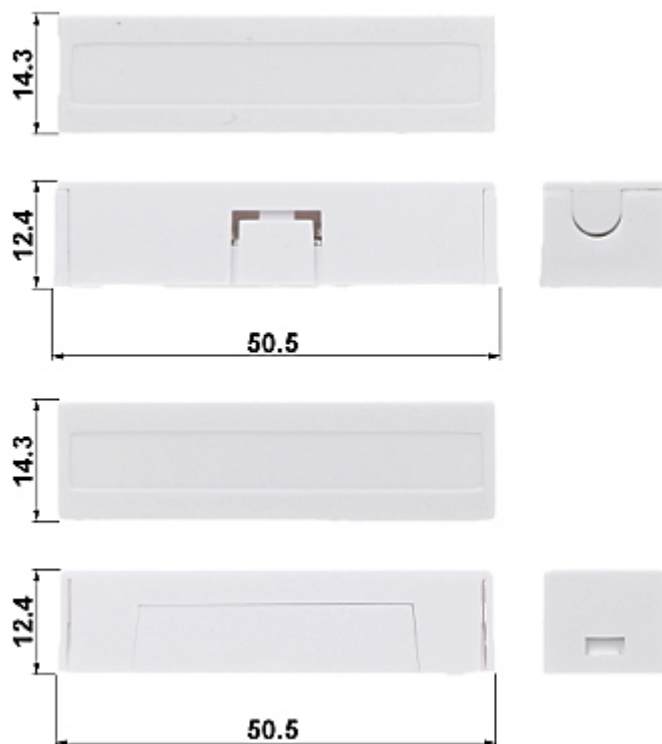
PRESENTATION

DELTA-OPTI Monika Matysiak; <https://www.delta.poznan.pl>
POL; 60-713 Poznań; Graniczna 10
e-mail: delta-opti@delta.poznan.pl; tel: +(48) 61 864 69 60

Internal view of the housing:



Dimensions:



In the kit:

