

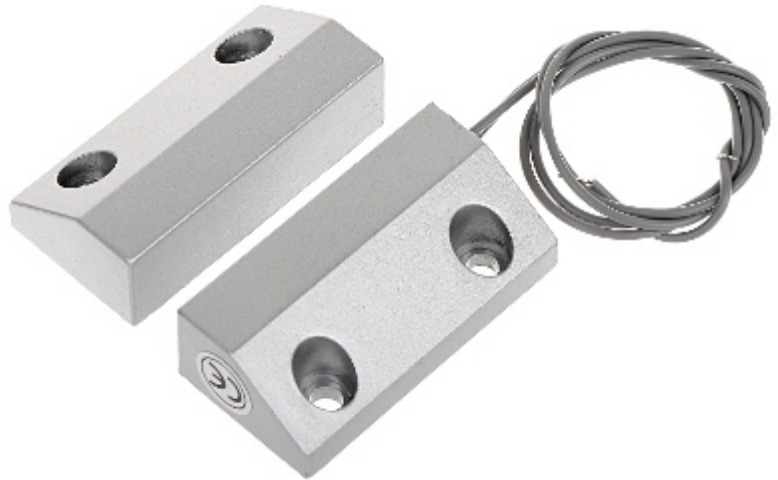
Code: KN-CA56

SIDE MAGNETIC CONTACT **KN-CA56**

Net: **3.00 USD** Gross: **3.69 USD**

The magnetic contacts can be used wherever required for controlling the status of doors, windows and/or other movable elements, e.g. for protection or monitoring of access to particular sites, spaces, facilities, in automatic control systems, etc.

The contact is designed for surface mounting.

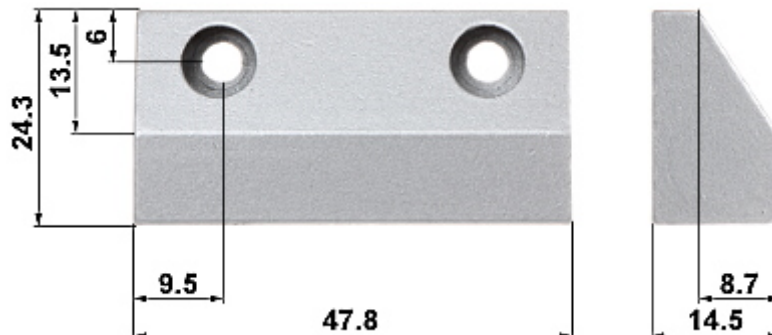


SPECIFICATION

| | |
|--|--|
| Detection: | Opening the door or window |
| Maximum switching voltage of the magnetic contact: | 20 V |
| Maximum switching current: | 20 mA |
| Make distance: | 18 mm |
| Break distance: | 28 mm |
| Main features: | <ul style="list-style-type: none">• Metal housing• NC output• Length of the cable : 25 cm• Leads out the cables : On the short edge |
| Color: | Silver |
| Weight: | 0.14 kg |
| Dimensions: | 47.8 x 24.3 x 14.5 mm |
| Guarantee: | 2 years |

PRESENTATION

Dimensions:



DELTA-OPTI Monika Matysiak; <https://www.delta.poznan.pl>
POL; 60-713 Poznań; Graniczna 10
e-mail: delta-opti@delta.poznan.pl; tel: +(48) 61 864 69 60

In the kit:

