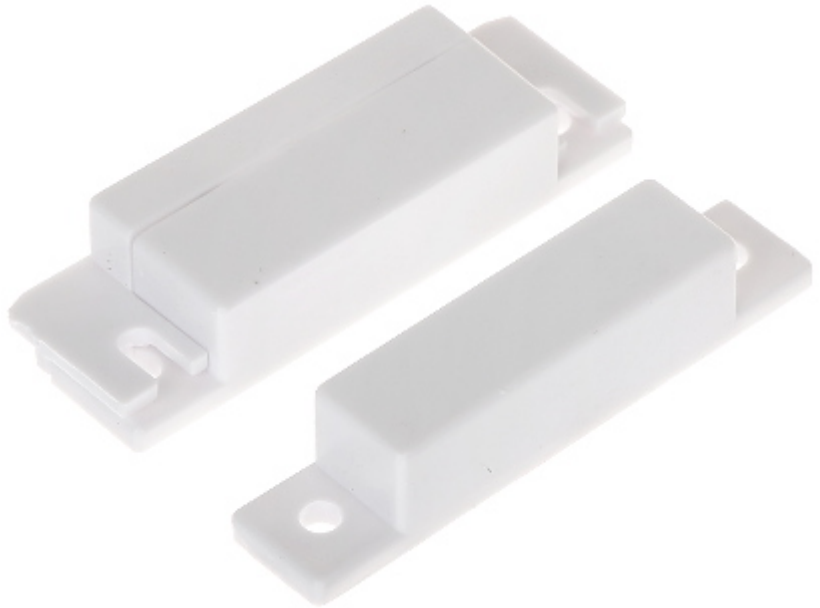


Code: KN-CA31/NO

## SIDE MAGNETIC CONTACT **KN-CA31/NO** NO OUTPUT

Net: **3.64 EUR** Gross: **4.48 EUR**

The magnetic contacts can be used wherever required for controlling the status of doors, windows and/or other movable elements, e.g. for protection or monitoring of access to particular sites, spaces, facilities, in automatic control systems, etc.  
The contact is designed for surface mounting.

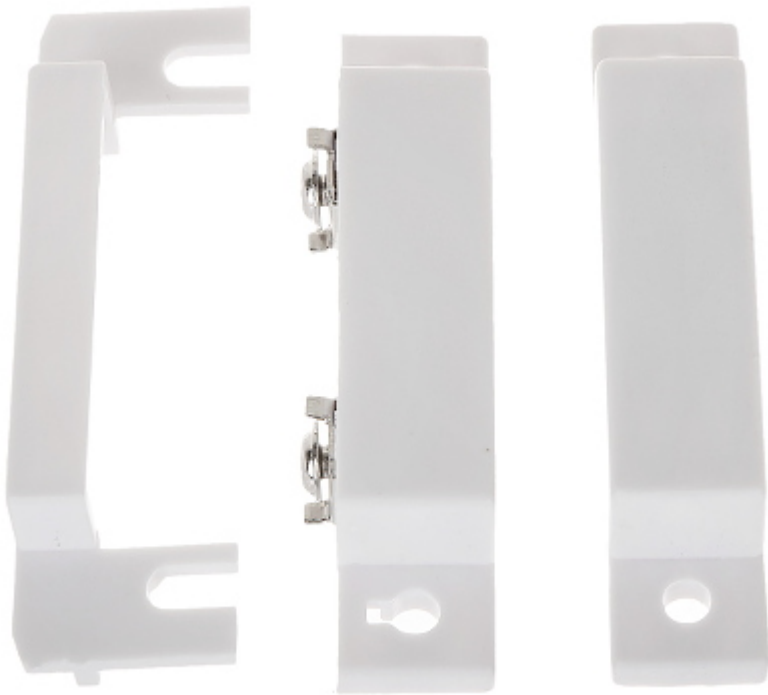


### SPECIFICATION

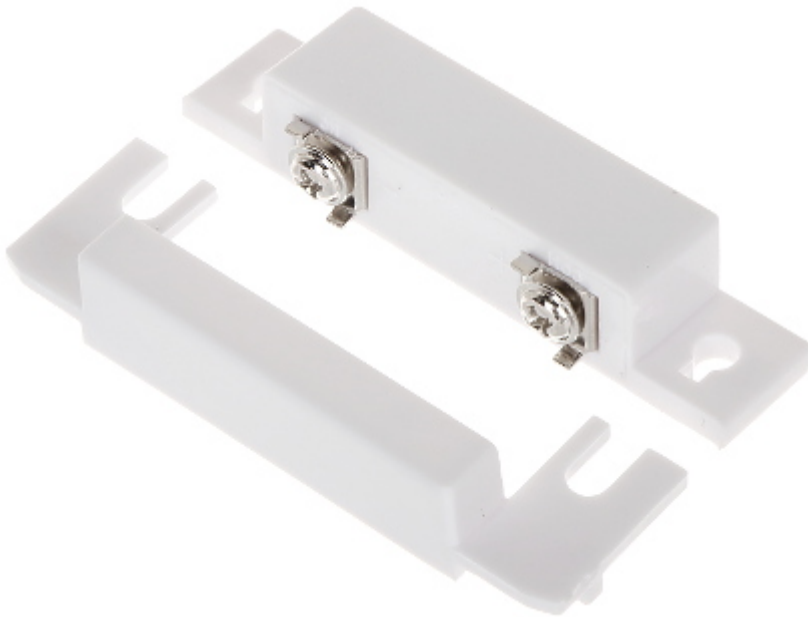
Detection:	Opening the door or window
Maximum reed switched voltage:	20 V
Maximum switched current:	20 mA
Make distance:	18 mm
Break distance:	28 mm
Main features:	<ul style="list-style-type: none"><li>• Plastic (ABS)</li><li>• NO output</li><li>• Connectors : screw terminals</li><li>• Leads out the cables : On the long edge</li></ul>
Color:	White
Weight:	0.02 kg
Dimensions:	63.9 x 19.7 x 12.9 mm - Reed switch 64.2 x 13.0 x 12.9 mm - magnet
Guarantee:	2 years

### PRESENTATION

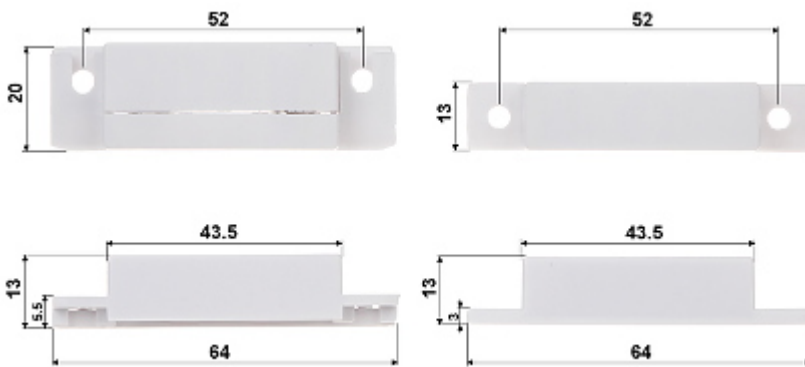
Internal view:



Connectors:



Dimensions:



In the kit:



DELTA-OPTI Monika Matysiak; <https://www.delta.poznan.pl>  
 POL; 60-713 Poznań; Graniczna 10  
 e-mail: delta-opti@delta.poznan.pl; tel: +(48) 61 864 69 60

