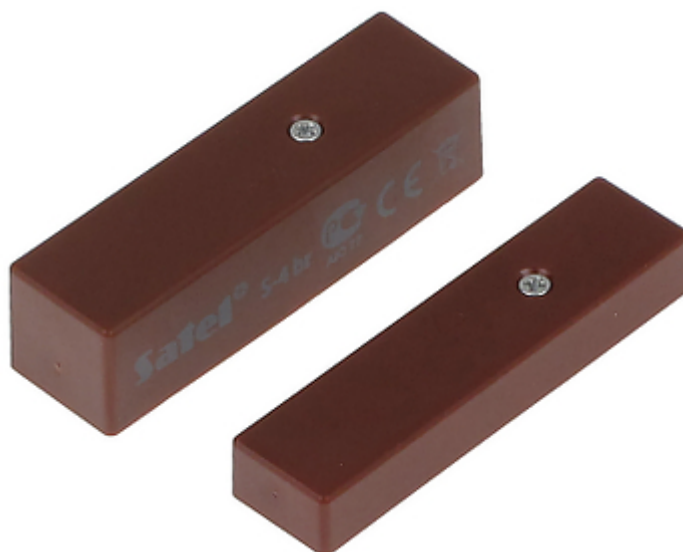


Code: S-4-BR

MAGNETIC CONTACT **S-4-BR** SATEL

Net: **8.36 EUR** Gross: **10.28 EUR**

The magnetic contacts can be used wherever required for controlling the status of doors, windows and/or other movable elements, e.g. for protection or monitoring of access to particular sites, spaces, facilities, in automatic control systems, etc.



SPECIFICATION

Detection:	Opening the door or window
Maximum reed switched voltage:	20 V
Maximum switched current:	20 mA
Make distance:	18 mm
Break distance:	28 mm
Main features:	<ul style="list-style-type: none">• Cable terminals• Tamper signaling
Color:	Brown
Weight:	0.024 kg
Dimensions:	<ul style="list-style-type: none">• Transmitter : 58.5 x 16.5 x 15.2 mm• magnet : 58.5 x 14.7 x 8.3 mm
Manufacturer / Brand:	SATEL
Guarantee:	2 years

PRESENTATION

Connectors:



DELTA-OPTI Monika Matysiak; <https://www.delta.poznan.pl>
POL; 60-713 Poznań; Graniczna 10
e-mail: delta-opti@delta.poznan.pl; tel: +(48) 61 864 69 60

In the kit:

