

Code: KN-04-BR

## SIDE MAGNETIC CONTACT **KN-04-BR**

Net: **1.27 EUR** Gross: **1.56 EUR**

The magnetic contacts can be used wherever required for controlling the status of doors, windows and/or other movable elements, e.g. for protection or monitoring of access to particular sites, spaces, facilities, in automatic control systems, etc.

The contact is designed for surface mounting.



### SPECIFICATION

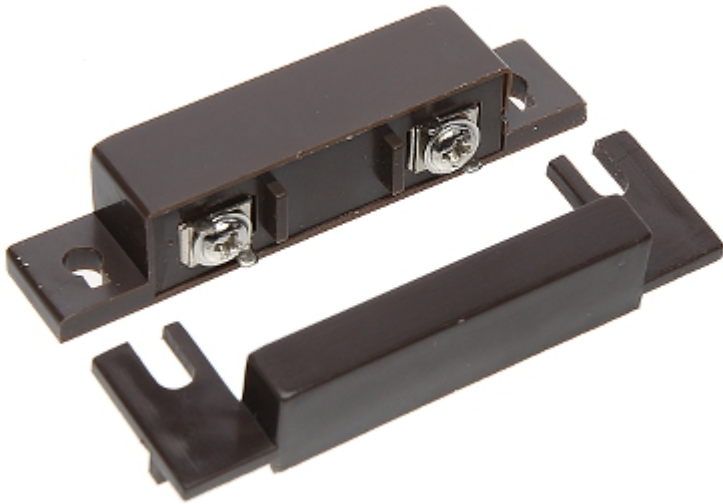
Detection:	Opening the door or window
Maximum reed switched voltage:	20 V
Maximum switched current:	20 mA
Make distance:	29 mm
Break distance:	30 mm
Main features:	<ul style="list-style-type: none"><li>• Plastic (ABS)</li><li>• NC output - a magnet close to a reed switch - does not trigger an alarm, the contacts are closed</li></ul>
Color:	Brown
Weight:	0.02 kg
Dimensions:	<ul style="list-style-type: none"><li>• 64 x 13 x 13 mm</li><li>• 64 x 19.5 x 13 mm</li></ul>
Guarantee:	2 years

### PRESENTATION

Dimensions:



DELTA-OPTI Monika Matysiak; <https://www.delta.poznan.pl>  
POL; 60-713 Poznań; Graniczna 10  
e-mail: [delta-opti@delta.poznan.pl](mailto:delta-opti@delta.poznan.pl); tel: +(48) 61 864 69 60



In the kit:

