

Code: INT-TSH-SSW

GRAPHIC KEYPAD FOR ALARM CONTROL PANEL **INT-TSH-SSW** SATEL

Net: **890.00 PLN** Gross: **1 094.70 PLN**

The INT-TSH-SSW sensoric keypad does not only stand for attractive design, but also for simplification for the daily operation of advanced alarm systems and home automation using the functionalities of the INTEGRA, INTEGRA Plus, VERSA, VERSA Plus control units.

With the MAKRO functions, a whole sequence of actions can be performed through a single command.



SPECIFICATION

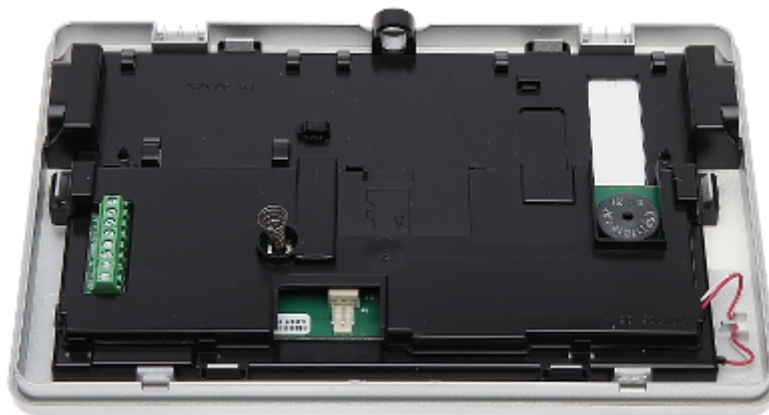
Support:	INTEGRA, INTEGRA Plus, VERSA, VERSA Plus
Main features:	<ul style="list-style-type: none">• Large, easily readable LCD with backlight displaying detailed information on system state• 2 Inputs - INTEGRA, INTEGRA Plus only• 7 " capacitive touch screen• MAKRO features that activates sequence of actions with a single key• easy operation of the multi-zone systems• Alarms: keypad hold-down PANIC, FIRE and AUX• Buzzer for acoustic signaling of some system events• Panel communication loss indication• Microswitch as tamper contact• Memory card slot - microSD
Power supply:	12 V DC
Current consumption:	max. 550 mA
Color:	Silver
Operation temp:	-10 °C ... 55 °C
Weight:	0.400 kg
Dimensions:	196 x 129 x 22 mm
Manufacturer / Brand:	SATEL
Guarantee:	2 years

PRESENTATION

DELTA-OPTI Monika Matysiak; <https://www.delta.poznan.pl>
POL; 60-713 Poznań; Graniczna 10
e-mail: delta-opti@delta.poznan.pl; tel: +(48) 61 864 69 60



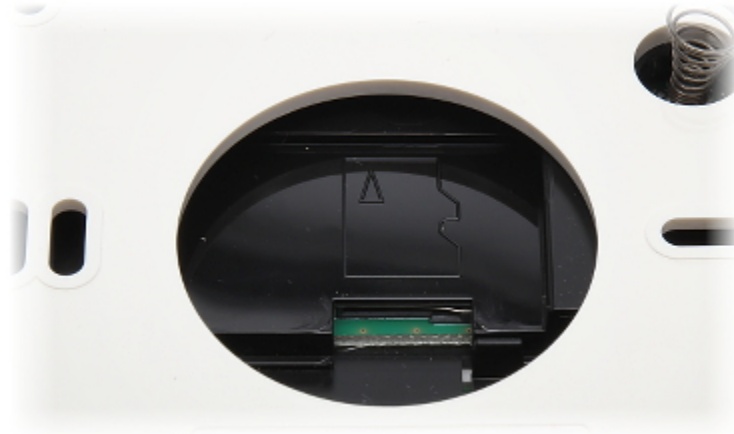
View after remove the cover:



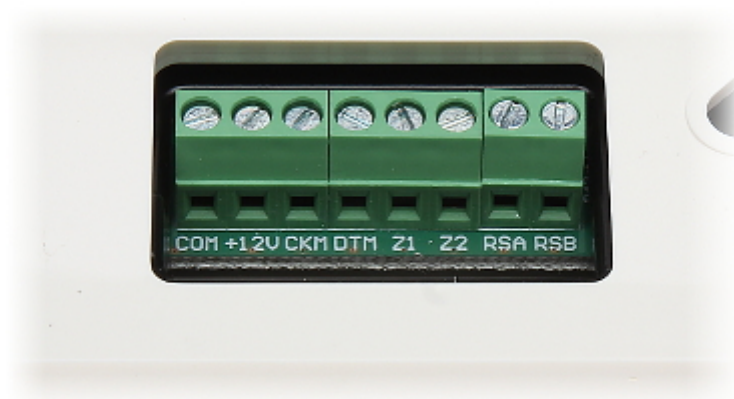
Mounting side view:



Memory card slot:



Keyboard connectors:



In the kit:

