

Code: TM-50/B

GRAPHIC KEYPAD FOR ALARM CONTROL PANEL **TM-50/B** PARADOX

Net: **131.37 EUR** Gross: **161.59 EUR**

The TM-50/B touch keypad does not only stand for attractive design, but also for simplification for the daily operation of advanced alarm systems and home automation using the functionalities of the PARADOX: Digiplex EVO, Spectra, Magellan control units.

Simple and intuitive menu makes the system operations simple and obvious. Floor plans displaying function allows to immediate localization of the violated detector. The Synoptic Table mode enables viewing the status of all partitions and lines on one screen. A complement of the alarm system functions is a possibility to display indoor and outdoor temperatures (extra sensor needed). In screen saving mode a touchscreen can be used as "photo frame" displaying the images saved on MicroSD card.



SPECIFICATION

Support:	PARADOX: SPECTRA SP/MAGELLAN MG V4.72+, EVO V2.16+
Main features:	<ul style="list-style-type: none">• Easily readable LCD with backlight displaying detailed information on system state• 5 " capacitive touch screen - 16 bit / 480 x 272 px,• 1 Input - The ability to connect 1 alarm zone / Temperature sensor• OSD menu full in Polish• Assign to one or more partitions• Alarms: keypad hold-down PANIC, FIRE and AUX• Independently set chime zones• Buzzer for acoustic signaling of some system events• SpotOn Locator - floor plans function,• One Screen Monitoring - synaptic table function,• Connects to 4-wire communication bus• Possibility to control 8 PGM outputs• Temperature sensor,• The microSD cards support - floor plans and images loading (not included),• Digital photo frame mode
Power supply:	9 V ... 16 V DC
Current consumption:	max. 200 mA
Color:	Black
Permissible relative humidity:	5 % ... 90 %
Weight:	0.184 kg
Dimensions:	144 x 96 x 15 mm
Country of origin:	Canada
Manufacturer / Brand:	PARADOX
Guarantee:	2 years

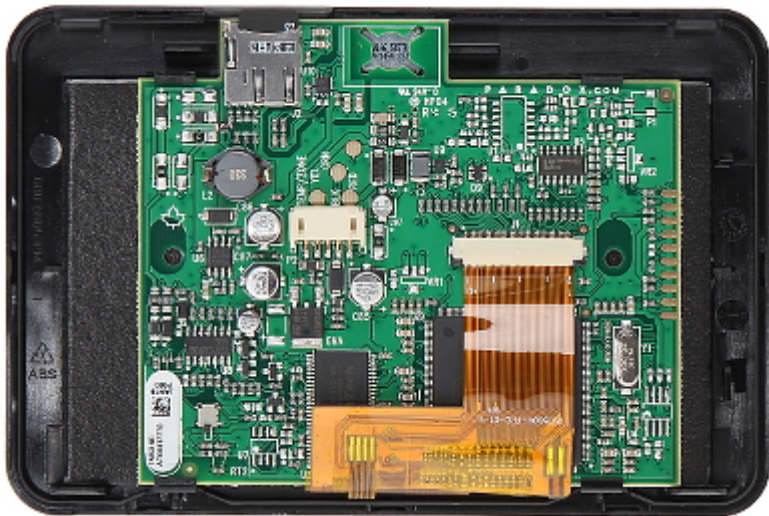
PRESENTATION

Front panel:

DELTA-OPTI Monika Matysiak; <https://www.delta.poznan.pl>
POL; 60-713 Poznań; Graniczna 10
e-mail: delta-opti@delta.poznan.pl; tel: +(48) 61 864 69 60



View after remove the cover:



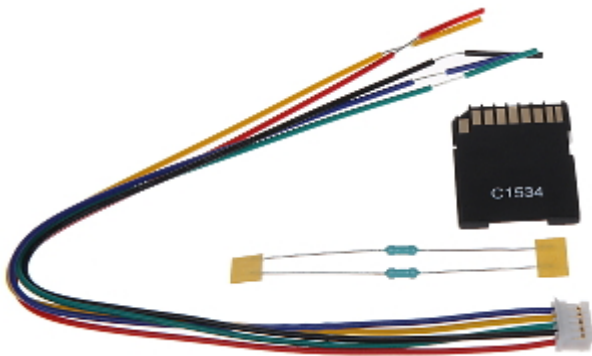
Memory card slot:



Mounting side view:



In the kit:



PACKAGE

Dimensions (L x W x H): 0x0x0 mm	Gross Weight: 0 kg
----------------------------------	--------------------