

Code: ART-200

WIRELESS RADIATOR THERMOSTAT **ART-200** ABAX2 SATEL

Net: **59.15 EUR** Gross: **59.15 EUR**

The ART-200 device is used to regulate the temperature in closed rooms, which allows you to reduce energy consumption. The radiator thermostat enables remote and manual control of the radiator valve.

The ART-200 thermostat is designed to work as part of the ABAX 2 two-way wireless system and is supported by the ACU-200, ACU-280 controllers with firmware version 6.06 or newer, and the ARU-200 repeater. The thermostat can be mounted on radiator valves with M30x1.5 mm threaded connection. An adapter is supplied with the thermostat, which also allows mounting on a Danfoss RA valve.

Comfort and economic temperature settings can be changed with buttons on the thermostat, using keypads (e.g. INT-TSI touchscreen) or from the INTEGRA CONTROL mobile application.



SPECIFICATION

Support:	ABAX2
Frequency band:	868 MHz ... 868.6 MHz
Radio communication range (at open area):	≤ 1000 m
Battery:	2 x LR6 (AA) - 1.5 V (not included)
Backup time:	~ 2 years
Current consumption:	<ul style="list-style-type: none">• 98 µA (Standby mode)• max. 80 mA

Main features:	<ul style="list-style-type: none"> • Operation modes : <ul style="list-style-type: none"> - comfortable temperature - economy temperature - manual setting of valve position / temperature • The temperature can be adjusted within the range : 5 °C ... 30 °C • Remote configuration • View device status • Selection of the temperature sensor to be used - built-in or external (ABAX 2 system) • Boost Heat - quick heating function • Valve descaling function • Open window detection • Child Lock - securing the device against children • Built-in LCD display • Battery charge indicator • battery diagnostics • Bi-directional encrypted radio communication - AES • Transmission channel diversity - automatic selection of the one of 4 channels that will enable transmission without interference with other signals in the 868 MHz frequency band • Remote update of software • The "ECO" option allows to extend the battery life up to four times (only in ABAX2) • Installation on valves : M30 x 1.5 mm • In the kit : <ul style="list-style-type: none"> - Danfoss RA Adapter - positioning ring for easy mounting on smaller diameter valves
Operation temp:	-10 °C ... 50 °C
Color:	White
Weight:	0.12 kg
Dimensions:	55 x 102 x 61 mm
Manufacturer / Brand:	SATEL
Guarantee:	2 years

PRESENTATION



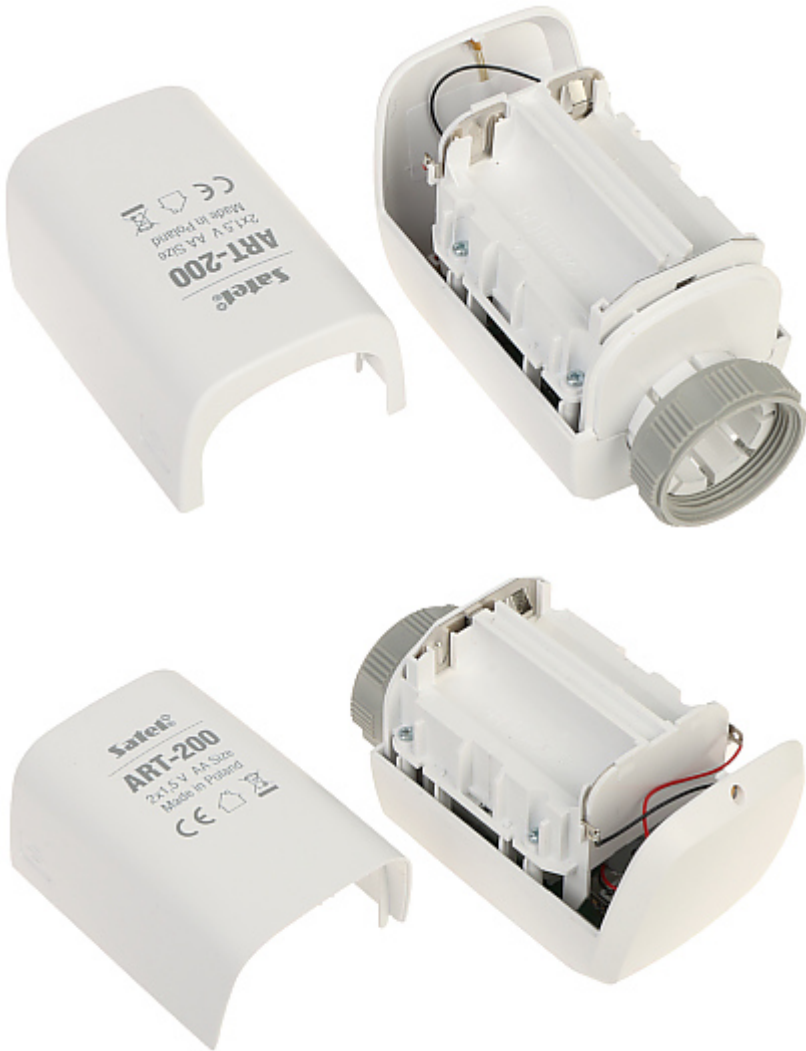
Top view:



Mounting side view:



Place for batteries 2 x 1.5V AA:



In the kit:



PACKAGE

Dimensions (L x W x H): 0x0x0 mm	Gross Weight: 0 kg
----------------------------------	--------------------