

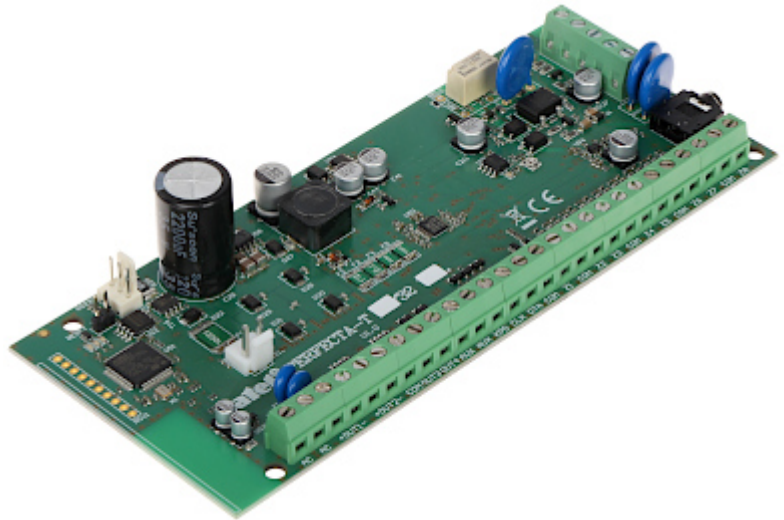
Code: PERFECTA-T-32

## ALARM CONTROL PANEL **PERFECTA-T-32** SATEL

Net: **310.00 PLN** Gross: **381.30 PLN**

The alarm control panels of PERFECTA-T series are intended for security of small and medium-sizes facilities, such as flats, single-family houses, segments in terraced houses, offices, small companies, etc. They provide protection in accordance with the requirements of Grade 2 EN 50131.

The built-in PSTN telephone dialer can be used to monitor events (eg to the security agency monitoring station) and voice messaging as well as audio verification (listening to the sounds from the protected object).



### SPECIFICATION

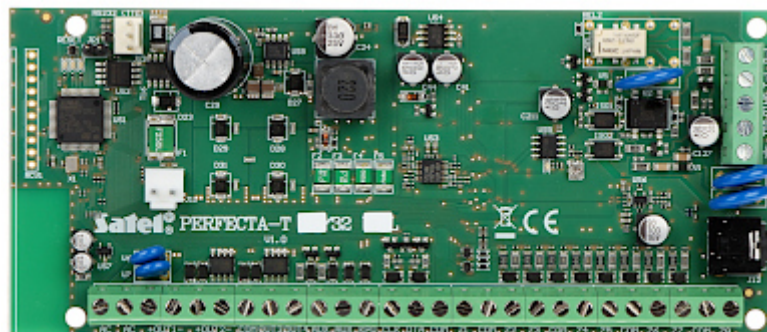
Mainboard inputs:	8 pcs - programmable
Mainboard outputs:	4 pcs - programmable
Maximal number of supported inputs:	32 pcs - programmable
Maximal number of supported outputs:	12 pcs - programmable
Maximal load:	2 A
Users + admins:	15 + 1
Partitions:	—
Zones:	2
Expansion modules:	✓
Events memory:	3584
Timers:	8
Supported keypads:	max. 4 pcs
Supporting the wireless ABAX system via bus:	—
Keyboard included:	—
Enclosure included:	—
Protection class (Grade):	2
Main features:	<ul style="list-style-type: none"> <li>• Built-in telephone dialer</li> <li>• Built-in voice module (playing voice messages on the need for telephone messaging) - 16 voice messages</li> <li>• Built-in module of alarm acoustic verification (listening the sounds)</li> <li>• 3 arming modes for each zone</li> <li>• The ability to assign the input to the two zones</li> <li>• Controlled by the user or by using timers</li> <li>• Communication bus for connecting the keypads (PRF-LCD) and extension modules (INT-E, INT-O, INT-ORS)</li> <li>• Edition of the names (users, zones, inputs, outputs and modules) for easy control of the system and its monitoring</li> <li>• Built-in advanced power adapter with extended diagnostics - 2 power outputs</li> <li>• Vibration detectors and rollerblinds detectors support</li> <li>• The ability to firmware upgrade</li> </ul>

DELTA-OPTI Monika Matysiak; <https://www.delta.poznan.pl>  
 POL; 60-713 Poznań; Graniczna 10  
 e-mail: [delta-opti@delta.poznan.pl](mailto:delta-opti@delta.poznan.pl); tel: +(48) 61 864 69 60

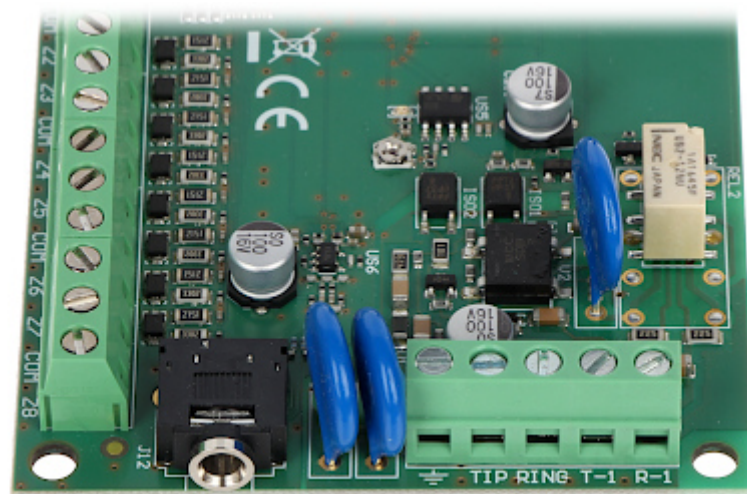
Power supply:	18 V AC
Operation temp:	-10 °C ... 55 °C
Permissible relative humidity:	93 %
Dimensions:	160 x 68 mm
Weight:	0.1 kg
Supported languages:	Polish
Manufacturer / Brand:	SATEL
Guarantee:	2 years

## PRESENTATION

Control panel mainboard:



Connectors:



In the kit:

