

Code: INTEGRA-128

ALARM CONTROL PANEL **INTEGRA-128** SATEL

Net: **635.00 PLN** Gross: **781.05 PLN**

Advanced alarm control unit providing alarm functions and optional implementation of home automation and access control systems. With a broad range of extension modules, its applications can be adapted to individual needs - from minor systems to extensive installations.

A major advantage of the INTEGRA control units are their communication features combined with additional modules - GSM and TCP/IP.

System operation is possible with LCD keypads, partition keypads, keyfobs and proximity cards or remotely with PC or mobile phone. Flash firmware upgrade with a PC.



SPECIFICATION

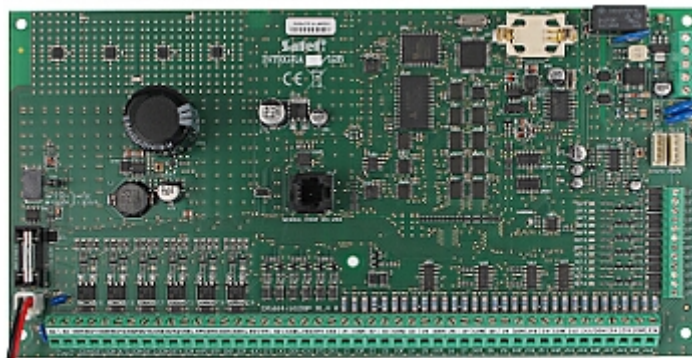
Mainboard inputs:	16 pcs
Mainboard outputs:	16 pcs
Maximal number of supported inputs:	128 pcs
Maximal number of supported outputs:	128 pcs
Current-carrying capacity, low-current programmable outputs:	50 mA
Current-carrying capacity, high-current programmable outputs (+/-10%):	3 A - 4 pcs
Maximal load:	3 A
Users + admins:	240 + 8
Partitions:	8
Zones:	32
Expansion modules:	max. 64
Events memory:	22527
Timers:	64
Supported keypads:	max. 8 pcs
Supporting the wireless ABAX system via bus:	✓
Keyboard included:	—
Enclosure included:	—
Protection class (Grade):	2
Main features:	<ul style="list-style-type: none">• Access control and home automation functions• Great opportunities for communication in connection with additional GSM, TCP/IP modules
Power supply:	20 V AC / 337 mA
Operation temp:	-10 °C ... 55 °C
Permissible relative humidity:	93 %

DELTA-OPTI Monika Matysiak; <https://www.delta.poznan.pl>
POL; 60-713 Poznań; Graniczna 10
e-mail: delta-opti@delta.poznan.pl; tel: +(48) 61 864 69 60

Weight:	0.26 kg
Dimensions:	264 x 134 mm
Supported languages:	Polish
Manufacturer / Brand:	SATEL
Guarantee:	2 years

PRESENTATION

Control panel mainboard:



In the kit:

