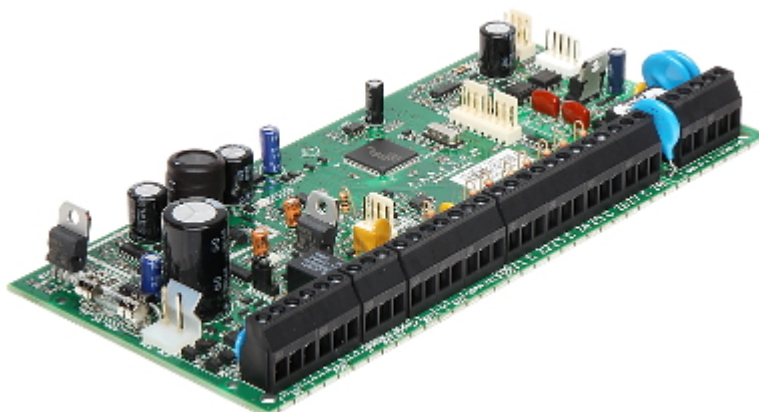


Code: SP-6000-R4

ALARM CONTROL PANEL **SP-6000-R4** PARADOX

Net: **70.91 EUR** Gross: **87.22 EUR**

The SP-6000-R4 control panel offers advanced solutions and communication via BUS, allowing to create module alarm system. With the communication bus the control panel can be expanded through a series of modules, both wired and wireless.
Flash firmware upgrade with a PC.



SPECIFICATION

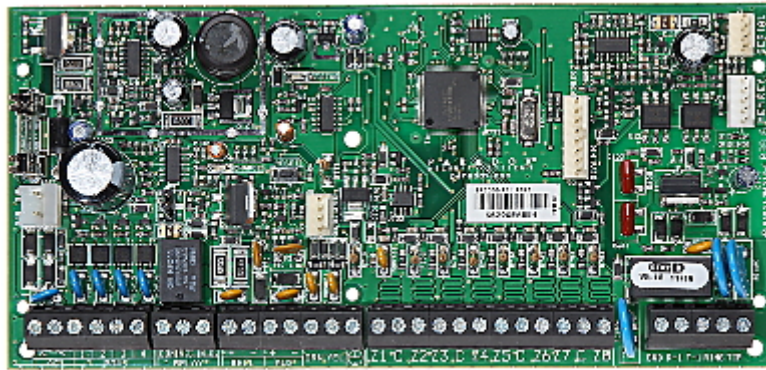
Mainboard inputs:	8 pcs
Mainboard outputs:	2 pcs - programmable + 1 pcs Relay
Maximal number of supported inputs:	16 pcs - ATZ function
Maximal number of supported outputs:	16 pcs
Current-carrying capacity, low-current programmable outputs:	100 mA
Maximal load:	1.5 A
Users + admins:	32 + 1
Partitions:	2
Zones:	4
Expansion modules:	24 (3 x ZX8)
Events memory:	256
Timers:	16
Supported keypads:	max. 15 pcs
Keyboard included:	—
Enclosure included:	—
Protection class (Grade):	2
Main features:	<ul style="list-style-type: none">• Support StayD function• The number of telephone numbers to notify: 5 - private numbers, 3 - monitoring stations, 1 - pager• Access control and home automation functions• The ability of cooperation with wireless devices modules
Power supply:	16.5 V AC / 700 mA
Power consumption:	≤ 40 VA
Operation temp:	0 °C ... 50 °C
Permissible relative humidity:	93 %
Dimensions:	190 x 91 mm

DELTA-OPTI Monika Matysiak; <https://www.delta.poznan.pl>
POL; 60-713 Poznań; Graniczna 10
e-mail: delta-opti@delta.poznan.pl; tel: +(48) 61 864 69 60

Weight:	0.186 kg
Supported languages:	English
Country of origin:	Canada
Manufacturer / Brand:	PARADOX
Guarantee:	2 years

PRESENTATION

Control panel mainboard:



In the kit:

