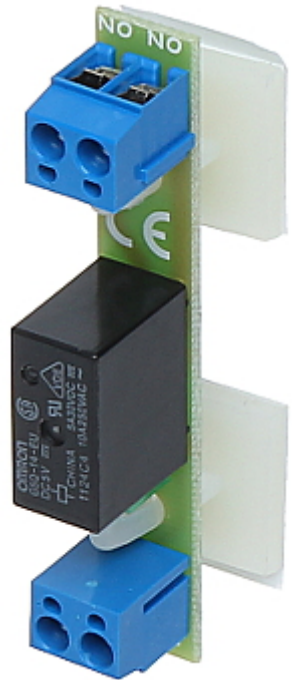


Code: PK1-5-ZN

NORMALLY OPEN RELAY MODULE **PK1-5-ZN**

Net: **3.59 EUR** Gross: **4.42 EUR**



It can be used to increase maximal load of controller transistor output line and for galvanic isolation between output line and load point.

The self-adhesive distance elements allow to easy PCB assembly.

SPECIFICATION

Number of relay outputs:	1
Power supply:	5 ... 9 V DC
Current consumption:	80 mA / 5 V DC
Relay maximal load:	5 A (max), 30 V DC / 50 V AC (max)
Output:	NO
Application:	relay for electromagnetic lock/electric strike
Main features:	<ul style="list-style-type: none">• Mounting with self-adhesive bases,• LED indication,• Protections : Overvoltage, Reverse polarity connection
Operation temp:	-40 °C ... 85 °C
Weight:	0.02 kg
Dimensions:	69 x 18 x 27 mm
Manufacturer / Brand:	DELTA
Guarantee:	3 years

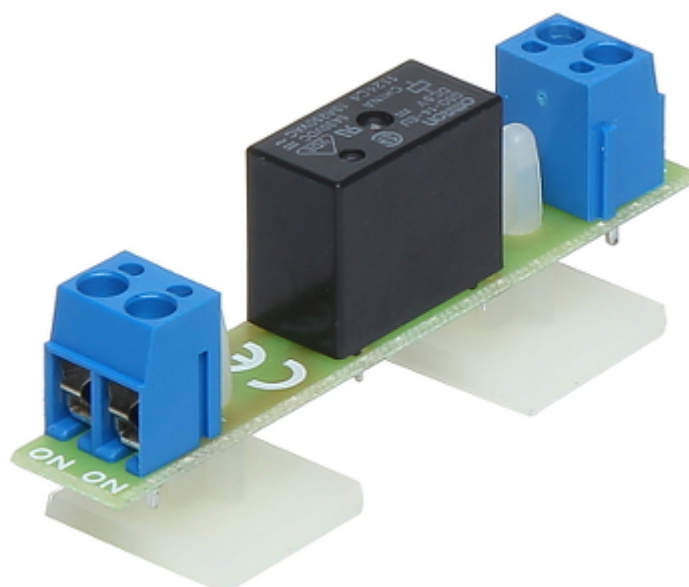
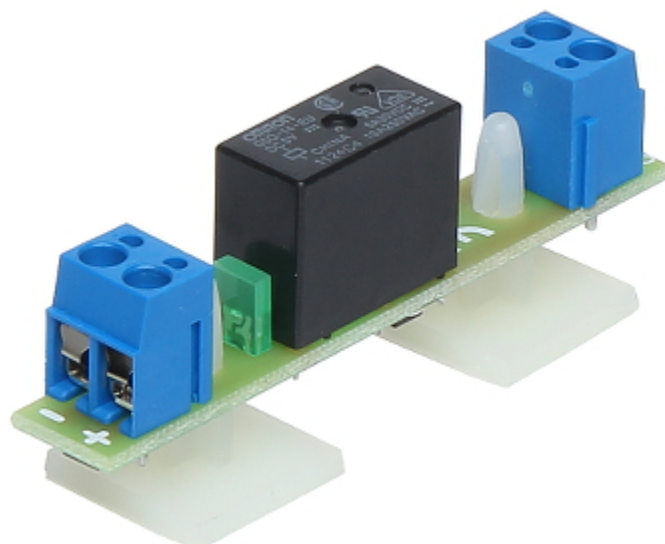
PRESENTATION

Top view:

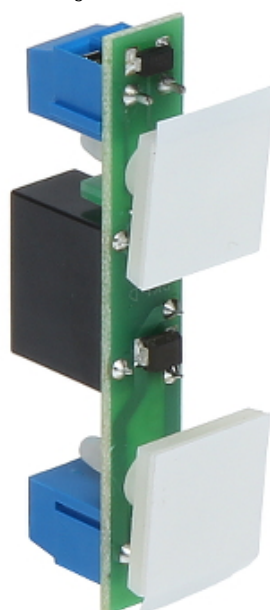


DELTA-OPTI Monika Matysiak; <https://www.delta.poznan.pl>
POL; 60-713 Poznań; Graniczna 10
e-mail: delta-opti@delta.poznan.pl; tel: +(48) 61 864 69 60

Connectors:



Mounting side view:



Schematic diagram:

