

Code: IEC-W/SKR-113

## PLUG IEC-W/SKR-113 CABELCON

Net: 0.77 EUR Gross: 0.95 EUR



IEC plug, clamped on coaxial cable.

The patented design, based on "Self-Install" concept, ensures professional, durable connection. Whole procedure takes no more than several seconds. The connector installed properly is fully integrated with the cable, however the plug is reusable - the cap can be unscrewed and the plug pulled off.

### SPECIFICATION

Connector type:	IEC Straight plug
Attachment of connector elements:	Twisting on
Shield fastening:	Twisting-on
Wire mounting:	Pressing
Application:	Coaxial cable
Dielectric diameter:	min. 4.9 mm max. 5.1 mm
Cable diameter:	max. 7.5 mm
Impedance:	75 $\Omega$
Material:	Metal / PET
Watertightness:	✓
Example of application:	<ul style="list-style-type: none"><li>• RG6</li><li>• HFEC</li><li>• Triset113</li></ul>
Main features:	<ul style="list-style-type: none"><li>• Very easy and quick assembly</li><li>• Corrosion resistance</li></ul>
Weight:	0.012 kg
Dimensions:	$\varnothing$ 14 x 38 mm
Manufacturer / Brand:	CABELCON
Guarantee:	2 years

### PRESENTATION

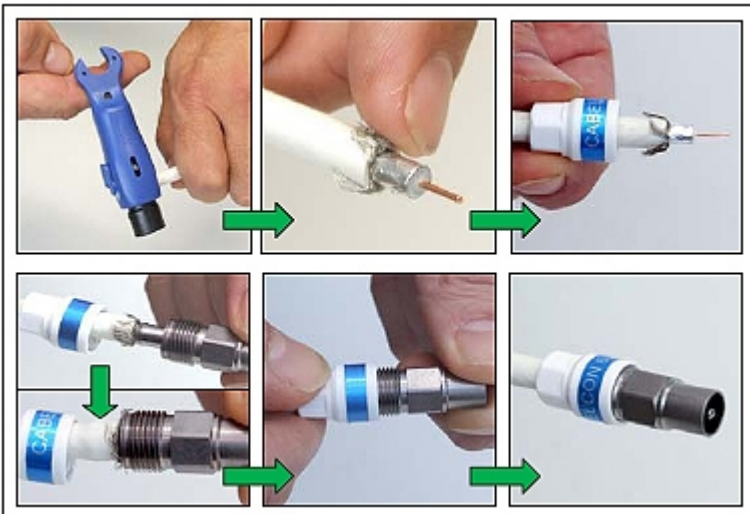
DELTA-OPTI Monika Matysiak; <https://www.delta.poznan.pl>  
POL; 60-713 Poznań; Graniczna 10  
e-mail: delta-opti@delta.poznan.pl; tel: +(48) 61 864 69 60



Internal view:



Assembly instruction:



**PACKAGE**

Dimensions (L x W x H): 0x0x0 mm	Gross Weight: 0 kg
----------------------------------	--------------------