

Code: APS-15-BO

BUFFERED POWER SUPPLY ADAPTER **APS-15-BO** SATEL

Net: **20.58 EUR** Gross: **25.31 EUR**

The buffered power supply adapter is designed to powering control panels, sensors, code locks, cameras, consoles, intercoms and other alarm system equipment.



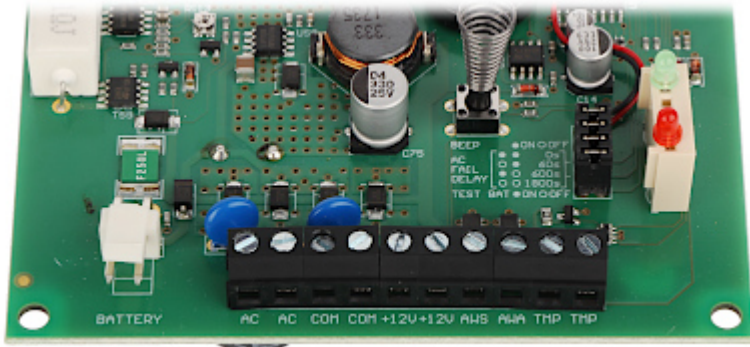
SPECIFICATION

Adapter type:	Switching
Power voltage:	17 ... 20 V AC
Output voltage:	12 V DC
Output voltage adjustment:	—
Maximal load:	1.5 A
Battery charging current:	0.5 A
Output power:	18 W
Number of outputs:	2 pcs
Protections:	<ul style="list-style-type: none">• Overvoltage• Overload protection
Main features:	<ul style="list-style-type: none">• Microprocessor based battery charge control system• Tamper signaling• LED indication• 2 x OC output
Operation temp:	5 °C ... 40 °C
Weight:	0.07 kg
Dimensions:	102 x 82 x 63 mm
Manufacturer / Brand:	SATEL
Guarantee:	2 years

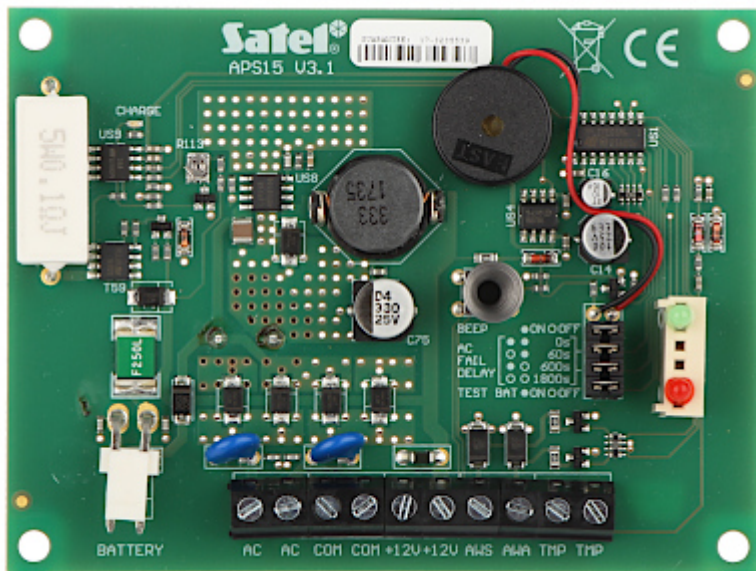
PRESENTATION

Adapter connectors:

DELTA-OPTI Monika Matysiak; <https://www.delta.poznan.pl>
POL; 60-713 Poznań; Graniczna 10
e-mail: delta-opti@delta.poznan.pl; tel: +(48) 61 864 69 60



Top view:



In the kit:



PACKAGE

Dimensions (L x W x H): 0x0x0 mm	Gross Weight: 0 kg
----------------------------------	--------------------