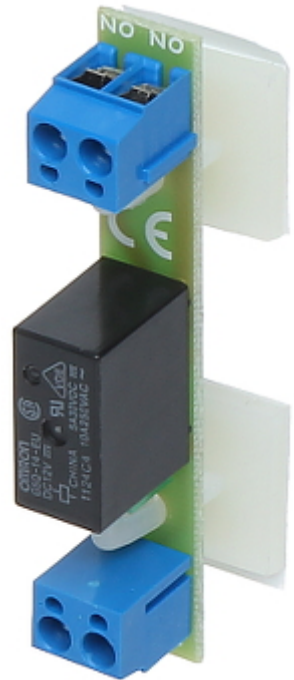


Code: PK1-12-ZN

## NORMALLY OPEN RELAY MODULE **PK1-12-ZN** DELTA

Net: **5.58 EUR** Gross: **5.58 EUR**



It can be used to increase maximal load of controller transistor output line and for galvanic isolation between output line and load point.

The self-adhesive distance elements allow to easy PCB assembly.

### SPECIFICATION

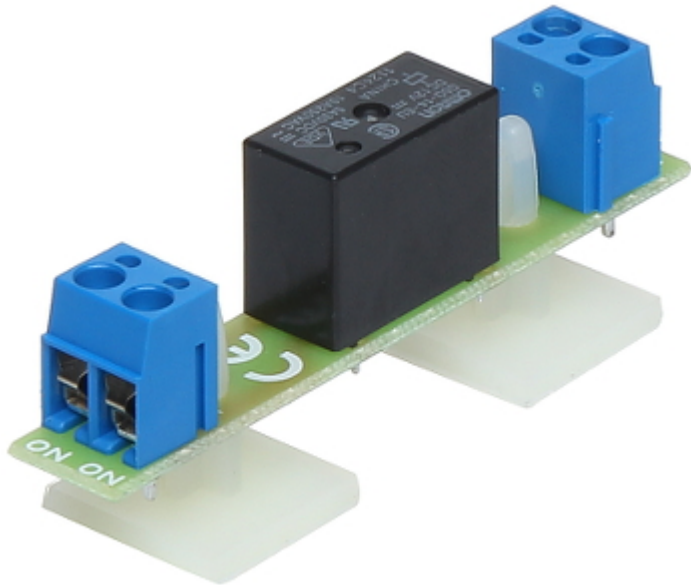
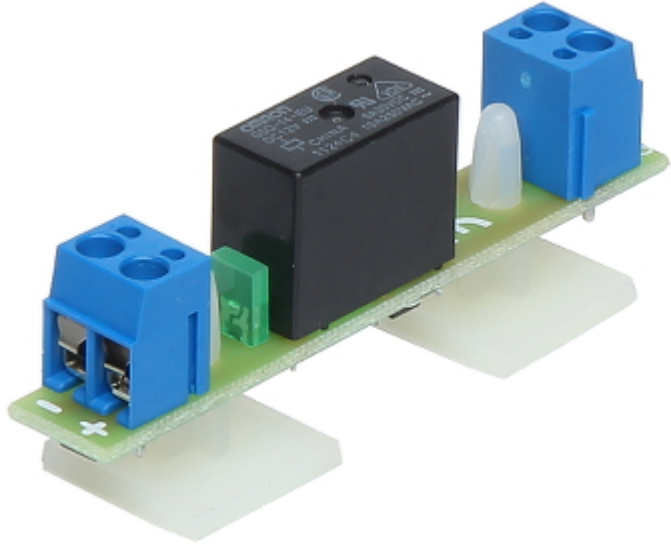
Number of relay outputs:	1
Power supply:	10 ... 16 V DC
Current consumption:	35 mA / 12 V DC
Relay maximal load:	10 A (max), 30 V DC / 50 V AC (max)
Output:	NO
Application:	relay for electromagnetic lock/electric strike
Main features:	<ul style="list-style-type: none"><li>• Mounting with self-adhesive bases,</li><li>• LED indication,</li><li>• Protections : Overvoltage, Reverse polarity connection</li></ul>
Operation temp:	-10 °C ... 40 °C
Weight:	0.02 kg
Dimensions:	69 x 18 x 27 mm
Manufacturer / Brand:	DELTA
Guarantee:	<b>3 years</b>

### PRESENTATION

Top view:

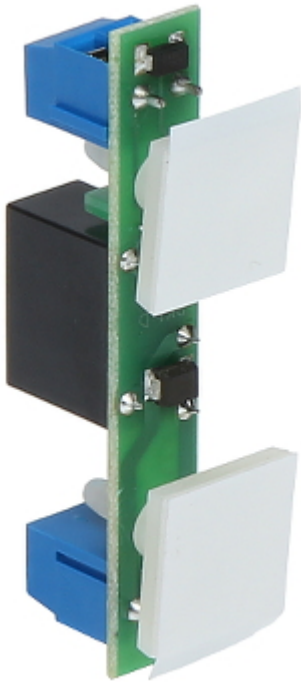


Connectors:

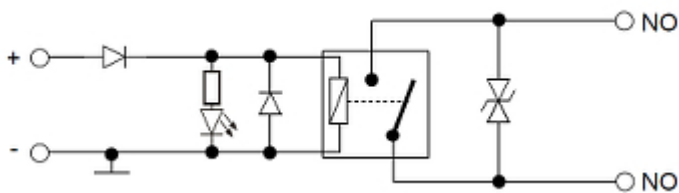


Mounting side view:





Schematic diagram:



#### PACKAGE

Dimensions (L x W x H): 0x0x0 mm	Gross Weight: 0 kg
----------------------------------	--------------------

