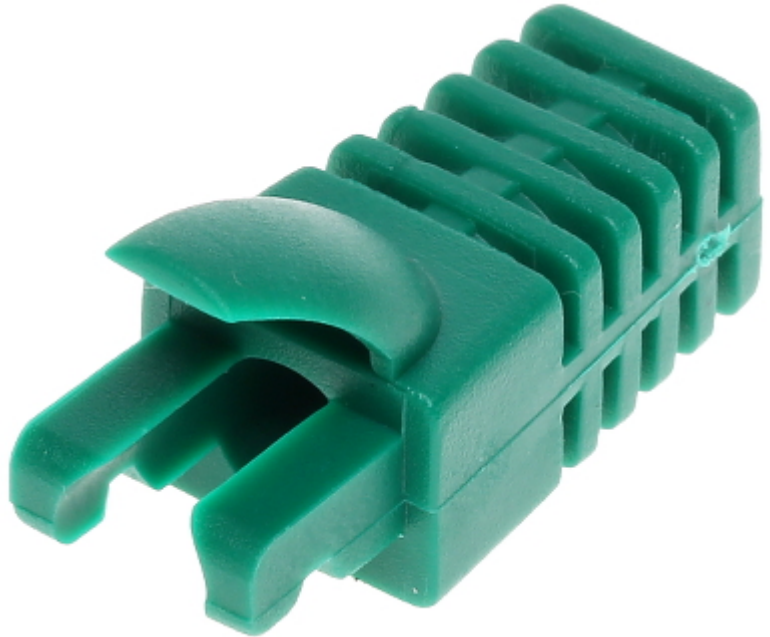


Code: RJ45/WP-G/INF

## RJ-45 PLUG INTERNAL SHIELD **RJ45/WP-G/INF**

Net: **0.05 EUR** Gross: **0.06 EUR**

The shield should be mounted before crimping the RJ45 plug. After crimping the plug there is no possibility to remove the shield.



### SPECIFICATION

|              |                                    |
|--------------|------------------------------------|
| Application: | RJ-45 modular plug internal shield |
| Material:    | Rubber                             |
| Color:       | Green                              |
| Weight:      | 0.001 kg                           |
| Dimensions:  | 27 x 12 x 15 mm                    |
| Guarantee:   | 2 years                            |

### PRESENTATION



DELTA-OPTI Monika Matysiak; <https://www.delta.poznan.pl>  
POL; 60-713 Poznań; Graniczna 10  
e-mail: [delta-opti@delta.poznan.pl](mailto:delta-opti@delta.poznan.pl); tel: +(48) 61 864 69 60

Example of application:

