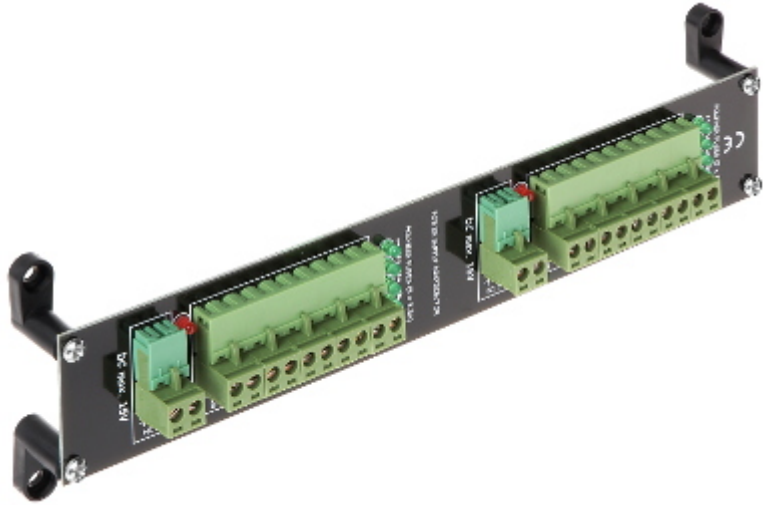


Code: LZ-10/POL/R

POWER SUPPLY DISTRIBUTOR LZ-10/POL/R

Net: 16.09 EUR Gross: 16.09 EUR

The LZ-10/POL/R is a passive device that enables power ordered distribution from one or several higher power units.
If necessary the terminals can be connected in parallel.



SPECIFICATION

Number of power outputs:	10 (2 x 5 outputs)
Number of power inputs:	2 (one per each 5-outputs terminal)
Maximal power voltage:	15 V DC (typical 12V)
Maximal power supply current:	12.5 A (for single terminal)
Max. output current for single output:	2.5 A
Protection type:	10 x 2.5 A - Polymer fuse
Power connectors type:	Input : Cable terminals Output : Cable terminals
Operation temp:	-50 °C ... 55 °C
Permissible relative humidity:	< 95 %
Housing type:	PCB
Weight:	0.08 kg
Dimensions:	216 x 40 x 20 mm
Manufacturer / Brand:	DELTA
Guarantee:	3 years

PRESENTATION

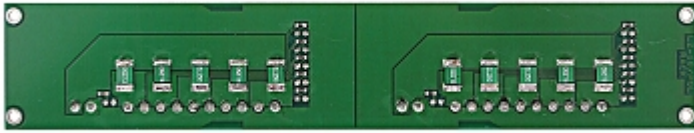
Front panel:



Rear view:



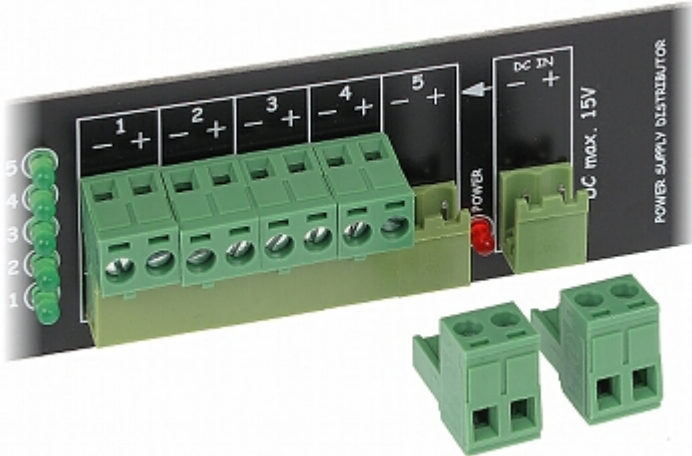
DELTA-OPTI Monika Matysiak; <https://www.delta.poznan.pl>
POL; 60-713 Poznań; Graniczna 10
e-mail: delta-opti@delta.poznan.pl; tel: +(48) 61 864 69 60



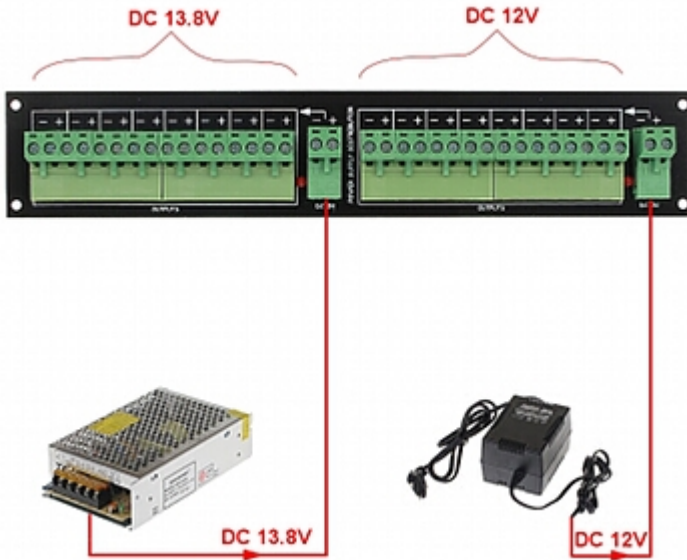
Top view:



All terminals are separable:



Schematic diagram of distributor application with two different voltages option:



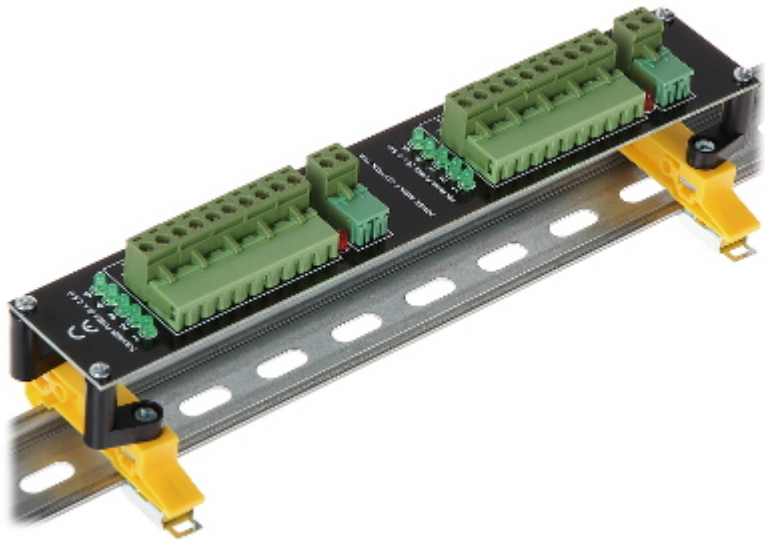
The LZ-10/POL/R device is designed to mount in the A19-FRAME panel or as the separate device:



Preparing the device to assembly in RACK cabinet.

Attention! At assembled example, the A19-FRAME mounting panel and A19-MASK cover plate must be purchased separately.

The device can be conveniently mounted on the (*DIN TS-35*) rail:



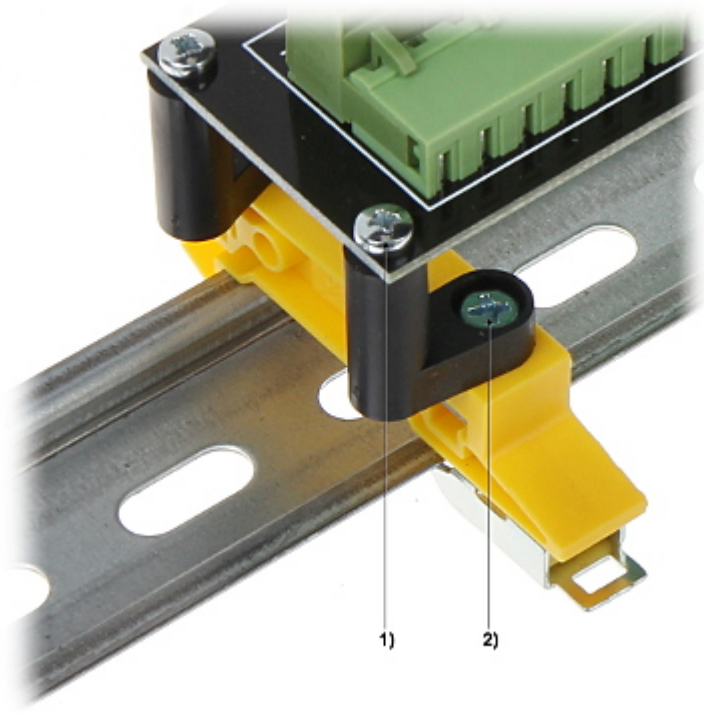
For this purpose mount the WM-35 (available separately):



Then install the LPCB-1 (included):



The whole must be made as shown below:



- 1) M3 x 10 screw
 - 2) M4 x 12 screw
- In the kit:



PACKAGE

Dimensions (L x W x H): 0x0x0 mm	Gross Weight: 0 kg
----------------------------------	--------------------

