

Code: EPRADO-R19-6U/450

HANGING RACK CABINET **EPRADO-R19-6U/450**

Net: **90.65 EUR** Gross: **90.65 EUR**

More and more home devices to LAN, RTV, CCTV installations are made with a view to the RACK system, so that their installation is aesthetically pleasing, and that devices are protected against accidental mechanical damages.

The EPRADO-R19-6U/450 cabinet is suitable for mounting all sorts of devices in standard 19" rack housings. Ideal solution for installing DVRs, power units, splitters, headends, network devices, etc. Inside the cabinet can be also place the devices that are not in standard RACK-19" housings, for example DVRs, multiswitches, RTV-SAT amplifiers, modulators. For this purpose the user should mount additional shelf/shelves available for RACK cabinet.

The RACK cabinet has many openings ensuring adequate air circulation. Additionally, it is possible to install fans to increase the ventilation.

Wall mounting with: mounting bracket for hanging cabinets A19-AL (not included in the kit) or hangers (not included).

Warning! To install the shelf 4-point mounted you should purchase the A19PR/6U*P2 profile.



SPECIFICATION

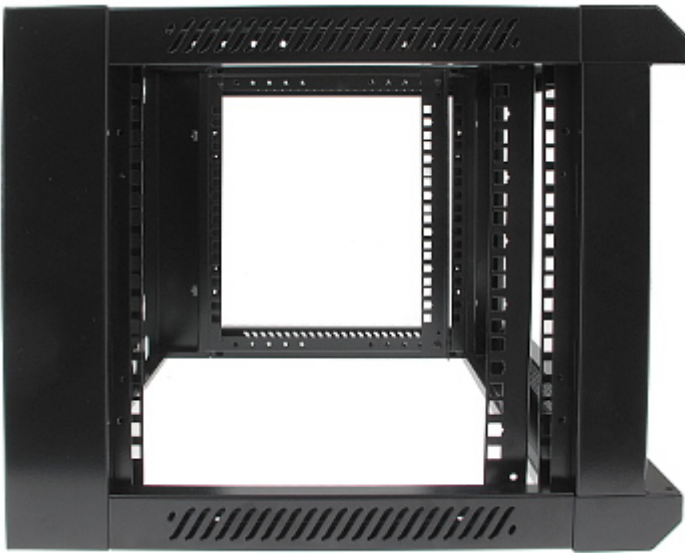
Internal width:	19 "
Internal height:	6 U
Internal depth:	350 mm
External width:	570 mm
External height:	368 mm
External depth:	450 mm
Holes for fan coolers:	105 x 105 mm (2 places)
Bearing capacity:	60 kg
Color:	Black RAL9004
Door:	<ul style="list-style-type: none">• Front: glass• Side: metal, snap-in
Main features:	<ul style="list-style-type: none">• Cable entries are placed from the top and bottom• Removable side panels• Possibility to mount the door as left or right• 2 keys included• 2 pcs Rack rails to mounting the devices
Weight:	14.500 kg
Guarantee:	3 years

PRESENTATION

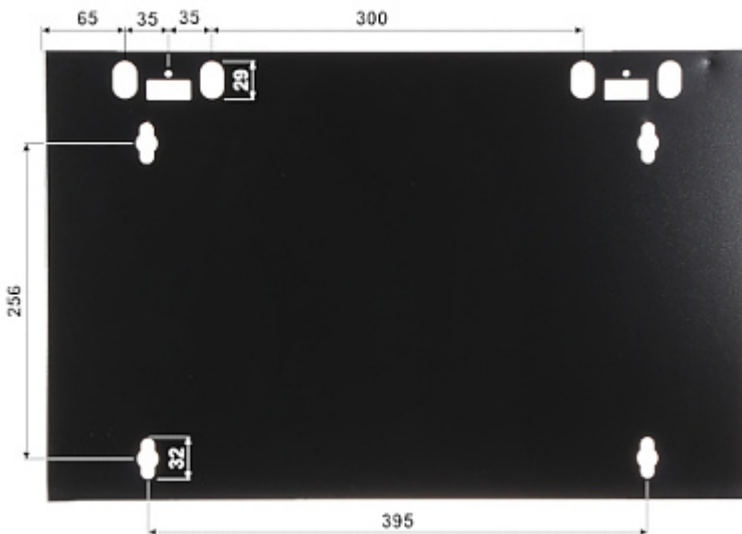
DELTA-OPTI Monika Matysiak; <https://www.delta.poznan.pl>
POL; 60-713 Poznań; Graniczna 10
e-mail: delta-opti@delta.poznan.pl; tel: +(48) 61 864 69 60



Side view (no mounted sides and back cover):



Rear view:



The correct order of assembly:



Assemble two frames of the sides:



Whole frame connect to the base and cabinet cover:



Put the side walls (clip-on), and glass door:



PACKAGE

Dimensions (L x W x H): 0x0x0 mm	Gross Weight: 0 kg
----------------------------------	--------------------

