

Code: 2R-D7

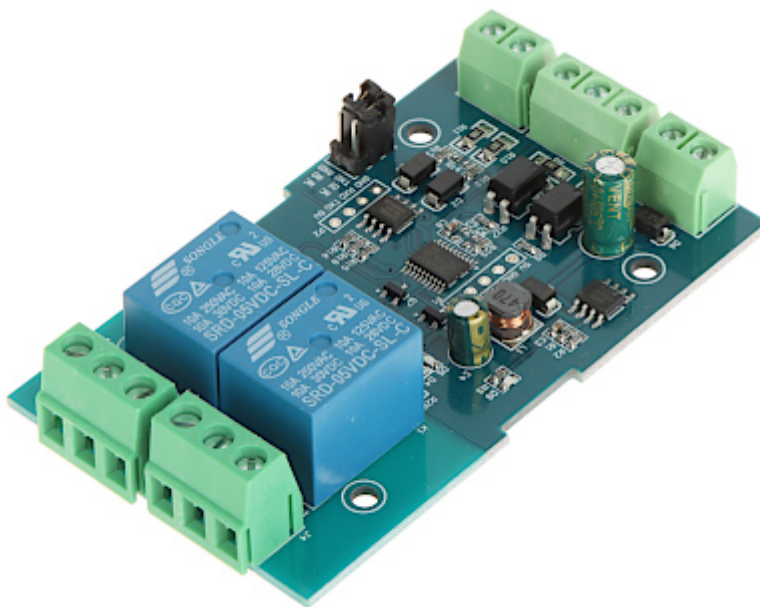
RELAY MODULE **2R-D7** Modbus RTU

Net: **9.48 EUR** Gross: **9.48 EUR**

The 2R-D7 module allows you to control 2 relays using the Modbus RTU protocol. Communication with the device can take place via the RS-485 or UART TTL interface.

In addition, the device has 2 control inputs protected with optocouplers (input voltage range: 3.3 V ... 30 V). The voltage from the control inputs is not the voltage directly supplying the relay coil.

Attention! The selection of the control interface is made by means of jumpers placed on the board. It is not possible to control the outputs using both communication paths simultaneously.



SPECIFICATION

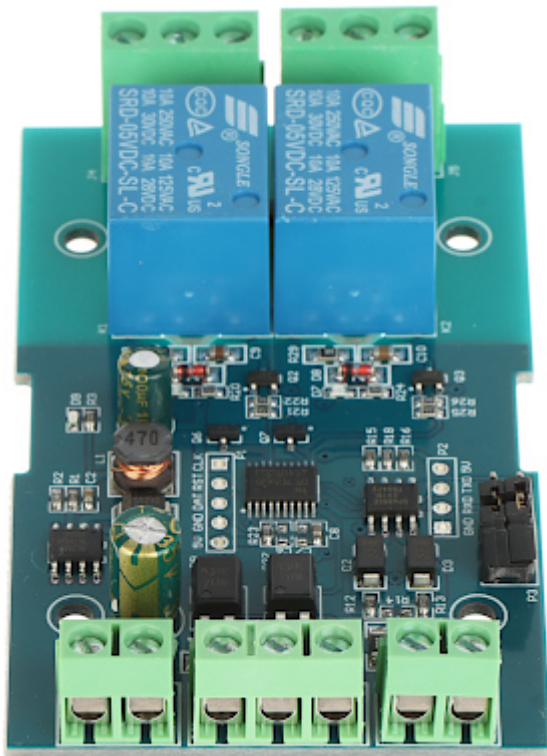
PTZ control:	RS-485 / UART TTL
Protocol:	Modbus RTU
Transmission speed:	4800 / 9600 / 19200 b/s (default: 9600 b/s)
Number of inputs:	2 pcs
Number of relay outputs:	2 pcs
Relay maximal load:	10 A / 250 V AC , 10 A / 30 V DC
Output:	2 x NO/NC
Main features:	<ul style="list-style-type: none">• LED indication• The control inputs protected with optocouplers, which allows the use of control signals with voltages in the range of 3.3 V DC ... 30 V DC• The UART interface input is adapted to the installation of gold-pins for signals with voltages adapted to the TTL level (3.3 V DC / 5 V DC)• Possibility to configure the device address (with saving the settings after a power failure) in the range of 1 - 255 (default address 255)• Possibility to set the delay of the relay operation (base unit: 0.1 s, value range: 0.1 s ... 6553.5 s)• Protection against reverse polarity of the input voltage
Power supply:	7 V ... 24 V DC (power adapter not included)
Weight:	0.046 kg
Dimensions:	85 x 49 x 19 mm
Guarantee:	2 years

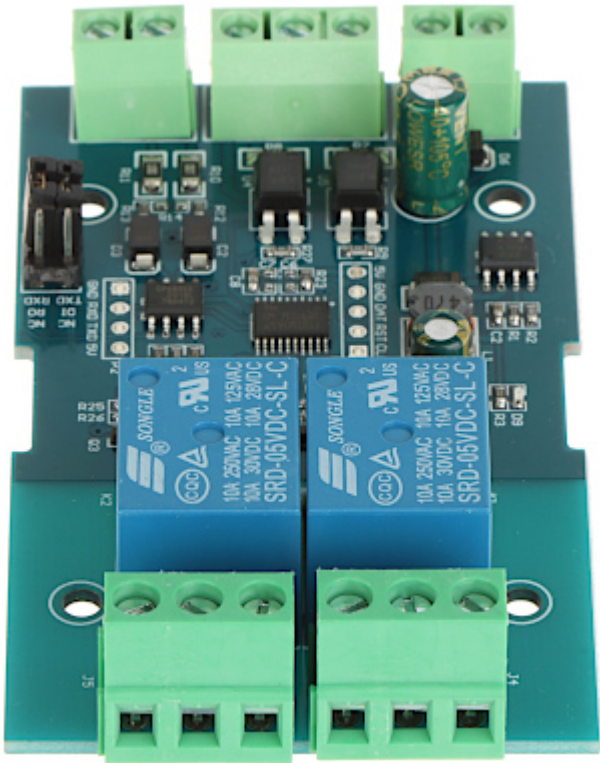
PRESENTATION

DELTA-OPTI Monika Matysiak; <https://www.delta.poznan.pl>
POL; 60-713 Poznań; Graniczna 10
e-mail: delta-opti@delta.poznan.pl; tel: +(48) 61 864 69 60

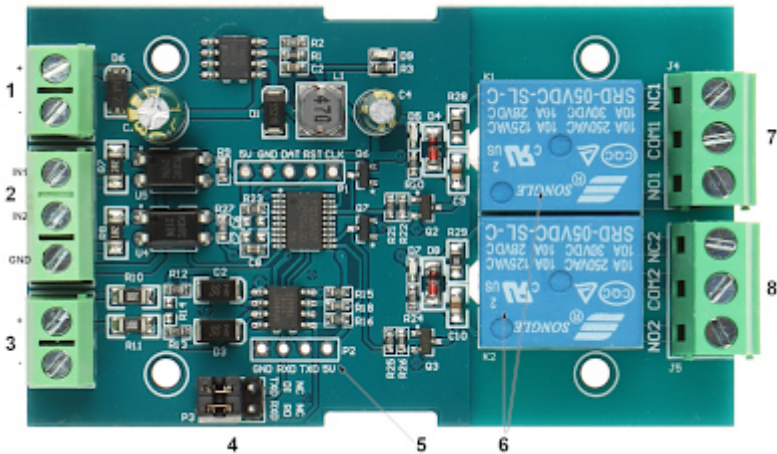


Connectors:



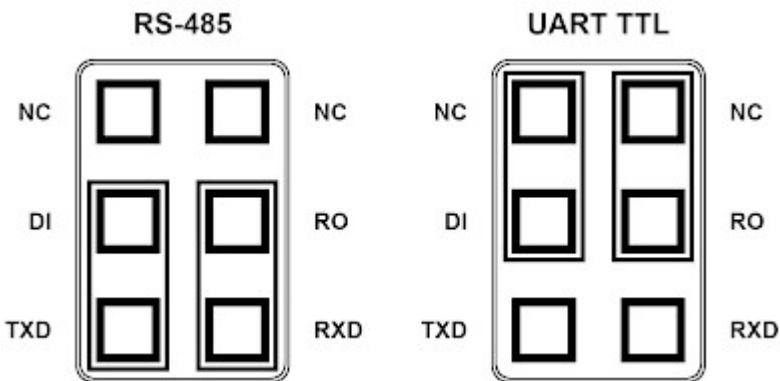


Connectors description:



1. Power supply
2. Control inputs
3. RS-485
4. Channel selection jumpers
5. UART TTL
6. RELAY
7. 1 relay output
8. 2 relay output

Configuration of the transmission path with jumpers:



PACKAGE

Dimensions (L x W x H): 0x0x0 mm	Gross Weight: 0 kg
----------------------------------	--------------------

