

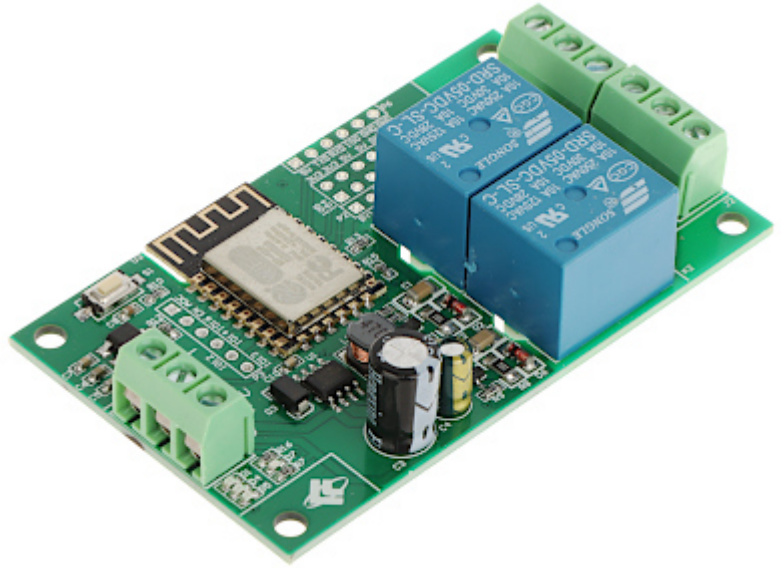
Code: ESP12-2R-D8

RELAY MODULE **ESP12-2R-D8** Wi-Fi

Net: **11.12 EUR** Gross: **11.12 EUR**

The ESP12-2R-D8 module allows you to wireless control 2 relays. Communication with the device takes place via the Wi-Fi interface.

The Arduino IDE or Eclipse package tools can be used to program the module. The module programming is done through the UART TTL serial port.

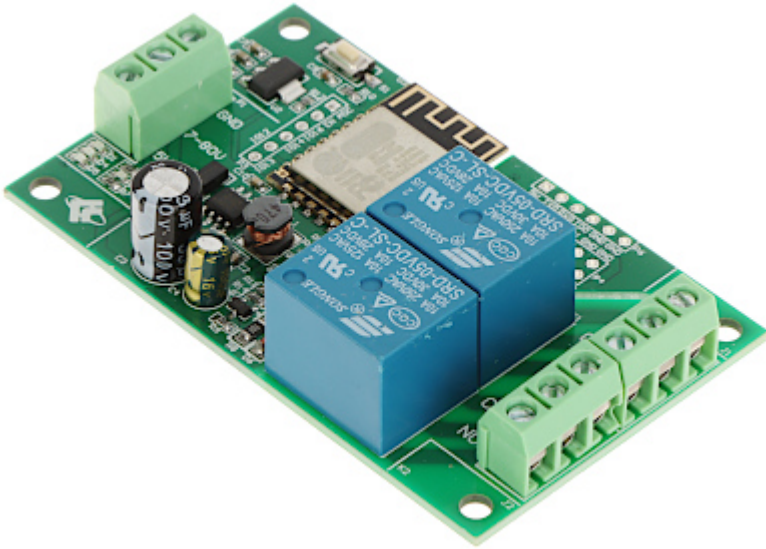


SPECIFICATION

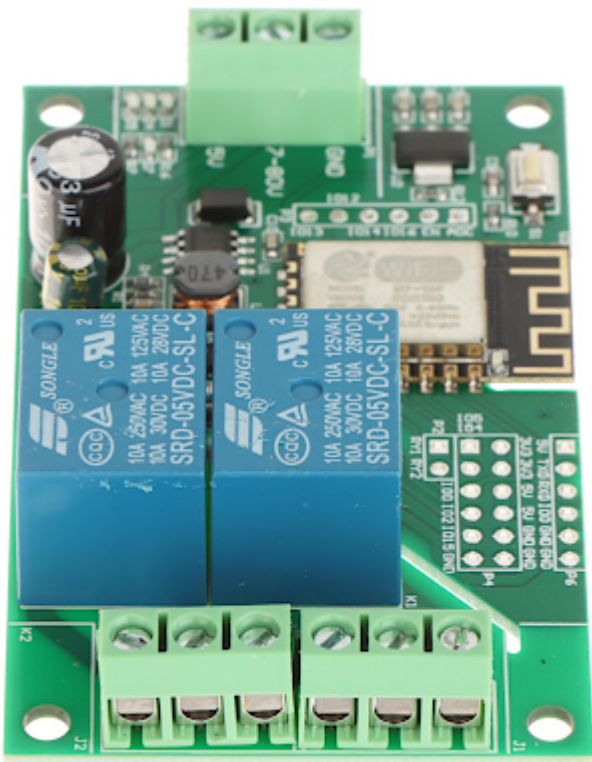
PTZ control:	Wi-Fi
Protocol:	IEEE 802.11 b/g/n/e/i, Wi-Fi Direct (P2P), TCP, UDP
Number of inputs:	—
Number of relay outputs:	2 pcs
Relay maximal load:	10 A / 250 V AC , 10 A / 30 V DC
Output:	2 x NO/NC
Main features:	<ul style="list-style-type: none">• LED indication• Programming with Arduino IDE or Eclipse tools• The module can be used as an element of IoT (Internet of Things) systems• The Wi-Fi module works in the 2.4 GHz band
Power supply:	7 V ... 30 V DC or 5 V DC (power adapter not included)
Weight:	0.04 kg
Dimensions:	78 x 47 x 19 mm
Guarantee:	2 years

PRESENTATION

DELTA-OPTI Monika Matysiak; <https://www.delta.poznan.pl>
POL; 60-713 Poznań; Graniczna 10
e-mail: delta-opti@delta.poznan.pl; tel: +(48) 61 864 69 60

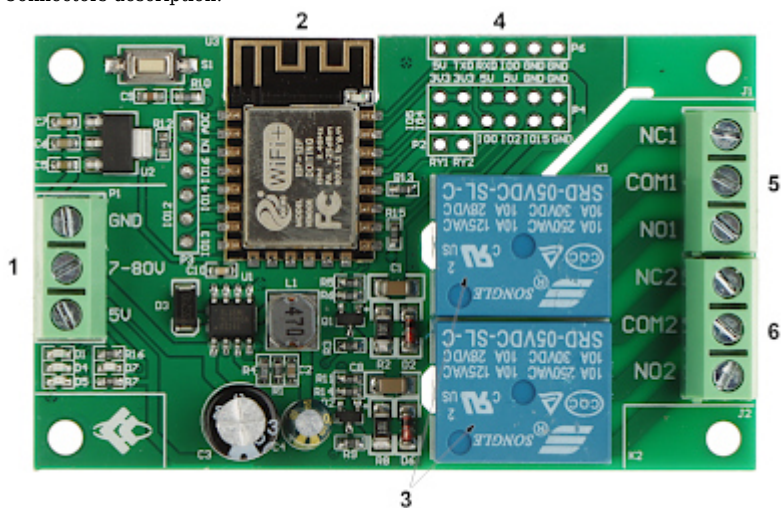


Connectors:

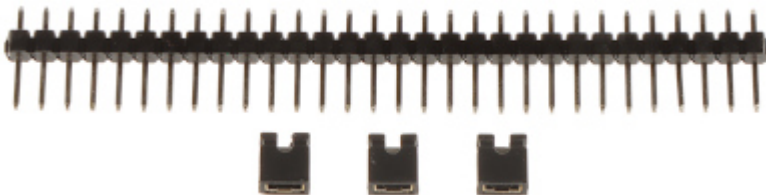




Connectors description:



- 1. Power supply
 - 2. Wi-Fi module
 - 3. RELAY
 - 4. UART TTL serial port
 - 5. 1 relay output
 - 6. 2 relay output
- In the kit:



PACKAGE

Dimensions (L x W x H): 0x0x0 mm	Gross Weight: 0 kg
----------------------------------	--------------------