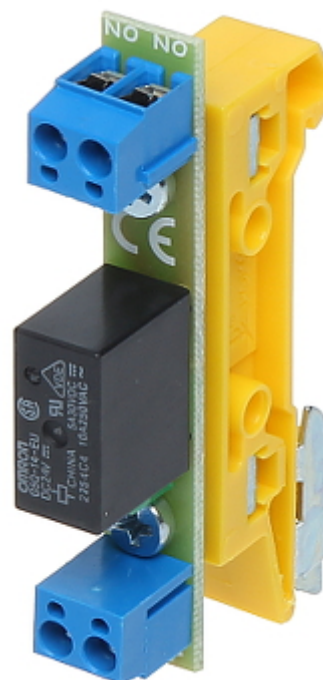


Code: PK1-24-ZD

## NORMALLY OPEN RELAY MODULE **PK1-24-ZD** DELTA

Net: 7.20 EUR Gross: 7.20 EUR



It can be used to increase maximal load of controller transistor output line and for galvanic isolation between output line and load point.

### SPECIFICATION

Number of relay outputs:	1
Power supply:	24 ... 45 V DC
Current consumption:	17 mA 24 V DC
Relay maximal load:	5 A (max), 30 V DC / 50 V AC (max)
Output:	NO
Application:	relay for electromagnetic lock/electric strike
Main features:	<ul style="list-style-type: none"><li>• DIN, TS-35 rail mounting,</li><li>• LED indication,</li><li>• Protections : Overvoltage, Reverse polarity connection</li></ul>
Operation temp:	-40 °C ... 85 °C
Weight:	0.03 kg
Dimensions:	73 x 12 x 41 mm
Manufacturer / Brand:	DELTA
Guarantee:	<b>3 years</b>

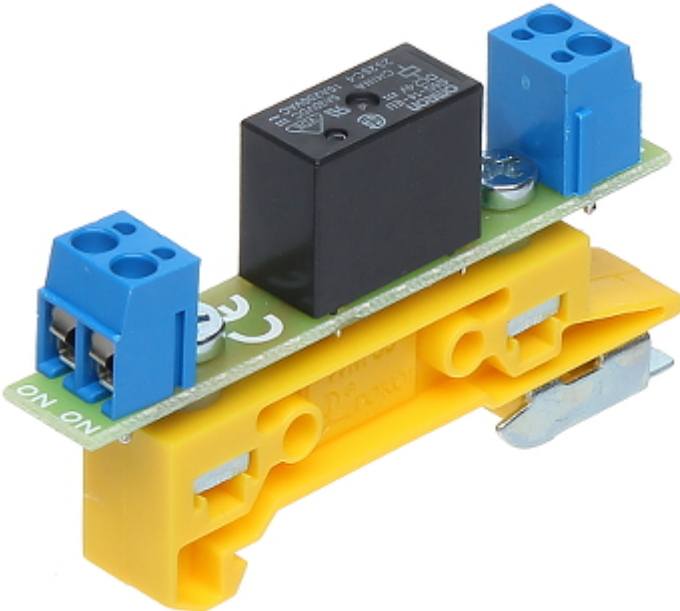
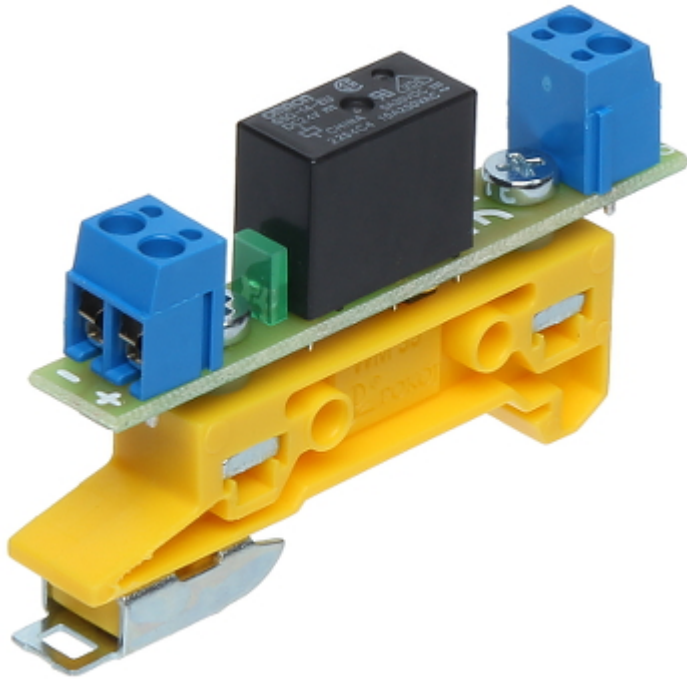
### PRESENTATION

Top view:

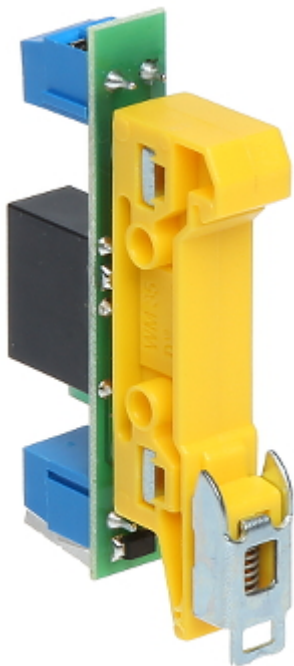


Connectors:

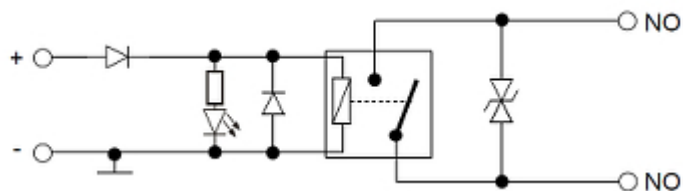
DELTA-OPTI Monika Matysiak; <https://www.delta.poznan.pl>  
POL; 60-713 Poznań; Graniczna 10  
e-mail: [delta-opti@delta.poznan.pl](mailto:delta-opti@delta.poznan.pl); tel: +(48) 61 864 69 60



Mounting side view:



Schematic diagram:



#### PACKAGE

Dimensions (L x W x H): 0x0x0 mm	Gross Weight: 0 kg
----------------------------------	--------------------

