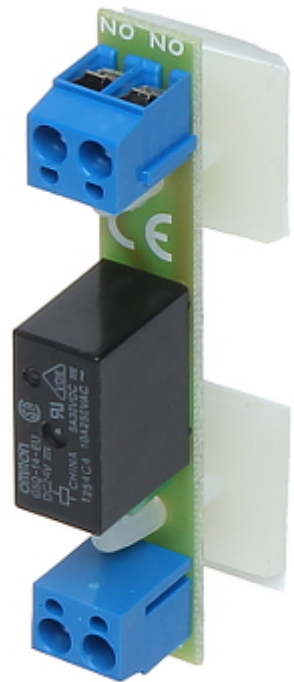


Code: PK1-24-ZN

## NORMALLY OPEN RELAY MODULE **PK1-24-ZN** DELTA

Net: 18.90 PLN Gross: 23.25 PLN



It can be used to increase maximal load of controller transistor output line and for galvanic isolation between output line and load point.

The self-adhesive distance elements allow to easy PCB assembly.

### SPECIFICATION

Number of relay outputs:	1
Power supply:	24 ... 45 V DC
Current consumption:	17 mA / 24 V DC
Relay maximal load:	5 A (max), 30 V DC / 50 V AC (max)
Output:	NO
Application:	relay for electromagnetic lock/electric strike
Main features:	<ul style="list-style-type: none"><li>• Mounting with self-adhesive bases,</li><li>• LED indication,</li><li>• Protections : Overvoltage, Reverse polarity connection</li></ul>
Operation temp:	-10 °C ... 40 °C
Weight:	0.02 kg
Dimensions:	69 x 18 x 27 mm
Manufacturer / Brand:	DELTA
Guarantee:	<b>3 years</b>

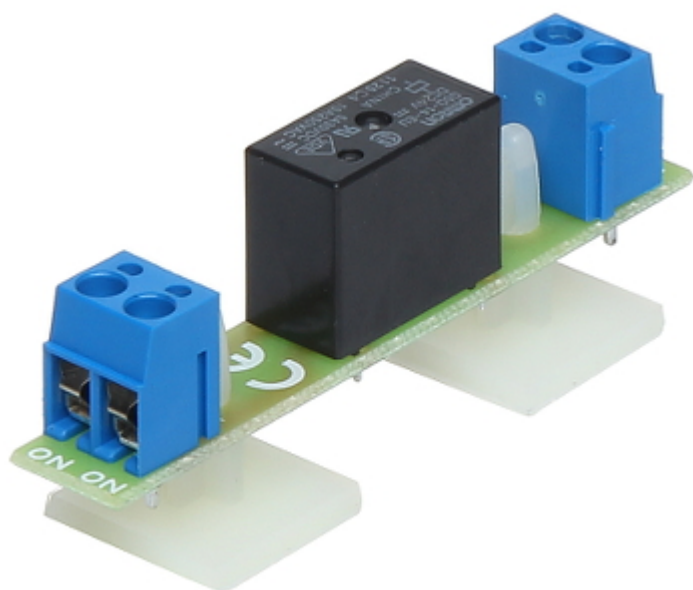
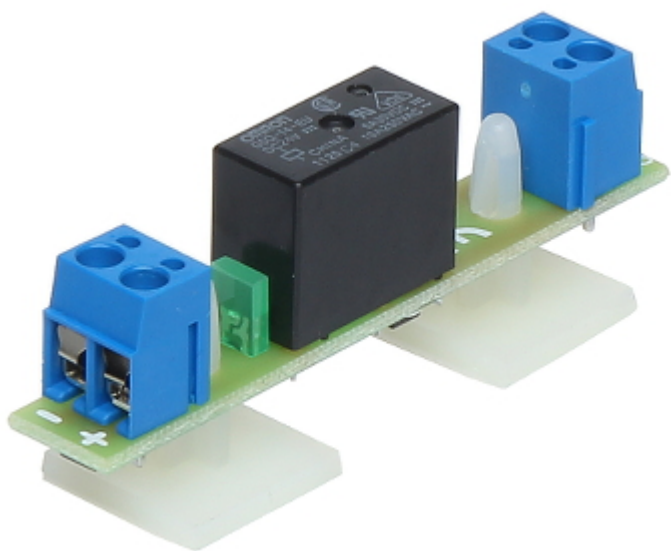
### PRESENTATION

Top view:

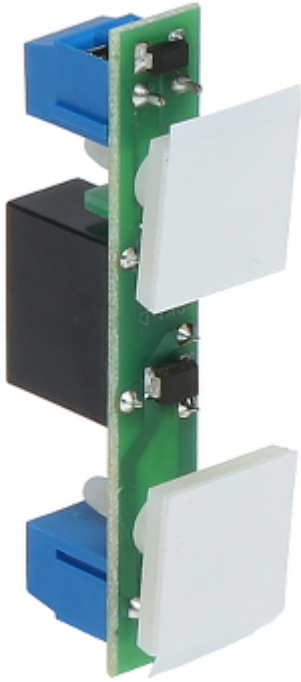


DELTA-OPTI Monika Matysiak; <https://www.delta.poznan.pl>  
POL; 60-713 Poznań; Graniczna 10  
e-mail: [delta-opti@delta.poznan.pl](mailto:delta-opti@delta.poznan.pl); tel: +(48) 61 864 69 60

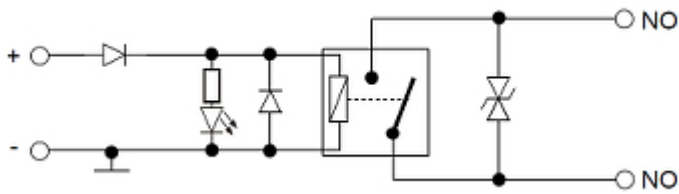
Connectors:



Mounting side view:



Schematic diagram:



#### PACKAGE

Dimensions (L x W x H): 0x0x0 mm	Gross Weight: 0 kg
----------------------------------	--------------------

