

Code: XB-NAVIIGPS

## VEHICLE CAMERA XB-NAVIIGPS Xblitz

Net: 85.92 EUR Gross: 105.68 EUR

The XB-NAVIIGPS recorder is the mobile device designed to indoor using, which allows to recording the video sequences e.g. from moving car. With this recording you can greatly facilitate any investigation of guilt for various traffic incidents, as well as registered attempts to break or damage the vehicle in the parking lot.

Built-in GPS allows to approximate indication of vehicle position and speed. Installation of the unit is very simple, and the positioning of the camera does not cause any problems.

The recording is automatically divided into sections with a length of 3, 5, 10 minutes. Currently recording section is protected against overwriting when it detects impact or hard braking by G-Sensor, or using the corresponding button. Memory card not included in the kit.



### SPECIFICATION

Sensor:	1/3 " AR0330 CMOS
View angle:	140 °
Display:	2 " TFT LCD
Speaker:	✓
Microphone:	✓
LED illuminator:	—
Memory:	External: microSD cards socket (card is not included)
Max. capacity of memory card:	64 GB
Compression:	H.264 (MOV file format)
Resolution of recording video files:	1920 x 1080 - 1080p @ 30 fps , 1280 x 720 - 720p @ 30 fps 848 x 480 @ 30 fps 640 x 480 @ 30 fps
Recorded frames resolution:	4032 x 3024 (JPG file format)
Operation modes:	<ul style="list-style-type: none"><li>• Auto recording after power on</li><li>• Manual recording</li><li>• Photo camera</li><li>• PC camera</li></ul>
Memory storage for video recording:	~ 90 MB/min (at Full HD and 30 fps)

DELTA-OPTI Monika Matysiak; <https://www.delta.poznan.pl>  
POL; 60-713 Poznań; Graniczna 10  
e-mail: [delta-opti@delta.poznan.pl](mailto:delta-opti@delta.poznan.pl); tel: +(48) 61 864 69 60

Main features:	<ul style="list-style-type: none"> <li>• Built-in GPS allows to approximate indication of vehicle position and speed,</li> <li>• WDR - Wide Dynamic Range,</li> <li>• G-Sensor - impact and hard braking sensor</li> <li>• Protection of currently recording section against overwriting - automatically after triggering by G-Sensor / manual</li> <li>• Motion Detection</li> <li>• Warning about driver fatigue</li> <li>• Lights on alarm</li> <li>• Parking monitoring mode - stand-by mode camera starts recording after impact detection</li> <li>• Easy and universal mounting system</li> </ul>
Power supply:	<ul style="list-style-type: none"> <li>• From built-in battery - 400 mAh Li-Pol</li> <li>• From car power adapter (included) - 5 V DC micro USB</li> </ul>
Backup time:	The battery is only used to hold the clock and memory settings
Interfaces:	mini HDMI
Dimensions:	53 x 58 x 32 mm (without bracket)
Weight:	0.076 kg
Supported languages:	English, Chinese, French, Spanish, German, Polish, Portuguese, Russian, Italian
Manufacturer / Brand:	Xblitz
Guarantee:	2 years

## PRESENTATION



Front view:



Recorder sides view:



Rear view:



Mounting side view:



In the kit:



## OUR TESTS

DELTA-OPTI Monika Matysiak; <https://www.delta.poznan.pl>  
POL; 60-713 Poznań; Graniczna 10  
e-mail: [delta-opti@delta.poznan.pl](mailto:delta-opti@delta.poznan.pl); tel: +(48) 61 864 69 60

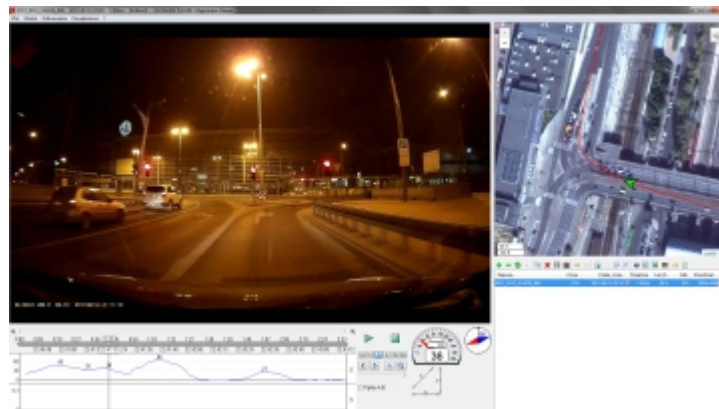
Record from camera during daylight operation: Record from camera during night conditions operation:

: :  
: :  
: :  
: :

Record from camera during night conditions operation:

:  
:

Built-in GPS allows to approximate indication of vehicle position and speed:



[Review:](#)

## OUR OPINIONS



- Very good quality of the image and sound.
- Autostart of recording after switch on the device.
- Possibility to record with car power adapter plugged in.
- Solid workmanship.



- Memory card not included in the kit.
- Short operation time with built-in battery supply.