

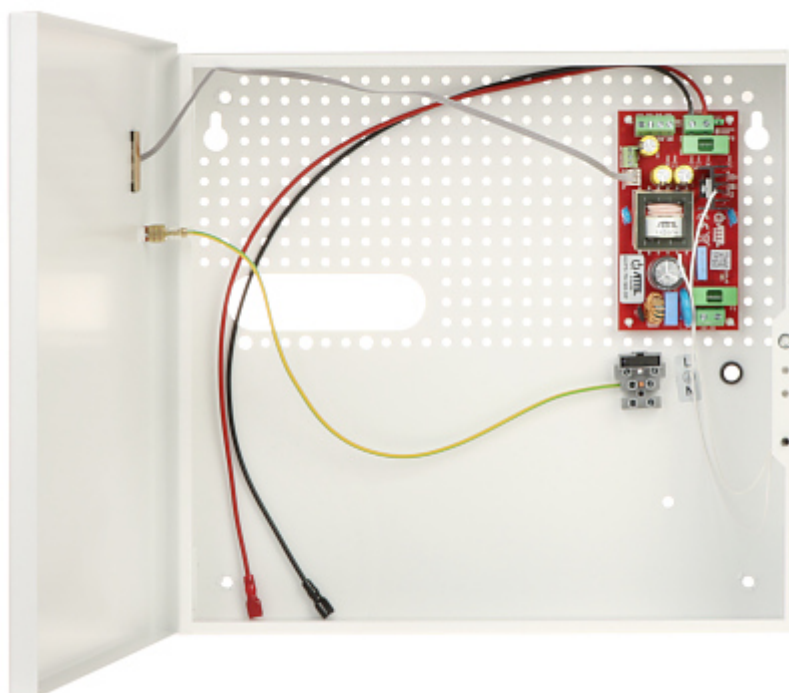
Code: AUPS-70-120-F

BUFFERED SWITCHING POWER SUPPLY ADAPTER **AUPS-70-120-F** ATTE

Net: 104.67 EUR Gross: 104.67 EUR

The buffered power supply adapter is designed to powering control panels, sensors, code locks, cameras, consoles, intercoms and other alarm system equipment.

Please pay attention for proper cooling conditions of the power adaptor during work!



SPECIFICATION

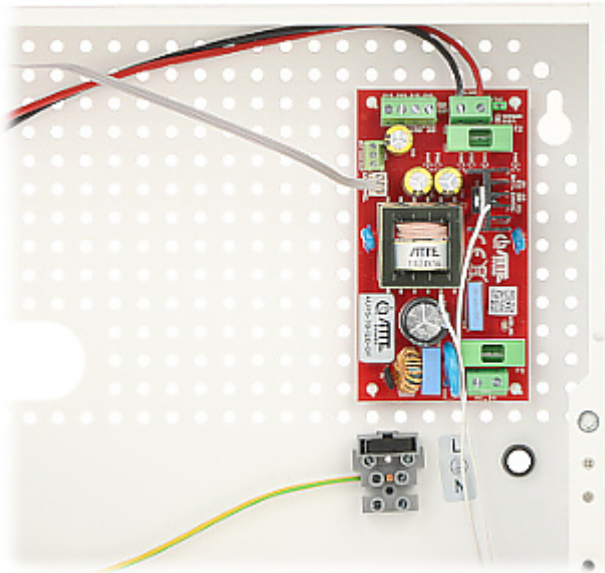
Adapter type:	Transforming
Input voltage:	190 ... 260 V AC / 50 Hz
Output voltage:	10.2 ... 13.8 V DC (buffer operation)
Max. output current (total):	6 A (continuous operation)
Battery charging current:	1 A / 2 A - Jumper on JP1
Power:	72 W (continuous operation)
Number of outputs:	1
Main features:	<ul style="list-style-type: none">• LED indication• Efficiency : 90 % @ 70 W• Technical outputs of the OC type signaling loss of voltage at the PSU output (OUF) and loss of voltage in the 230V mains (ACF)• Main cable entries on the back of the enclosure• Raster module mounting system (compatible with ATTE devices) - 10.8 mm raster• Wall mounting• For indoor use• "Index of Protection" : IP20
Protections:	<ul style="list-style-type: none">• Short-circuit• Overload• Overvoltage• Overheat• Tamper• Reverse polarity connection• Discharge• Overcharge
Adapter operation control:	<ul style="list-style-type: none">• AC input voltage presence indication AC• DC output voltage presence indication DC• Battery charging indication (internal)
Place for battery:	12 V / 7 ... 18 Ah

DELTA-OPTI Monika Matysiak; <https://www.delta.poznan.pl>
POL; 60-713 Poznań; Graniczna 10
e-mail: delta-opti@delta.poznan.pl; tel: +(48) 61 864 69 60

Max. battery dimensions:	220 x 170 x 100 mm
Operation temp:	-25 ... 50 °C
Weight:	2.3 kg
Dimensions:	325 x 305 x 88 mm
Manufacturer / Brand:	ATTE
Guarantee:	3 years

PRESENTATION

Internal view:



Front view:



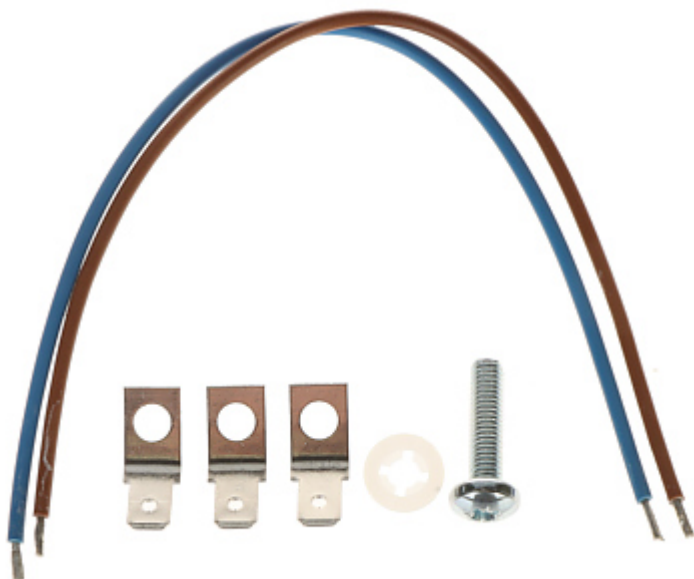
Mounting side view:



DELTA-OPTI Monika Matysiak; <https://www.delta.poznan.pl>
 POL; 60-713 Poznań; Graniczna 10
 e-mail: delta-opti@delta.poznan.pl; tel: +(48) 61 864 69 60



In the kit:



PACKAGE

Dimensions (L x W x H): 0x0x0 mm	Gross Weight: 0 kg
----------------------------------	--------------------