

Code: IPC-HUM8531M-V-LED-0360B

IP CAMERA **IPC-HUM8531M-V-LED-0360B** - 5 Mpx 3.6 mm DAHUA

Net: **379.31 EUR** Gross: **466.55 EUR**

A miniature IP camera with a mount that allows meter readings. Suitable for both indoor and outdoor use.

The camera has a built-in white light LED illuminator.

A light filtering system that reduces reflections (polarizing filters) and a heated glass (built-in heater) for quick removal of dirt ensure a clean and clear image.



SPECIFICATION

Standard:	TCP/IP
Sensor:	1/2.7 " Progressive Scan CMOS
Matrix size:	5 Mpx
Resolution:	2560 x 1920 - 5 Mpx , 2688 x 1520 - 4 Mpx , 2560 x 1440 - 3.7 Mpx , 2304 x 1296 - 3 Mpx , 1920 x 1080 - 1080p , 1280 x 960 - 1.3 Mpx 1280 x 720 - 720p
Lens:	3.6 mm
View angle:	79 °
White light LED illuminator range:	0.5 m
Min. illumination:	<ul style="list-style-type: none">• 0.02 Lux @ F2.0 / 30IRE (color),• 0.0002 Lux @ F2.0 / 30IRE (B/W)• 0 Lux @ LED
Audio:	<ul style="list-style-type: none">• Microphone built-in,• Audio detection
RS-485 interface:	—
RS-232 interface:	—
Alarm inputs / outputs:	—
Image compression method:	H.265+ / H.265 / H.264+ / H.264 / H.264H / H.264B / MJPEG

DELTA-OPTI Monika Matysiak; <https://www.delta.poznan.pl>
POL; 60-713 Poznań; Graniczna 10
e-mail: delta-opti@delta.poznan.pl; tel: +(48) 61 864 69 60

Main stream frame rate:	25 fps @ 5 Mpx
Network interface:	10/100 Base-T (RJ-45)
Network protocols:	IPv4/IPv6, HTTP, TCP, UDP, ARP, RTP, RTSP, RTCP, RTMP, SMTP, FTP, SFTP, DHCP, DNS, DDNS, QoS, UPnP, NTP, Multicast, ICMP, IGMP, NFS, PPPoE
ONVIF:	21.12
WEB Server:	✓
Max. number of on-line users:	20
Mobile phones support:	Port no.: 37777 or access by a cloud (P2P) <ul style="list-style-type: none"> • Android: Free application DMSS • iOS (iPhone): Free application DMSS
Default admin user / password:	admin / - The administrator password should be set at the first start
Default IP address:	192.168.1.108
Web browser access ports:	80, 37777
PC client access ports:	37777
Mobile client access ports:	37777
Port ONVIF:	80
RTSP URL:	rtsp://admin:haslo@192.168.1.108:554/cam/realmonitor?channel=1&subtype=0 - Main stream rtsp://admin:haslo@192.168.1.108:554/cam/realmonitor?channel=1&subtype=1 - Sub stream
Memory card slot:	Micro SD memory cards up to 256GB support (possible local recording)
Main features:	<ul style="list-style-type: none"> • WDR - 120 dB - Wide Dynamic Range • 3D-DNR - Digital Noise Reduction • ROI - improve the quality of selected parts of image • BLC - Back Light Compensation • HLC - High Light Compensation (spot) • Configurable Privacy Zones • Motion Detection • scene changing • video sabotage • Mirror - Mirror image • WB - White Balance (ATW/AWB/manual/indoor/outdoor) • AGC - Automatic Gain Control • Day/Night mode (color/b&w) • SSA - Smart Scene Adaptive - intelligent scene adaptation by automatically adjusting the exposure parameters to obtain a better image • Light filtering system (polarizing filters) effectively reduces the reflection of light to deliver clear image • Heated Glass quickly removes water, ice, snow and mist from the glass to keep the clear image (Heater built-in) • Mounting bracket included - Height adjustment
Housing:	Mini - Metal
"Index of Protection":	IP67
Color:	Black
Power supply:	<ul style="list-style-type: none"> • 12 V DC / 420 mA, • PoE (802.3af)
Power consumption:	max. 5.0 W @ 12 V max. 5.8 W @ PoE
Operation temp:	-40 °C ... 60 °C
Weight:	<ul style="list-style-type: none"> • 0.21 kg (camera) • 0.39 kg (with bracket)
Dimensions:	<ul style="list-style-type: none"> • 66 x 65 x 32 mm (camera) • 50 cm (cable length) • 150 x 70 x 88 mm (Bracket) • 70 ... 115 mm (Mounting hole diameter for the meter)

Supported languages:	English
Manufacturer / Brand:	DAHUA
Guarantee:	5 years

PRESENTATION



Mounting side view:



Side view:



Bottom view:

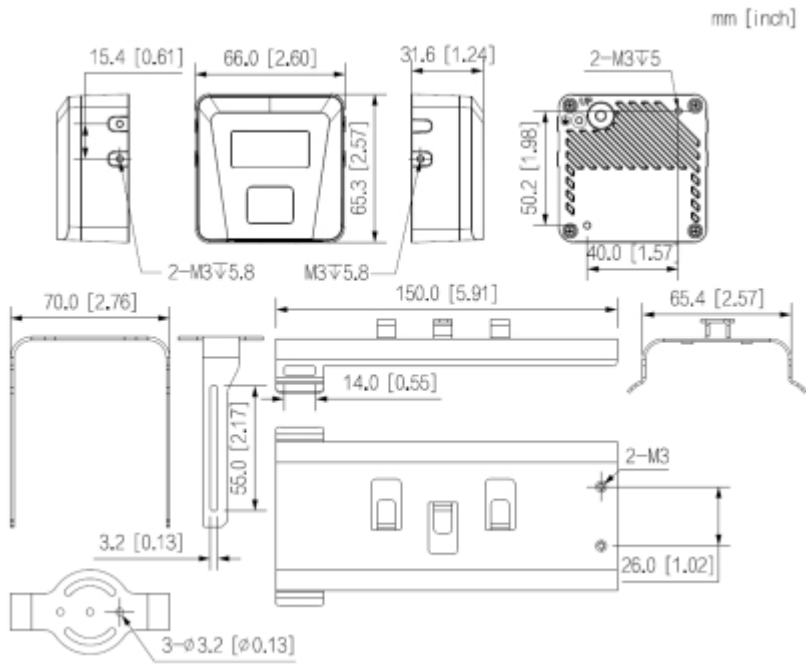


Camera connectors:



Camera and bracket dimensions:

DELTA-OPTI Monika Matysiak; <https://www.delta.poznan.pl>
POL; 60-713 Poznań; Graniczna 10
e-mail: delta-opti@delta.poznan.pl; tel: +(48) 61 864 69 60

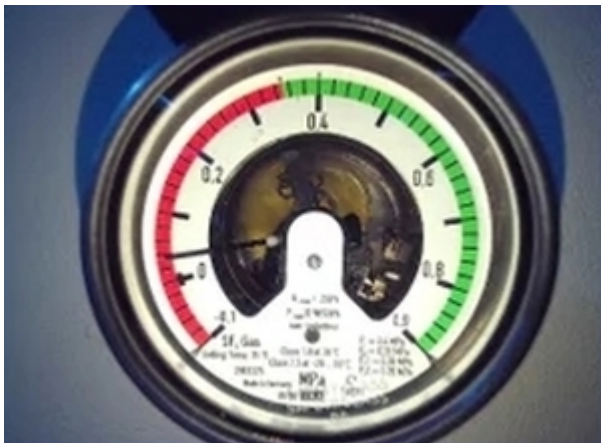


See how to initialize DAHUA cameras:

:
Example of application:



Example screenshots:
LED illuminator:



Without Illuminator:



In the kit:



OUR TESTS

Camera image at artificial illumination (about 30Lux):



Camera image at night conditions with internal built-in LED illuminator on:



Camera image at direct strong light opposite to camera:



PACKAGE

Dimensions (L x W x H): 0x0x0 mm	Gross Weight: 0 kg
----------------------------------	--------------------



DELTA-OPTI Monika Matysiak; <https://www.delta.poznan.pl>
POL; 60-713 Poznań; Graniczna 10
e-mail: delta-opti@delta.poznan.pl; tel: +(48) 61 864 69 60