

Code: APTI-250V2-28WP

IP CAMERA **APTI-250V2-28WP** - 1080p 2.8 mm

Net: **68.65 USD** Gross: **84.44 USD**



IP camera with efficient H.264 / H.265 image compression algorithm for clear and smooth video streaming at maximal resolution of 1080p.

PoE powering possibility, compatible with the 802.3af standard makes the device more universal and easier to install.

SPECIFICATION

Standard:	TCP/IP
Sensor:	1/2.8 " Sony CMOS IMX290 STARVIS Back-illuminated
Digital Image Processor:	Hisilicon 3516C
Matrix size:	2.1 Mpx
Resolution:	1920 x 1080 - 1080p
Operation modes:	The main and sub streams can only occur in the configurations shown below : Firmware 3516CV300_IMX290_TF_W_8.1.6.6 • Main stream : 1920 x 1080 + Sub stream : 720 x 576 + 352 x 288 • Main stream : 1920 x 1080 + Sub stream : 640 x 480 + 352 x 288
Lens:	2.8 mm, 3.0 Mpx
View angle:	• 85 ° (manufacturer data) • 107 ° (our tests result)
Range of IR illumination:	20 m
Memory card slot:	Micro SD memory cards up to 128GB support (possible local recording)
Audio:	—
Image compression method:	H.265 / H.264 / MJPEG
Alarm inputs / outputs:	—
Bitrate:	64 ... 12000 kbps
Main stream frame rate:	max. 30 fps - 1080p

DELTA-OPTI Monika Matysiak / VAT:PL5251295225 / 60-713 Poznań, ul. Graniczna 10
Tel:+48 61 864 69 60 / GSM:+48 607 60 11 66 / Fax:+48 61 864 69 65 / e-mail:shop@delta.poznan.pl
Monday-Friday: 8.00-19.00 / Saturday: 8.00-14.00

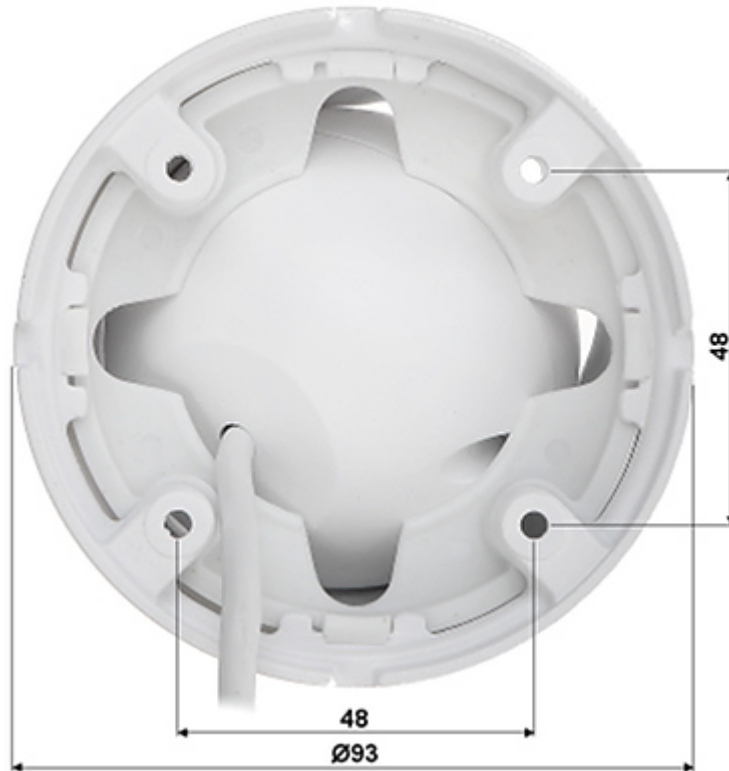
Network interface:	10/100 Base-T (RJ-45)
Network protocols:	TCP/IP, ICMP, HTTP, HTTPS, FTP, DHCP, DNS, DDNS, RTP, RTSP, RTCP, NTP, SMTP
WEB Server:	Built-in
Max. number of on-line users:	10
ONVIF:	2.4
Main features:	<ul style="list-style-type: none"> • HDR (High Dynamic Range) - the wide range of light dynamics provides a very good distinguishing of details on both the light and the dark areas of the image • 3D-DNR - Digital Noise Reduction • F-DNR (Defog) - Reduction of image noise caused by precipitation • ICR - Movable InfraRed filter • ISO+ - improve image quality when working at night conditions with active IR illuminator • Possibility to change the resolution, quality and bit rate • Motion Detection • Privacy zones • Mirror - Mirror image • Day/Night mode - configurable
Mobile phones support:	Port no.: 80 or access by a cloud (P2P) • Android: Free application FREEIP • iOS (iPhone): Free application FREEIP
Default IP address:	192.168.1.168
Default admin user / password:	admin / admin
Web browser access ports:	80
PC client access ports:	80
Mobile client access ports:	80
Port ONVIF:	80
RTSP URL:	rtsp://user:password@ip_address:80/0 - Main stream rtsp://user:password@ip_address:80/1 - Sub stream
Color:	White
Power supply:	<ul style="list-style-type: none"> • PoE (802.3af), • 12 V DC / 370 mA
Power consumption:	≤ 4.5 W
Housing:	Dome - Metal
"Index of Protection":	IP66
Operation temp:	-20 °C ... 55 °C
Dimensions:	Ø 93 x 71 mm
Weight:	0.31 kg
Supported languages:	English, Bulgarian, Czech, French, Spanish, Dutch, German, Polish, Portuguese, Russian, Turkish, Italian
Manufacturer / Brand:	APTI
Guarantee:	2 years

PRESENTATION

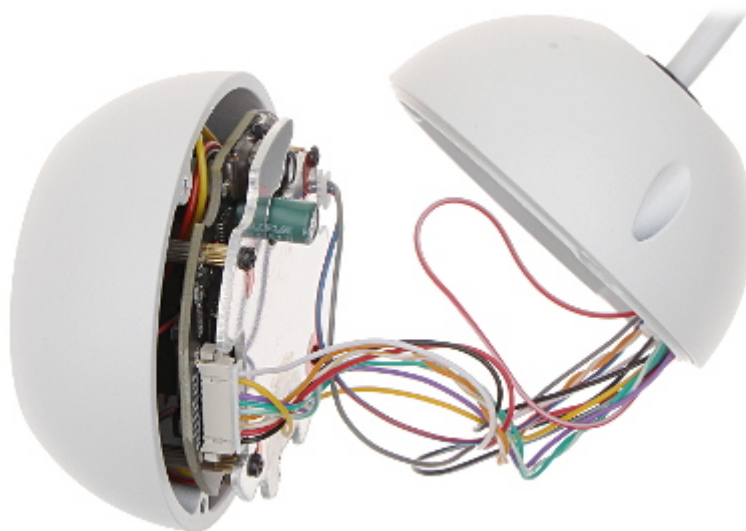
Camera is out from clamping ring:



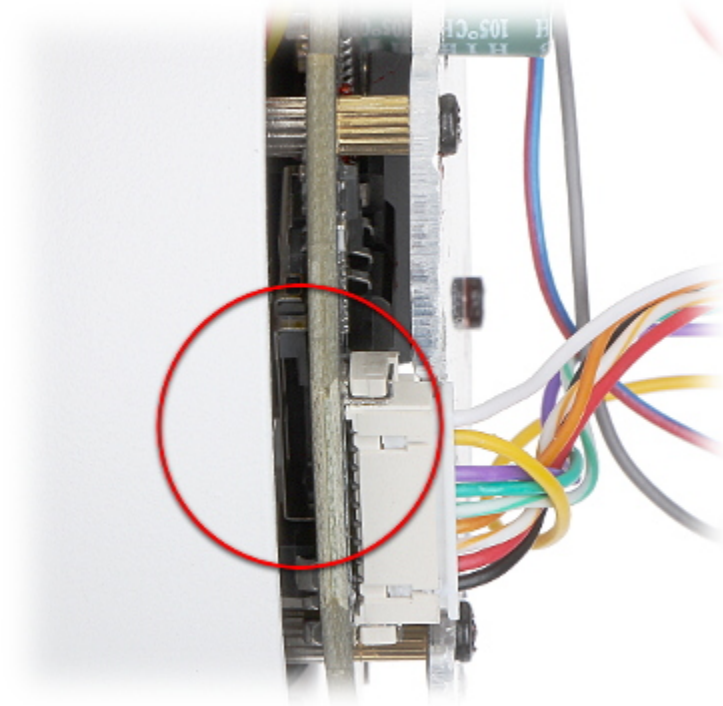
Mounting side view:



Internal view of the housing:



Memory card slot:



In the kit:



Configuration and operation of the FreeIP cloud:

:

OUR TESTS

Camera image at artificial illumination (about 30Lux):



Camera image at night conditions with internal built-in IR illuminator on:



Camera image at direct strong light opposite to camera:



PACKAGE

Dimensions (L x W x H): 110x110x85 mm	Gross Weight: 0.41 kg
---------------------------------------	-----------------------



DELTA-OPTI Monika Matysiak / VAT:PL5251295225 / 60-713 Poznań, ul. Graniczna 10
Tel:+48 61 864 69 60 / GSM:+48 607 60 11 66 / Fax:+48 61 864 69 65 / e-mail:shop@delta.poznan.pl
Monday-Friday: 8.00-19.00 / Saturday: 8.00-14.00