

Code: IPC-HDW1531S-0360B

IP CAMERA **IPC-HDW1531S-0360B** - 5.0 Mpx 3.6 mm DAHUA

Net: **168.49 EUR** Gross: **207.24 EUR**



IP camera with efficient H.264 / H.265 image compression algorithm for clear and smooth video streaming at maximal resolution of 2592 x 1944 (5.0 MPx).

PoE powering possibility, compatible with the 802.3af standard makes the device more universal and easier to install.

SPECIFICATION

| | |
|---------------------------|--|
| Standard: | TCP/IP |
| Sensor: | 1/2.7 " Progressive Scan CMOS |
| Scanning system: | Progressive |
| Matrix size: | 5.0 Mpx |
| Resolution: | 2592 x 1944 - 5.0 Mpx , 2688 x 1520 - 4.0 Mpx , 2304 x 1296 - 3.0 Mpx , 1920 x 1080 - 1080p 1280 x 1024 - 1.4 Mpx , 1280 x 960 - 1.3 Mpx , 1280 x 720 - 720p |
| Lens: | 3.6 mm |
| View angle: | 78 ° |
| Range of IR illumination: | 30 m |
| S/N ratio: | > 50 dB |
| Memory card slot: | <input checked="" type="checkbox"/> |
| Image compression method: | H.265 / H.265+ / H.264 / H.264+ / MJPEG |
| Alarm inputs / outputs: | <input checked="" type="checkbox"/> |
| Audio: | <input checked="" type="checkbox"/> |
| Bitrate: | 32 ... 10240 kbps - H.264 12 ... 8448 kbps - H.265 |

DELTA-OPTI Monika Matysiak; <https://www.delta.poznan.pl>
POL; 60-713 Poznań; Graniczna 10
e-mail: delta-opti@delta.poznan.pl; tel: +(48) 61 864 69 60

| | |
|--------------------------------|---|
| Main stream frame rate: | 15 fps @ 5.0 Mpx 25 fps @ 3.0 Mpx |
| Network interface: | 10/100 Base-T (RJ-45) |
| Network protocols: | HTTP, HTTPS, TCP, ARP, RTSP, RTP, UDP, SMTP, FTP, DHCP, DNS, DDNS, PPPoE, IPv4/IPv6, QoS, UPnP, NTP, Bonjour, IEEE 802.1x, Multicast, ICMP, IGMP |
| WEB Server: | Built-in |
| Max. number of on-line users: | 20 |
| ONVIF: | 16.12 |
| Main features: | <ul style="list-style-type: none"> • WDR - 120 dB - Wide Dynamic Range • 3D-DNR - Digital Noise Reduction • ROI - improve the quality of selected parts of image • BLC/HLC - Back Light / High Light Compensation • Possibility to change the resolution, quality and bit rate • Motion Detection • Configurable Privacy Zones • D-ZOOM - Digital Zoom • Mirror - Mirror image • IVS analysis : intrusion, crossing the line (tripwire) |
| Mobile phones support: | Port no.: 37777 or access by a cloud (P2P) <ul style="list-style-type: none"> • Android: Darmowa aplikacja gDMSS Plus • iOS (iPhone): Darmowa aplikacja iDMSS Plus |
| Default IP address: | 192.168.1.108 |
| Default admin user / password: | admin / - The administrator password should be set at the first start |
| Web browser access ports: | 80, 37777 |
| PC client access ports: | 37777 |
| Mobile client access ports: | 37777 |
| Port ONVIF: | 80 |
| RTSP URL: | rtsp://admin:hasło@192.168.1.108:554/cam/realmonitor?channel=1&subtype=0 - Main stream rtsp://admin:hasło@192.168.1.108:554/cam/realmonitor?channel=1&subtype=1 - Sub stream |
| Color: | White |
| Power supply: | <ul style="list-style-type: none"> • PoE (802.3af), • 12 V DC / 330 mA |
| Power consumption: | < 4 W |
| Housing: | Dome - Metal / Plastic |
| "Index of Protection": | IP67 |
| Operation temp: | -30 °C ... 60 °C |
| Dimensions: | Ø 108 x 85 mm |
| Weight: | 0.27 kg |
| Supported languages: | English, Polish |
| Manufacturer / Brand: | DAHUA |
| Guarantee: | 3 years |

PRESENTATION

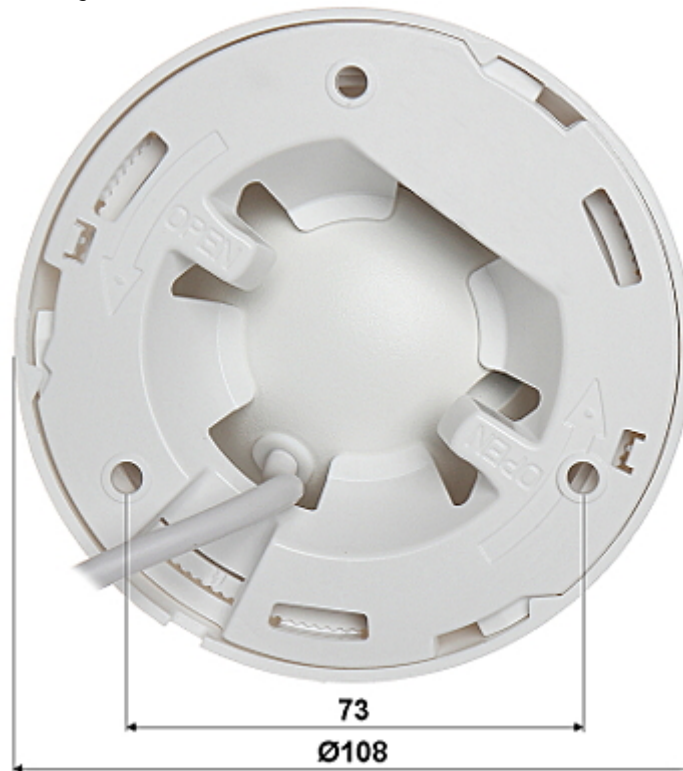


DELTA-OPTI Monika Matysiak; <https://www.delta.poznan.pl>
 POL; 60-713 Poznań; Graniczna 10
 e-mail: delta-opti@delta.poznan.pl; tel: +(48) 61 864 69 60

Camera is out from clamping ring:



Mounting side view:



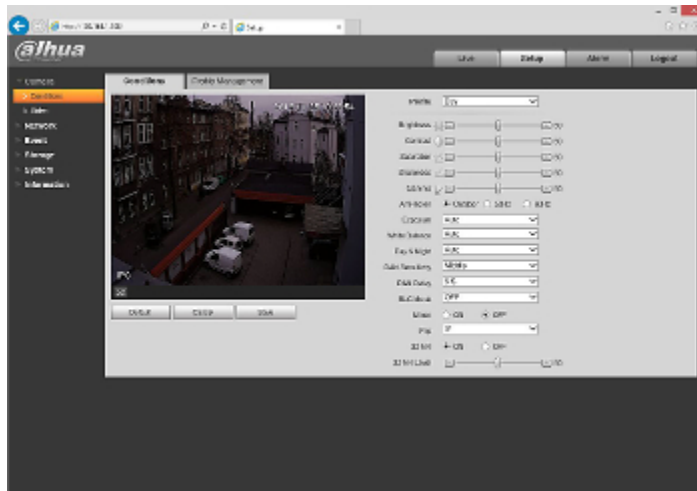
See how to initialize DAHUA cameras:

:

In the kit:



Example captures of device interface:



OUR TESTS

Camera image at artificial illumination (about 30Lux):



Camera image at night conditions with internal built-in IR illuminator on:



Camera image at direct strong light opposite to camera:

