

Code: IPC-HDW3841EM-AS-0280B

IP CAMERA **IPC-HDW3841EM-AS-0280B** - 8.3 Mpx 4K UHD 2.8 mm DAHUA

Net: **289.13 EUR** Gross: **355.63 EUR**



IP camera with efficient H.264 / H.265 image compression algorithm for clear and smooth video streaming at maximal resolution of 8.3 MPx, 4K UHD.

PoE powering possibility, compatible with the 802.3af standard makes the device more universal and easier to install. The range of IR illumination according to the manufacturer data, depends on outer conditions (visibility - air transparency, environment, wall colors ie. scene reflectance).

The camera has extensive functions of intelligent image analysis.

SPECIFICATION

| | |
|---------------------------|--|
| Standard: | TCP/IP |
| Sensor: | 1/2.8 " Progressive Scan CMOS |
| Matrix size: | 8.3 Mpx |
| Resolution: | 3840 x 2160 - 8.3 Mpx 4K UHD , 3072 x 2048 - 6 Mpx , 3072 x 1728 - 5 Mpx , 2592 x 1944 - 5 Mpx , 2688 x 1520 - 4 Mpx , 2048 x 1536 - 3 Mpx , 2304 x 1296 - 3 Mpx , 1920 x 1080 - 1080p , 1280 x 960 - 1.3 Mpx , 1280 x 720 - 720p |
| Lens: | 2.8 mm |
| View angle: | <ul style="list-style-type: none">• 108 ° (manufacturer data)• 102 ° (our tests result) |
| Range of IR illumination: | 30 m |
| Memory card slot: | Micro SD memory cards up to 256GB support (possible local recording) |
| Image compression method: | H.265+ / H.265 / H.264+ / H.264 / MJPEG |
| Alarm inputs / outputs: | — |
| Audio: | <ul style="list-style-type: none">• Microphone built-in• Audio detection |
| Main stream frame rate: | 20 fps @ 8.3 Mpx 25 fps @ 5 Mpx |



DELTA-OPTI Monika Matysiak; <https://www.delta.poznan.pl>
POL; 60-713 Poznań; Graniczna 10
e-mail: delta-opti@delta.poznan.pl; tel: +(48) 61 864 69 60

| | |
|--------------------------------|--|
| Network interface: | 10/100 Base-T (RJ-45) |
| Network protocols: | IPv4/IPv6, HTTP, TCP, UDP, ARP, RTP, RTSP, RTCP, RTMP, SMTP, FTP, SFTP, DHCP, DNS, DDNS, QoS, UPnP, NTP, Multicast, ICMP, IGMP, NFS, SAMBA, PPPoE, SNMP |
| WEB Server: | Built-in |
| Max. number of on-line users: | 20 |
| ONVIF: | 20.06 |
| Main features: | <ul style="list-style-type: none"> • WDR - 120 dB - Wide Dynamic Range • 3D-DNR - Digital Noise Reduction • ROI - improve the quality of selected parts of image • SSA - Smart Scene Adaptive - intelligent scene adaptation by automatically adjusting the exposure parameters to obtain a better image • BLC/HLC - Back Light / High Light Compensation • Possibility to change the resolution, quality and bit rate • Audio detection • Motion Detection • Configurable Privacy Zones • Mirror - Mirror image • IVS analysis : intrusion, crossing the line (tripwire) - classification of people and vehicles |
| Mobile phones support: | Port no.: 37777 or access by a cloud (P2P) <ul style="list-style-type: none"> • Android: Free application DMSS • iOS (iPhone): Free application DMSS |
| Default IP address: | 192.168.1.108 |
| Default admin user / password: | admin / - The administrator password should be set at the first start |
| Web browser access ports: | 80, 37777 |
| PC client access ports: | 37777 |
| Mobile client access ports: | 37777 |
| Port ONVIF: | 80 |
| RTSP URL: | rtsp://admin:haslo@192.168.1.108:554/cam/realmonitor?channel=1&subtype=0 - Main stream rtsp://admin:haslo@192.168.1.108:554/cam/realmonitor?channel=1&subtype=1 - Sub stream |
| Power supply: | <ul style="list-style-type: none"> • PoE (802.3af), • 12 V DC / 600 mA |
| Power consumption: | <ul style="list-style-type: none"> • ≤ 6.9 W @ 12 V DC • ≤ 7.9 W @ PoE |
| Housing: | Dome - Metal |
| Color: | White |
| "Index of Protection": | IP67 |
| Operation temp: | -40 °C ... 60 °C |
| Weight: | 0.53 kg |
| Dimensions: | Ø 106 x 94 mm |
| Supported languages: | Polish, English, Czech, French, Spanish, Dutch, German, Portuguese, Russian, Romanian, Turkish, Ukrainian, Hungarian, Italian |
| Manufacturer / Brand: | DAHUA |
| Guarantee: | 3 years |

PRESENTATION



DELTA-OPTI Monika Matysiak; <https://www.delta.poznan.pl>
 POL; 60-713 Poznań; Graniczna 10
 e-mail: delta-opti@delta.poznan.pl; tel: +(48) 61 864 69 60

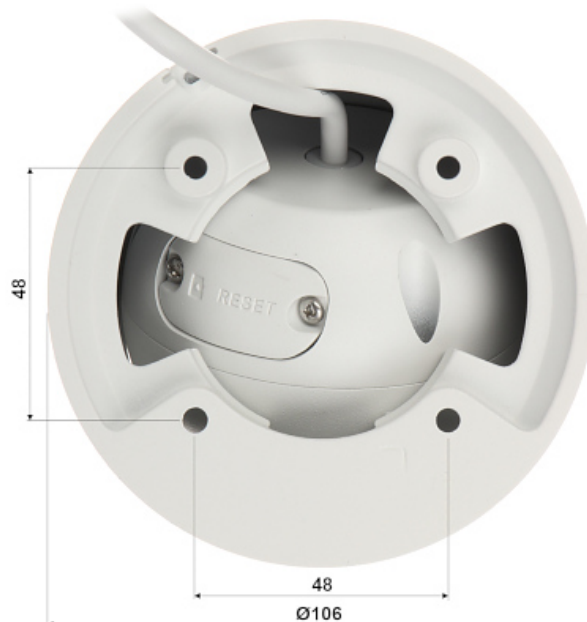
Camera is out from clamping ring:



Memory card slot and "Reset" button:



Mounting dimensions:



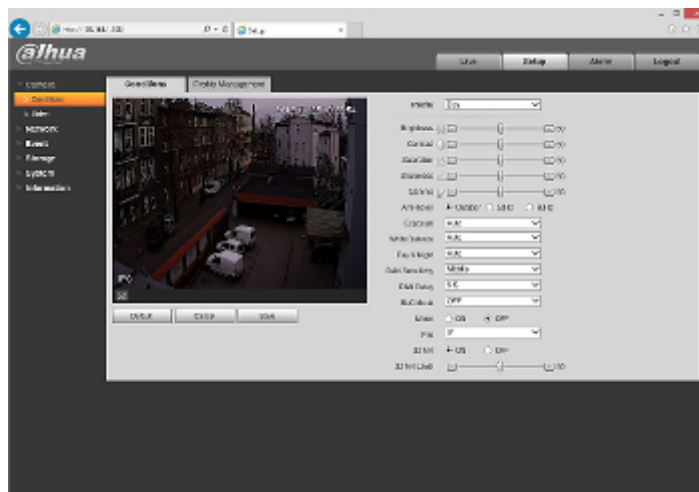
See how to initialize DAHUA cameras:

:

In the kit:



Example captures of device interface:



OUR TESTS

DELTA-OPTI Monika Matysiak; <https://www.delta.poznan.pl>
POL; 60-713 Poznań; Graniczna 10
e-mail: delta-opti@delta.poznan.pl; tel: +(48) 61 864 69 60

Camera image at artificial illumination (about 30Lux):



Camera image at night conditions with internal built-in IR illuminator on:



Camera image at direct strong light opposite to camera:

