

Code: CS-H7-70H

**MULTI-FUNCTIONAL CCTV TESTER CS-H7-70H**Net: **542.97 EUR** Gross: **667.85 EUR**

Multi-functional tester of AHD, HD-CVI, HD-TVI, IP cameras, analog cameras, Speed Dome (PTZ) cameras has implemented many additional functions, necessary during initialization of the CCTV installation system.

**SPECIFICATION**

Video standard:	<ul style="list-style-type: none"> <li>• AHD - 8 Mpx,</li> <li>• HD-CVI - 8 Mpx,</li> <li>• HD-TVI - 8 Mpx,</li> <li>• TCP/IP - 4K,</li> <li>• CVBS - PAL / NTSC</li> </ul>
Display:	7 " - capacitive touch screen, 1280 x 800 px
Video input:	<ul style="list-style-type: none"> <li>• 1 pcs AHD / HD-CVI / HD-TVI / CVBS - BNC socket</li> <li>• 1 pcs HDMI</li> </ul>
Video output:	<ul style="list-style-type: none"> <li>• 1 pcs CVBS - BNC socket</li> <li>• 1 pcs HDMI</li> </ul>
Port LAN:	2 pcs - PoE cameras and switches support
Audio input:	1 pcs Mini Jack
Audio output:	1 pcs Mini Jack
Video signal level meter:	—
Video signal generator:	<ul style="list-style-type: none"> <li>• Test signal generator</li> <li>• Generating eight color bars in PAL / NTSC standards</li> <li>• It is possible to generate a blue or black screen</li> </ul>
Serial ports:	RS-485
Protocols:	Support for over 30 RS485 protocols : Pelco-D, Pelco-P, YAAN, YAAN-O, YAAN-1, SAMSUNG, PANASONIC, Lilin-FAST, Lilin-MLP2, MOLYNX, MINKING A01, Fastrax, CBC, LC-NEW, WV-CS850, SONY-EVI, LG-MULTIX, DAT-SD, VICON, Vcltp, DH-YTC 06, Santachi, Bosch OSRD, TeleEye DM2, HD 600, Hikvision, KALATEL ASC, AD 168(M-B), SAMSUNG SPD, Siemens, Cohu, MINKING B01, ALEC
Baud rates:	150, 300, 600, 1200, 2400, 4800, 9600, 19200, 38400, 115200 b/s
LAN (twisted-pair) or telephone cables testing:	UTP cables or phone lines connecting test with RJ-45 connectors
RS-485, RS-232 lines test:	Data analysis from control device (the commands are displayed in hexadecimal)
Wi-Fi Module:	2.4 GHz
Identification the wire in the group of wires:	—
Audio test:	✓

DELTA-OPTI Monika Matysiak; <https://www.delta.poznan.pl>  
 POL; 60-713 Poznań; Graniczna 10  
 e-mail: [delta-opti@delta.poznan.pl](mailto:delta-opti@delta.poznan.pl); tel: +(48) 61 864 69 60

Digital multimeter:	—
Optical power measurement:	—
VLS (VFL) - Visual Fault Locator of fiber cable:	—
TDR reflectometer:	Detecting and locating a cable break (UTP only)
Operation as power source:	<ul style="list-style-type: none"> <li>• 12 V DC / 3 A</li> <li>• 24 V DC / 2 A</li> <li>• 5 V DC / 2 A from USB port</li> <li>• 48 V (PoE, LAN), 24 W</li> </ul>
Battery power supply:	<ul style="list-style-type: none"> <li>• Battery 7500 mAh</li> <li>• 12 V DC / 2 A (power adapter included)</li> </ul>
Estimated battery operation time:	max. 10 hours
Operation:	Graphical menu - touch control and by using the buttons
Main features:	<ul style="list-style-type: none"> <li>• AHD cameras test</li> <li>• HD-CVI cameras test</li> <li>• HD-TVI cameras test</li> <li>• PAL/NTSC cameras test</li> <li>• IP cameras test - Supported image compression methods : H.265, H.264, MJPEG</li> <li>• Searching and view of IP cameras compatible with Onvif</li> <li>• Virtual IPC</li> <li>• Bitrate calculator</li> <li>• DH test tool</li> <li>• Hik test tool</li> <li>• UNV Test Tool</li> <li>• HuaWei Tool</li> <li>• Motor units and PTZ (Speed Dome) cameras control</li> <li>• IP cameras view from embedded applications - iVMS-4500 HD, EZView, gDMSS HD Lite, XMEye, MEye, Fseye</li> <li>• Embedded Internet browser - Google Chrome</li> <li>• Test signal generator</li> <li>• LAN connections monitoring</li> <li>• IP addresses scanner</li> <li>• PING - test the link using ICMP packets</li> <li>• Detection of the connected port in switch</li> <li>• LAN (twisted-pair) cables testing</li> <li>• PoE cameras and switches support</li> <li>• PoE power meter</li> <li>• DC 5V / 12V / 48V power source</li> <li>• Data monitor - serial port data analysis RS-485</li> <li>• Audio test</li> <li>• Hotspot - Wi-Fi</li> <li>• Video recording to micro SD card with playback possibility - 8 GB included</li> <li>• Playback the records</li> <li>• Calculator</li> <li>• Flashlight built-in</li> </ul>
Operation temp:	-10 °C ... 50 °C
Permissible relative humidity:	30 % ... 90 %
Weight:	0.94 kg
Dimensions:	242 x 157 x 46 mm
Supported languages:	Polish, English, Czech, French, Spanish, German, Portuguese, Russian, Serbian, Turkish, Italian
Guarantee:	2 years

## PRESENTATION

Front panel (main menu options visible):



DELTA-OPTI Monika Matysiak; <https://www.delta.poznan.pl>  
POL; 60-713 Poznań; Graniczna 10  
e-mail: delta-opti@delta.poznan.pl; tel: +(48) 61 864 69 60



Connectors:



Rear view:



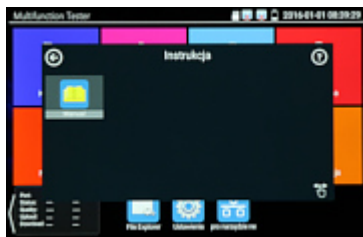
Battery view after open the cover:



Main menu:



DELTA-OPTI Monika Matysiak; <https://www.delta.poznan.pl>  
POL; 60-713 Poznań; Graniczna 10  
e-mail: delta-opti@delta.poznan.pl; tel: +(48) 61 864 69 60



DELTA-OPTI Monika Matysiak; <https://www.delta.poznan.pl>  
POL; 60-713 Poznań; Graniczna 10  
e-mail: delta-opti@delta.poznan.pl; tel: +(48) 61 864 69 60





In the kit:



The tester with accessories housed in a handy bag:



## OUR TESTS

See the possibilities of the CS-H7F-70HQ:

:

## OUR OPINIONS

DELTA-OPTI Monika Matysiak; <https://www.delta.poznan.pl>  
POL; 60-713 Poznań; Graniczna 10  
e-mail: delta-opti@delta.poznan.pl; tel: +(48) 61 864 69 60



- Everything you need to work is the compact, small, universal device.
- Perfect to build and create the CCTV system.

#### PACKAGE

Dimensions (L x W x H): 0x0x0 mm	Gross Weight: 0 kg
----------------------------------	--------------------

