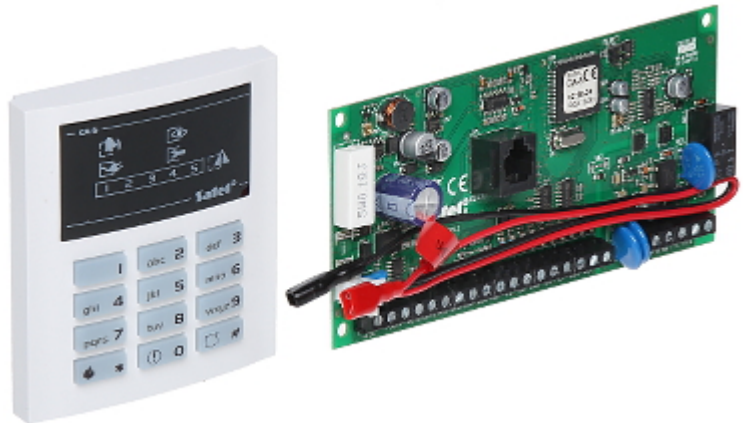


Code: CA-5-KPL-LED-S

ALARM KIT **CA-5-KPL-LED-S** SATEL

Net: 253.00 PLN Gross: 311.19 PLN

The CA-5-KPL-LED-S control panel is intended for security of small facilities which do not require future expansion options of the system. The control panel can cooperate with external GSM/GPRS communication modules.



SPECIFICATION

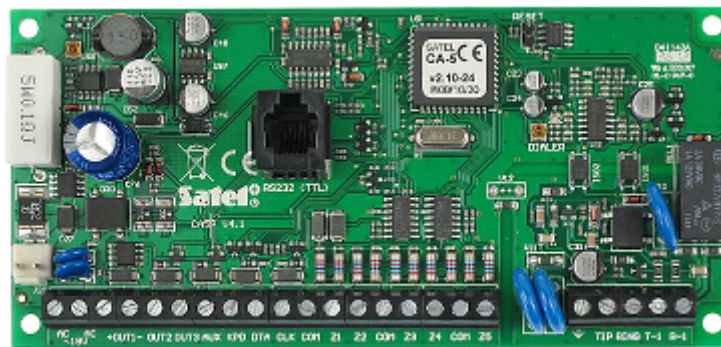
Mainboard inputs:	5 pcs
Mainboard outputs:	3 pcs
Maximal number of supported inputs:	5 pcs
Maximal number of supported outputs:	3 pcs
Current-carrying capacity, low-current programmable outputs:	50 mA
Current-carrying capacity, high-current programmable outputs (+/-10%):	1.1 A - 1 pcs
Maximal load:	1.2 A
Users + admins:	5 + 1
Partitions:	<input type="checkbox"/>
Zones:	<input type="checkbox"/>
Expansion modules:	<input type="checkbox"/>
Events memory:	255
Timers:	<input type="checkbox"/>
Supported keypads:	max. 3 pcs
Supporting the wireless ABAX system via bus:	<input type="checkbox"/>
Keyboard included:	1 pcs CA-5-KLED-S
PIR detectors included:	<input type="checkbox"/>
Expander included :	<input type="checkbox"/>
Enclosure included:	<input type="checkbox"/>
Protection class (Grade):	<input type="checkbox"/>
Power supply:	18 V AC
Operation temp:	-10 °C ... 55 °C
Permissible relative humidity:	93 %

DELTA-OPTI Monika Matysiak; <https://www.delta.poznan.pl>
POL; 60-713 Poznań; Graniczna 10
e-mail: delta-opti@delta.poznan.pl; tel: +(48) 61 864 69 60

Dimensions:	<ul style="list-style-type: none"> • 148 x 70 mm - PCB • 80 94 22 mm - LED keyboard
Weight:	0.18 kg (total)
Supported languages:	Polish
Manufacturer / Brand:	SATEL
Guarantee:	2 years

PRESENTATION

Control panel mainboard:



The keypad with LED included in the kit:



Internal view:



In the kit:

