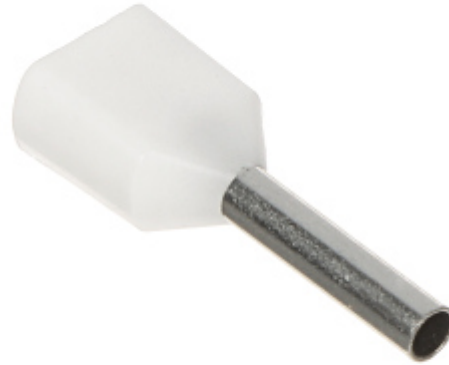


Code: TUL-2X0.5/8/DIN-W*P100

DOUBLE CABLE FERRULE TUL-2X0.5/8/DIN-W*P100

Net: 2.36 EUR Gross: 2.36 EUR

Cable ferrules are designed for clamping on the stranded wires to keep all loose cable wires together and reduce the risk of a short circuit.



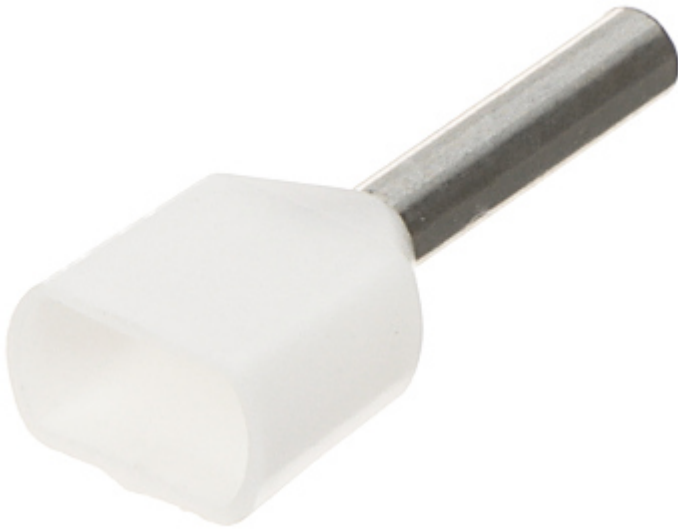
SPECIFICATION

In package:	100 pcs The price for package
Cross section:	2 x 0.5 mm ² / AWG 20
Contact material:	Cu / Indoor coverage area Sn
Insulation:	polyamide 6.6
Application:	Stranded wires
Color:	White
Dimensions:	3.1 x 5.3 x 14.8 mm
Guarantee:	2 years

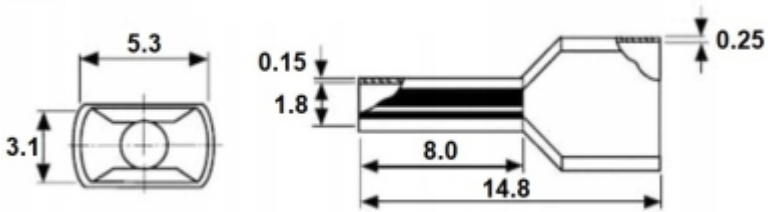
PRESENTATION



DELTA-OPTI Monika Matysiak; <https://www.delta.poznan.pl>
POL; 60-713 Poznań; Graniczna 10
e-mail: delta-opti@delta.poznan.pl; tel: +(48) 61 864 69 60



Dimensions:
mm



Package:



PACKAGE

DELTA-OPTI Monika Matysiak; <https://www.delta.poznan.pl>
POL; 60-713 Poznań; Graniczna 10
e-mail: delta-opti@delta.poznan.pl; tel: +(48) 61 864 69 60

Dimensions (L x W x H): 0x0x0 mm	Gross Weight: 0 kg
----------------------------------	--------------------

