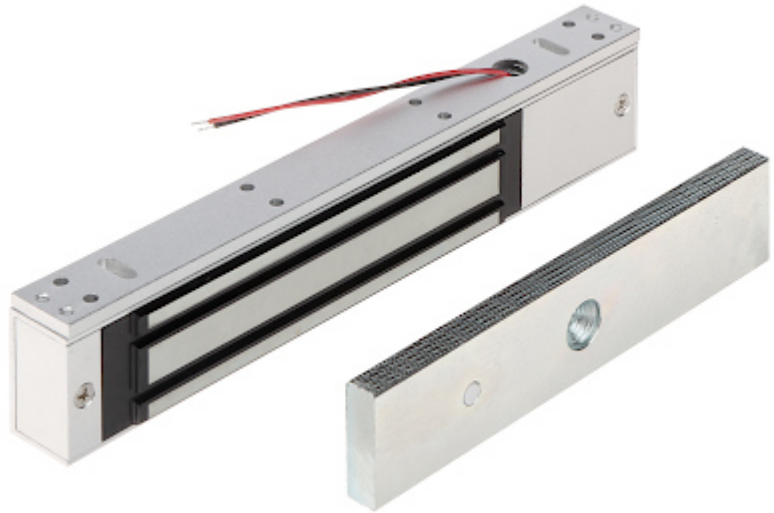


Code: ZE-280-5T

## ELECTROMAGNETIC LOCK **ZE-280-5T**

Electromagnetic lock, surface, single. With a simple design and modern manufacturing technology, is a reliable device to lock doors and gates. Force an entry closed by lock requires the use of force of > 280 kg. It operates reversibly - it is open when power is off. The lock is composed of two elements: electromagnet (usually mounted in the frame) and lock plate (usually mounted in the door). Error free operation of the lock is a result of lack the mechanical elements, which after some time become damaged. Device is designed for indoor use only.



Load capacity:	280 kg
Rated voltage:	12 V DC / 24 V DC
Current consumption:	500 mA / 250 mA
Main features:	<ul style="list-style-type: none"> <li>• LED indication,</li> <li>• The NO/NC output indicating opening the door,</li> <li>• Adjustable delay of closing the lock : 0 s ... 32 s - Precision potentiometer adjustment</li> </ul>
Weight:	1.73 kg (total)
Dimensions:	<ul style="list-style-type: none"> <li>• 250 x 47 x 28 mm (electromagnetic lock)</li> <li>• 180 x 38 x 12 mm (metal plate)</li> </ul>
Guarantee:	2 years