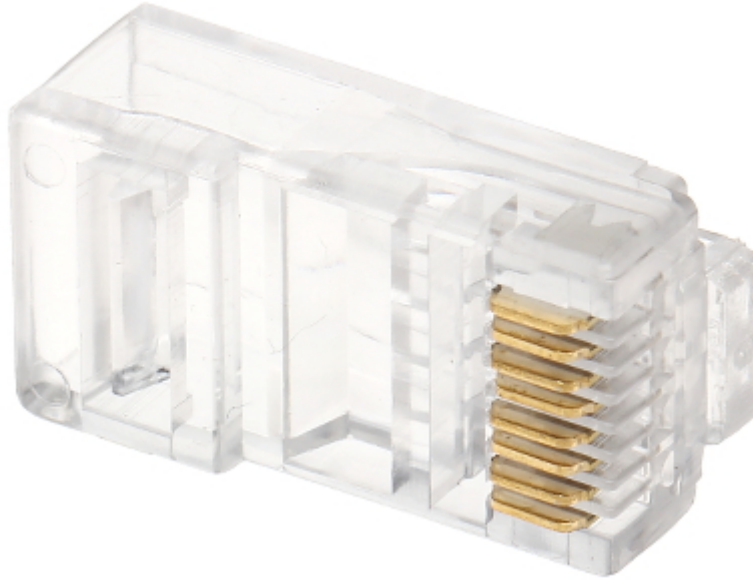


Code: RJ45/L6\*P50

## MODULAR PLUG **RJ45/L6\*P50**



<b>In package:</b>	<b>50 pcs The price for package</b>
Connector type:	RJ-45 - Plug, 8 pin
Attachment of connector elements:	Crimping
Wire mounting:	Clamping on each wire with 2-pin edge
Application:	Twisted-pair cable
Material:	PET
Example of application:	UTP cat. 6
Main features:	<ul style="list-style-type: none"><li>• Very easy and quick assembly</li><li>• To crimp use the crimping tool</li></ul>