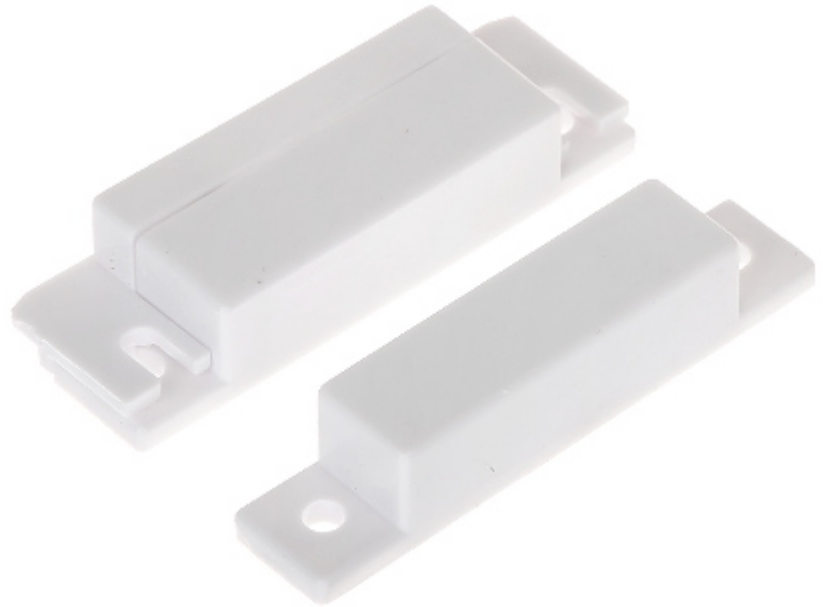


Code: KN-CA31*P10

SIDE MAGNETIC CONTACT **KN-CA31*P10**

The magnetic contacts can be used wherever required for controlling the status of doors, windows and/or other movable elements, e.g. for protection or monitoring of access to particular sites, spaces, facilities, in automatic control systems, etc.

The contact is designed for surface mounting.



In package:	10 pcs The price for package
Detection:	Opening the door or window
Maximum reed switched voltage:	20 V
Maximal switched current:	20 mA
Make distance:	18 mm
Break distance:	28 mm
Main features:	<ul style="list-style-type: none"> • Plastic (ABS) • NC output - a magnet close to a reed switch - does not trigger an alarm, the contacts are closed • Connectors : screw terminals • Leads out the cables : On the long edge
Color:	White
Weight:	0.02 kg
Dimensions:	63.9 x 19.7 x 12.9 mm - Reed switch 64.2 x 13.0 x 12.9 mm - magnet
Guarantee:	2 years