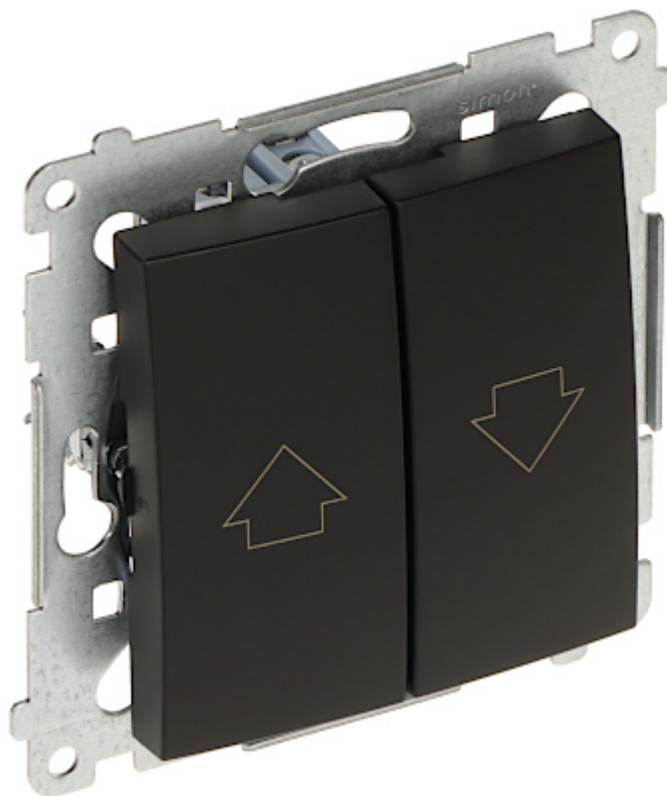


Code: DZP1A.01/49-SIMON54

ROLLER BLIND BUTTON **DZP1A.01/49-SIMON54** 250 V 16 A

Single roller blind button is designed to fix with frame plates of the Simon 54 Nature, Simon 54 Premium series.



Device type:	Roller Blind Button (monostable)
Rated voltage:	250 V AC
Rated current:	16 A
Connectors type:	screw terminals
Application:	Flush-mounted, Simon 54 product series, for Nature, Premium frames
Backlight:	—
Assembly:	Claw or screw mounting
Main features:	<ul style="list-style-type: none"> • Installation of roller blind buttons requires additional wiring • Pictogram
"Index of Protection":	IP20 / IP44 (using frame seal)
Housing:	Non-halogen plastic, PC
Color:	Matt black
Weight:	0.062 kg



DATA SHEET

Dimensions:	<ul style="list-style-type: none">• 75 x 75 x 45 mm• 33 mm - mounting depth
Manufacturer / Brand:	KONTAKT Simon
Guarantee:	6 years

