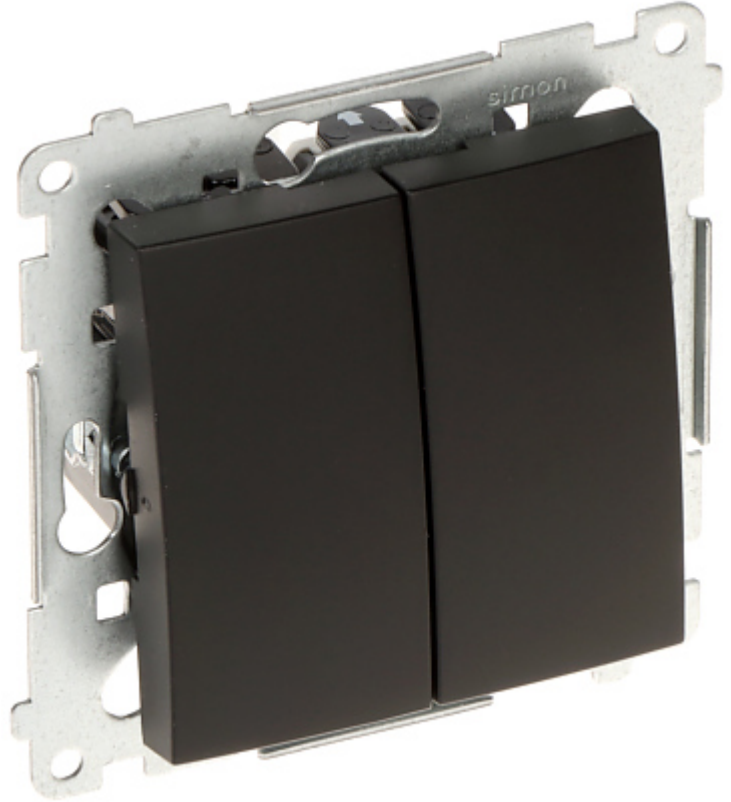


Code: DW7/2.01/X/49-SIMON54

DOUBLE INTERMEDIATE SWITCH **DW7/2.01/X/49-SIMON54** 250 V 10 A

The double intermediate switch is designed to fix with frame plates of the Simon 54 Nature, Simon 54 Premium series.



Device type:	Double Intermediate Switch (bistable)
Rated voltage:	250 V AC
Rated current:	10 A (inductive load)
Connectors type:	Quick-connector
Application:	Flush-mounted, Simon 54 product series, for Nature, Premium frames
Backlight:	—
Assembly:	Claw or screw mounting
"Index of Protection":	IP20 / IP44 (using frame seal)
Housing:	Non-halogen plastic, PC
Color:	Matt black
Weight:	0.07 kg
Dimensions:	<ul style="list-style-type: none"> • 75 x 75 x 41 mm • 26 mm - mounting depth
Manufacturer / Brand:	KONTAKT Simon



DATA SHEET

Guarantee:	6 years
------------	---------