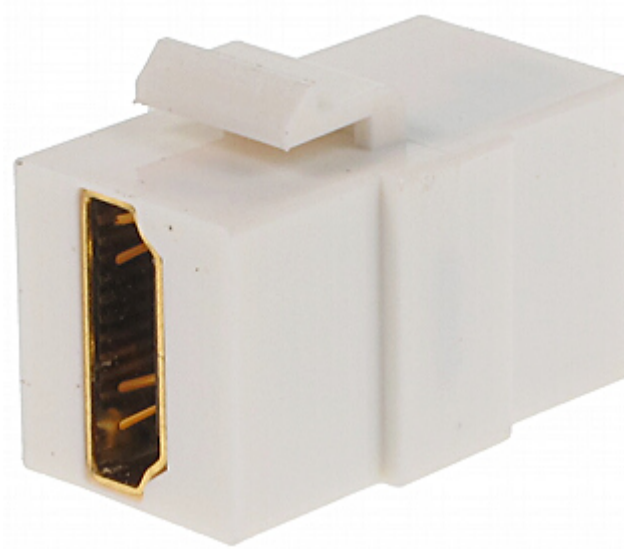


Code: FX-HDMI2

## KEYSTONE CONNECTOR **FX-HDMI2**



Connector type:	Adapter HDMI Socket / HDMI Socket
Application:	Patch panel Keystone
Material:	Metal / PET
Main features:	<ul style="list-style-type: none"><li>• HDMI 1.3</li><li>• Very easy and quick assembly</li><li>• Corrosion resistance</li><li>• Keystone assembly standard</li></ul>
Weight:	0.006 kg
Dimensions:	29 x 22 x 17 mm
Guarantee:	2 years