

Warning!

Please read the user manual included in this work as it contains important information related with safety of installation and use of the device.

Only persons who read the user manual may use the device.

The user manual must be kept because it may be required in the future. The device is to be used exclusively for purposes specified in this user manual.

The device must be unpacked prior to starting-up. After removing the packaging make sure the device is in working order. If the product has defects, it should not be used until it is repaired.

The product is intended for use at home and commercial use and may not be used for other than intended use.

The manufacturer is not liable for damages resulting from not adhering to the rules contained in the user manual, therefore, we recommend to follow the aforementioned safety rules for operation and maintenance of the device. In this way you will ensure yourself safety and avoid causing damage to the device.

The manufacturer and the supplier are not liable for losses or damages arising out of the product, including financial or intangible losses, loss of profits, income, data, pleasure from use of the product or other products related with it - indirect, incidental or consequential loss or damage. The above provisions apply whether the loss or damage concerns:

1. Deterioration of quality or the lack of operation of the products or products related with it due to damage as well as the lack of access to the product when it is undergoing repair, which results in stoppage the loss of user's time or a break in business activity;
2. Improper results of operation of the product or products related with it;
3. It applies to losses and damages according to any legal category, including negligence and other losses, termination of a contract, expressed or implied guarantee and strict liability (even if the manufacturer or the supplier was notified about the possibility of occurrence of such damages).

Safety measures:

Particular attention at designing was directed to quality standards of the device where ensuring safety of operation is the most important factor.

The device must be secured against contact with caustic, staining and viscous fluids.

The device was designed in such a way that it restarts operation when power supply is restored after a break.

Attention! We recommend using protections to further protect the device from possible overvoltages in installations. Surge protectors are effective protection against accidental pass to the device voltages higher than the rated. Damages caused by pass the voltages higher than specified in manual, are not under warranty.

Turn off the device before transporting it.

Prior to connecting the device to a power source check whether the supplied voltage is consistent with rated voltage specified in the user manual.

Proper product disposal:

A marking of a crossed out waste bin indicates that the product may not be disposed together with other household waste in the entire EU. To avoid possible damage to the natural environment of health due to uncontrolled waste disposal, therefore, it should be handed over for recycling, propagating in this way sustainable use of natural resources.

To return a worn-out product, use a collection and disposal system of this type of equipment or contact a seller from whom it was purchased. He will then be recycled in an environmentally-friendly way.

Very good digital hunting camera, perfect to monitoring animals eg. in the forest, and also to surveillance houses, summer cottages, stores, etc. Built-in InfraRed illuminator enables recording video data also at night. Even with IR illuminator on, the device is completely invisible to the human eye, due to use the IR LEDs with 940 nm wavelength. Due to above the illuminator is completely invisible to the human eye. Camera is triggering by PIR detector and based on its settings can take one image or a few images or records a video sequence.

Minimal power consumption ensures very long and continuous operation time on batteries, even up to 6 months.

Hunting camera is full hermetic and resistant to very different environment conditions. Warning! The hunting camera supports only SDHC cards and FAT32 file system.



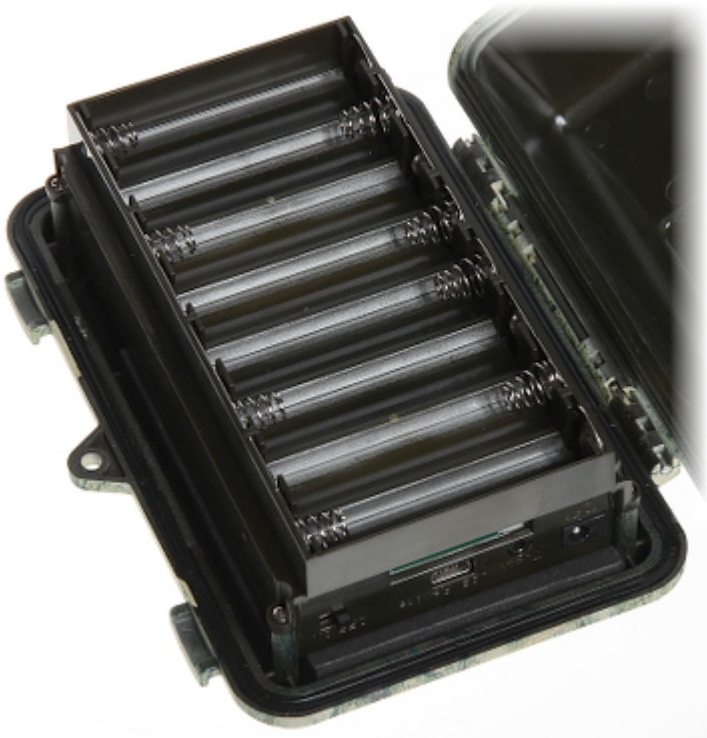
Sensor:	5 Mpx CMOS
View angle:	60 °
IR illuminator wavelength:	940 nm (invisible to the human eye)
Range of IR illumination:	10 m
Number of taking photos at once:	max. 3 still images
Built-in monitor:	—
Internal memory:	—
External memory:	max. 32 GB SD memory card (not included)
Still image resolution:	12 Mpx (4032x3024) 8 Mpx (3264x2448) 5 Mpx (2560 x 1920)
Video sequence resolution:	1280 x 720 (HD Ready) @ 25 fps 640 x 480 @ 20 fps
Video sequence duration time:	5 ... 60 s
Day/night mode:	ICR automatic filter
PIR detection range:	22 m
Detection angle:	50 °
PIR detector:	with adjustable sensitivity (3 levels)

Battery power supply:	4 / 8 AA (Batteries), DC 6V/12W power adapter (not included)
Stand-by power consumption:	400 μ A Battery supply is sufficient for approx. 8 months of operation in Standby mode
Operating power consumption:	< 150 mA (350mA with IR illuminator on) In still images capture mode, battery supply is sufficient for approx. 6000 images
Operation temp:	-20 °C ... 60 °C
Permissible relative humidity:	5 ... 90 % (non-condensing)
Main features:	<ul style="list-style-type: none"> • Low battery level alarm • Remote controller with monitor built-in - included
Weight:	0.23 kg
Dimensions:	140 x 103 x 67 mm
Supported languages:	English
Guarantee:	2 years

Device connectors:



Internal view (after open the enclosure):



Bottom view:



Mounting side view:



In the kit:



PACKAGE



User Manual

Code: HC-SG560
HUNTING CAMERA **HC-SG560**

Dimensions (L x W x H): 0x0x0 mm	Gross Weight: 0 kg
----------------------------------	--------------------