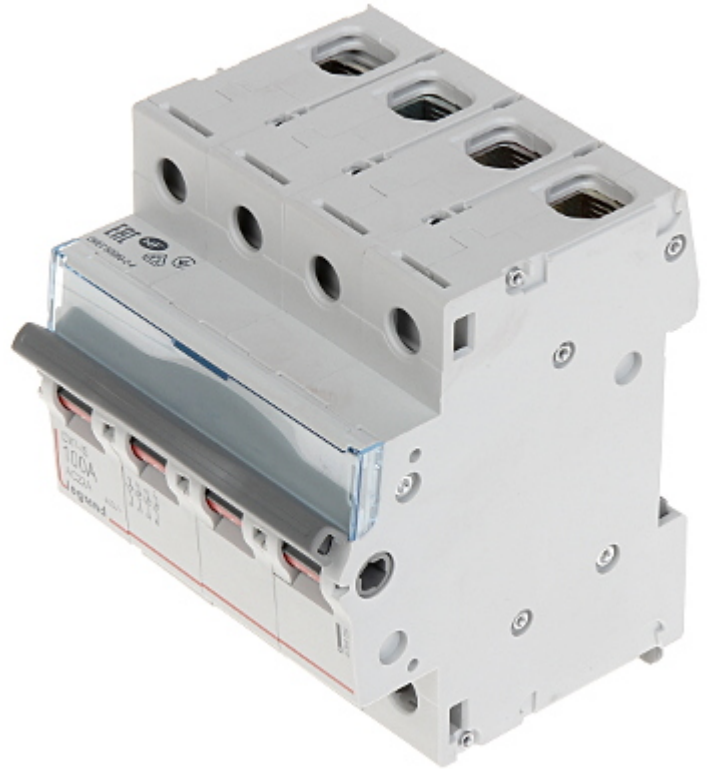


Code: LE-406489

## ISOLATING SWITCH **LE-406489** THREE-PHASE 100 A LEGRAND

Isolating switch ensuring the isolation of entire installation from the mains. The LE-406489 device is designed to mount on DIN TS-35 rail.



|                                     |   |
|-------------------------------------|---|
| Device type:                        | Isolating switch, Three-phase               |
| Rated current:                      | 100 A                                       |
| Rated voltage:                      | 500 V AC, 50/60 Hz                          |
| Rated short time withstand current: | 2500 A                                      |
| Rated impulse withstand voltage:    | 6 kV  |
| Number of poles:                    | 4   |
| Category of use:                    | AC22A                                       |
| Connectors type:                    | screw terminals                             |
| Main features:                      | Provided space for a label with description |
| Housing:                            | Plastic, DIN, TS-35 rail mounting           |
| Width in 17.5 mm modules:           | 4   |
| Weight:                             | 0.36 kg                                     |
| Dimensions:                         | 71 x 83 x 75 mm                             |
| Manufacturer / Brand:               | LEGRAND                                     |



# DATA SHEET

---

|            |         |
|------------|---------|
| Guarantee: | 2 years |
|------------|---------|