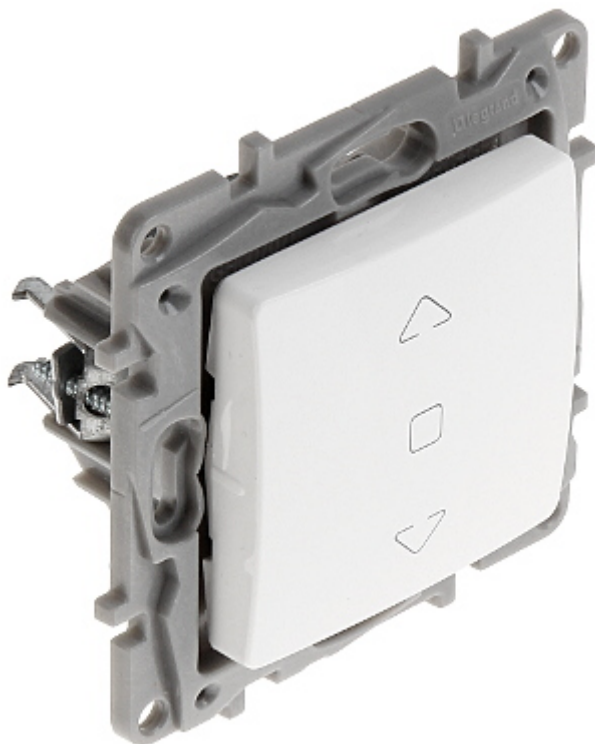


Code: LE-764512

ROLLER BLIND PUSH-BUTTON **LE-764512** Niloe 6 A LEGRAND



Device type:	Roller blind push-button
Rated voltage:	230 V AC, 50/60 Hz
Rated current:	6 A
Connectors type:	screw terminals
Application:	Niloe product series
Assembly:	Claw or screw mounting
Housing:	Plastic
Main features:	The switch allows to direct control of the roller blind motor
Color:	White
Weight:	0.058 kg
Dimensions:	76 x 76 x 40 mm
Manufacturer / Brand:	LEGRAND
Guarantee:	2 years