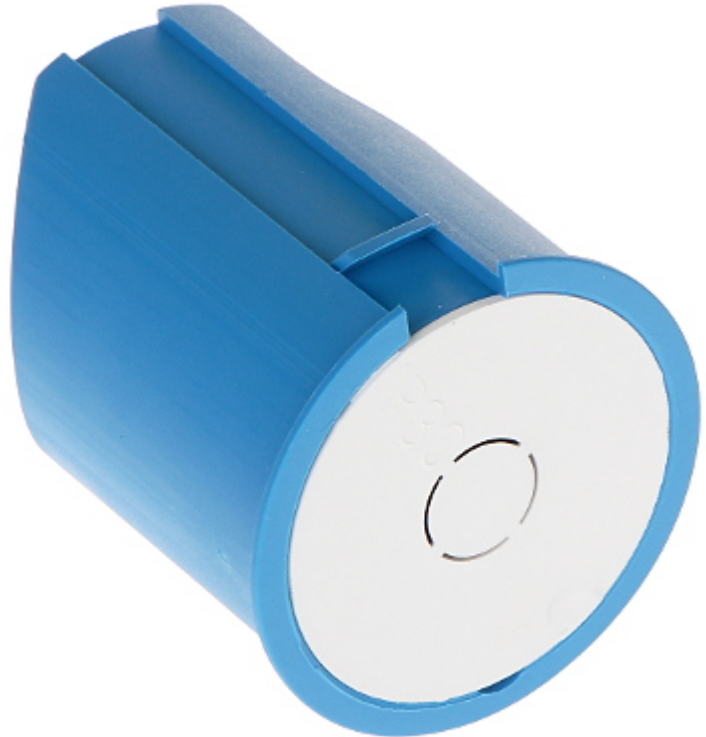


Code: P-32

FLUSH BOX **P-32** SIMET

Flush mounting box. The box is made from non-halogen, self-extinguishing plastic, intended for installation in hollow walls (plasterboard).



Number of sections:	1
"Index of Protection":	IP30
Main features:	<ul style="list-style-type: none"> • Flush, for wall lamps, for hollow walls • Class V0 • flammability index : 850 °C • 1 fixing point • 1 special screw with holder to fastening to the wall - included
Material:	halogen free and inflammable
Color:	Blue
Weight:	0.013 kg
Montage hole diameter:	32 mm
Dimensions:	Ø 35 x 45 mm
Manufacturer / Brand:	SIMET
Guarantee:	2 years