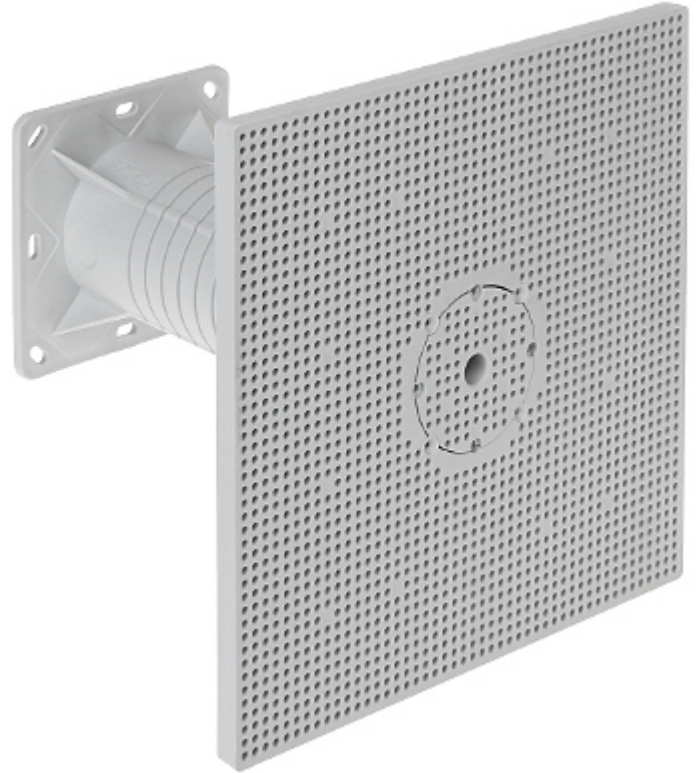


Code: MDZ-XL-KB

## MOUNTING PLATE TO THERMAL INSULATION **MDZ-XL-KB** KOPOS



Mounting plate with electrical installation box for installing electrical devices (eg outdoor lights, motion sensors, etc.) on thermally insulated buildings facades with a thickness from 50 to 200 mm. The robust construction. Elimination of thermal bridging. Before installing, it is necessary to cut the carrier including the enclosed insulation to the required length according to the thickness of the insulating layer.

Number of sections:	1
Voltage insulation:	~ 400 V
Main features:	<ul style="list-style-type: none"> <li>• for insulating systems</li> <li>• temperature range : -25 °C ... 60 °C</li> <li>• load 40 N - 180 mm from wall</li> <li>• flammability index : 850 °C</li> <li>• 4 fixing points (box)</li> <li>• Expansion plugs, Mounting screws, cover facing with a box - included</li> </ul>
Material:	Self-extinguishing
Color:	Light gray
Weight:	0.57 kg
Thickness of the insulating layer:	50 ... 200 mm
Mounting holes distance:	60 mm
Dimensions:	Ø 63 x 39 mm (box) 238 x 238 x 42 mm (mounting plate) 120 x 120 x 200 mm (carrier)
Manufacturer / Brand:	KOPOS





# DATA SHEET

Guarantee:

2 years