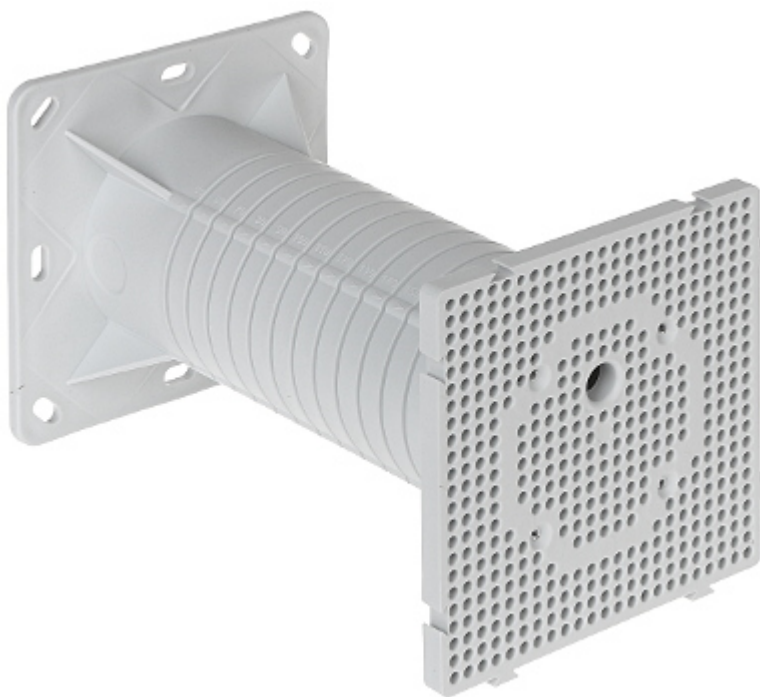


Code: MDZ-KB

## MOUNTING DESK INTO THERMAL INSULATION **MDZ-KB** KOPOS

Mounting desk for installing electrical devices (eg outdoor lights, motion sensors, etc.) on thermally insulated buildings facades with a thickness from 50 to 200 mm. The robust construction. Elimination of thermal bridging. Before installing, it is necessary to cut the carrier including the enclosed insulation to the required length according to the thickness of the insulating layer.



Number of sections:	1
Voltage insulation:	~ 400 V
Main features:	<ul style="list-style-type: none"> <li>• for insulating systems</li> <li>• temperature range : -25 °C ... 60 °C</li> <li>• load 40 N - 180 mm from wall</li> <li>• flammability index : 850 °C</li> <li>• Expansion plugs, Mounting screws - included</li> </ul>
Material:	Self-extinguishing
Color:	Light gray
Weight:	0.222 kg
Thickness of the insulating layer:	50 ... 200 mm
Dimensions:	119 x 119 x 20 mm (mounting desk) 120 x 120 x 200 mm (carrier)
Manufacturer / Brand:	KOPOS
Guarantee:	2 years