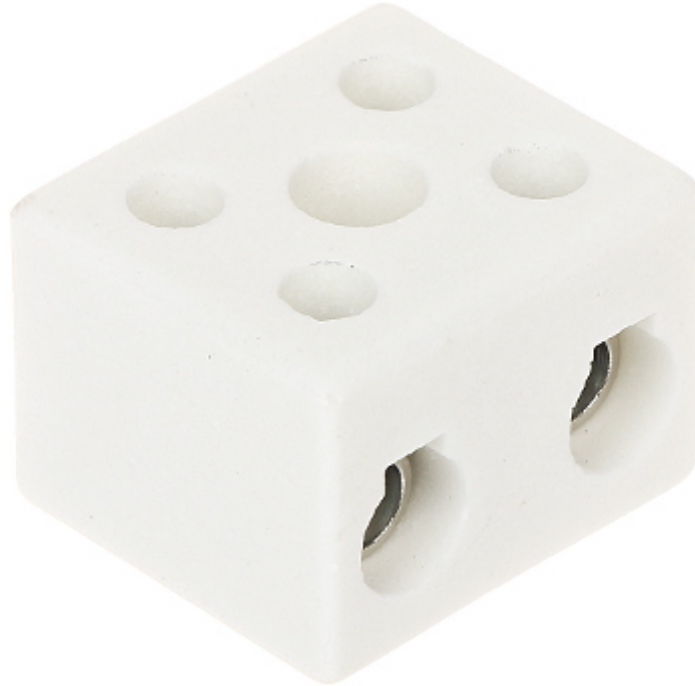


Code: KE-CPO-30A-2P

## CONNECTOR STRIP **KE-CPO-30A-2P** SIMET



Number of terminal pairs:	2
Connector type:	terminals
Nominal voltage:	450 V
Rated current:	76 A
Wire gauge:	16 mm <sup>2</sup>
Dielectric:	Porcelain
Color:	White
Dimensions:	22 x 27 x 31 mm
Manufacturer / Brand:	SIMET
Guarantee:	2 years